

ALUMINUM BODY

SIDE ROLL AND FRONTAL IMPACT PROTECTION

NOTE

DIMENSIONS SHOWN ARE APPROXIMATE AND ARE SUBJECT TO MINOR DEVIATIONS AS MAY OCCUR OR BE NECESSARY IN CONSTRUCTION. MINOR DETAILS NOT SHOWN.

- DUAL L.E.D. LIGHT STRIPS LOCATED IN HOSE BED
- ELASTIC PULL STRAP FOR DOOR ON ALL SIDE BODY COMPARTMENTS AND CROSSLAYS
- SIX FULL WIDTH/DEPTH ADJUSTABLE SHELVES - TWO IN COMPARTMENT RS3, ONE IN LS3 AND RS4
- FOUR FLOOR MOUNTED SLIDE-OUT TRAYS - ONE IN COMPARTMENTS LS1, RS1, RS4 AND B1
- TWO SWING-OUT ALUMINUM TOOL BOARDS - ONE IN COMPARTMENTS LS2 AND RS2
- ONE ALUMINUM SWING OUT TOOLBOARD IN COMPARTMENT RS2
- PAC TRAC ON THE REAR WALL OF COMPARTMENTS LS1, LS2 AND RS2
- XANTREX BATTERY CHARGER IN LEFT SIDE REAR FACING SEAT RISER
- KUSSMAUL AIR COMPRESSOR LOCATED UNDER LEFT SIDE REAR FACING SEAT RISER
- TWO FULL WIDTH ADJUSTABLE SHELVES WITH WELDED CORNERS IN COMPARTMENT LS1

- THREE ADJUSTABLE SLIDE-OUT TRAYS - ONE IN COMPARTMENTS LS3, RS1 AND B1
- ONE ADJUSTABLE TILTING SLIDE-OUT TRAY IN COMPARTMENT RS1
- SCBA RACK FOR 5 BOTTLES IN COMPARTMENT RS4

REV	DATE	BY	CH	ENFORCER
18JUN20	SHD	CHR	MAKE	
12MAY20	JRO	CHR	PIERCE	
23MAR20	JRO	WKL	MODEL	



MANUFACTURING INC.

TITLE 1500-D-1020P, 1000 GAL OF WATER W/ 20 GAL FOAM CELL 214" PUC RESCUE BODY, LADDERS THRU BODY, (2) X-LAYS

FOR MISSION FIRE DEPARTMENT MISSION, TEXAS

DWG NO.

34913AD

JOB NO. 34913

SCALE 1:24

DATE

DRAWN BY JRO

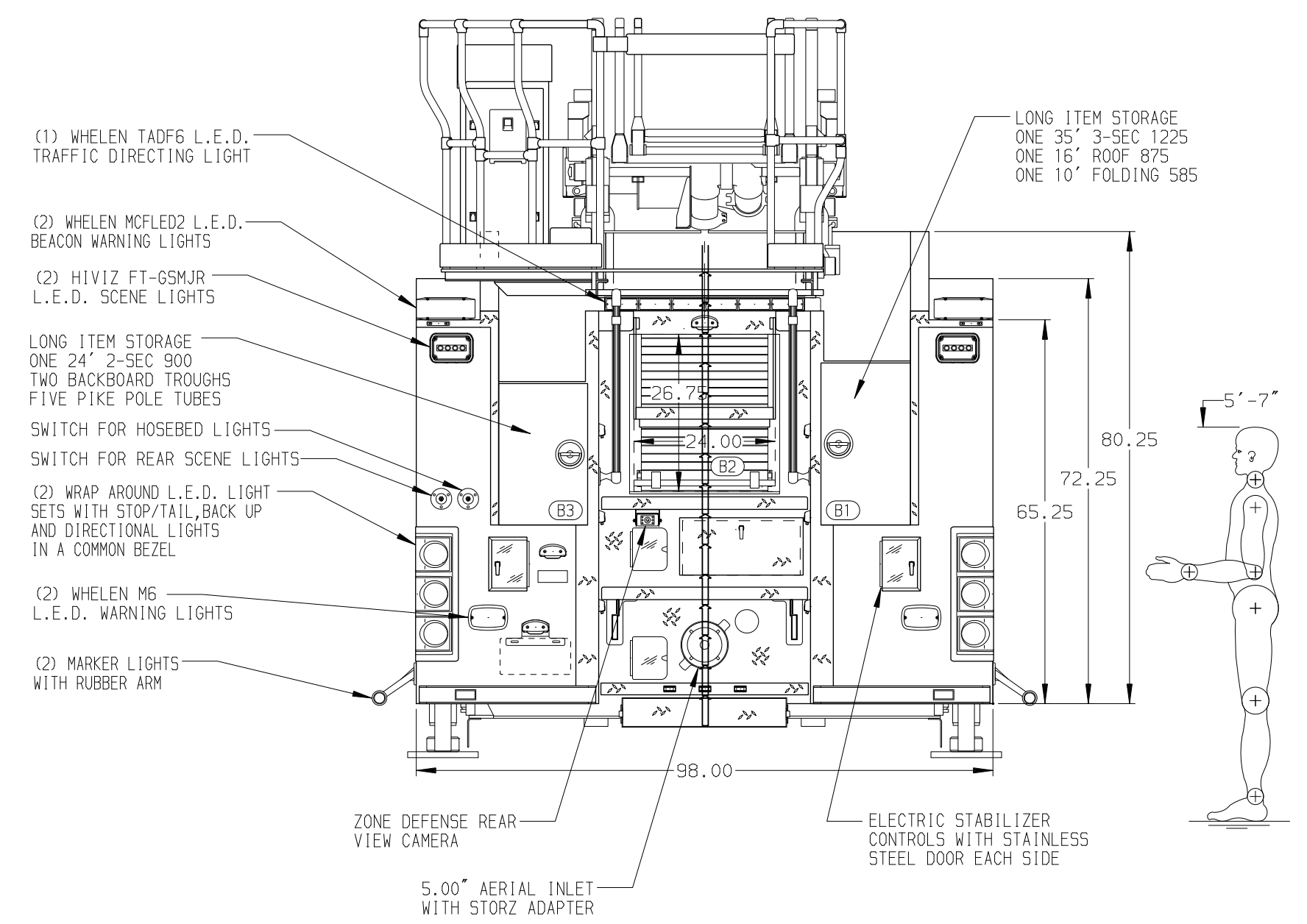
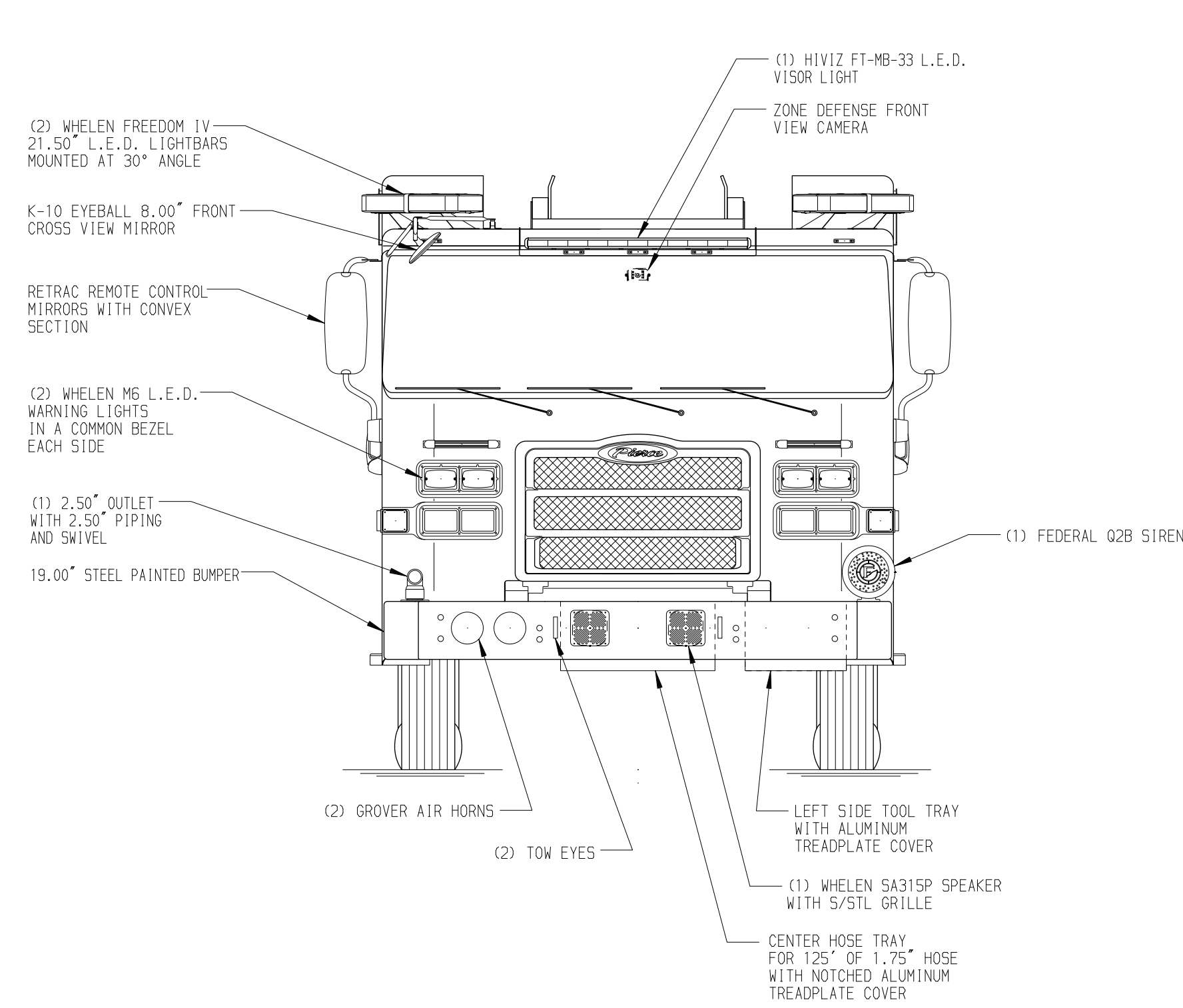
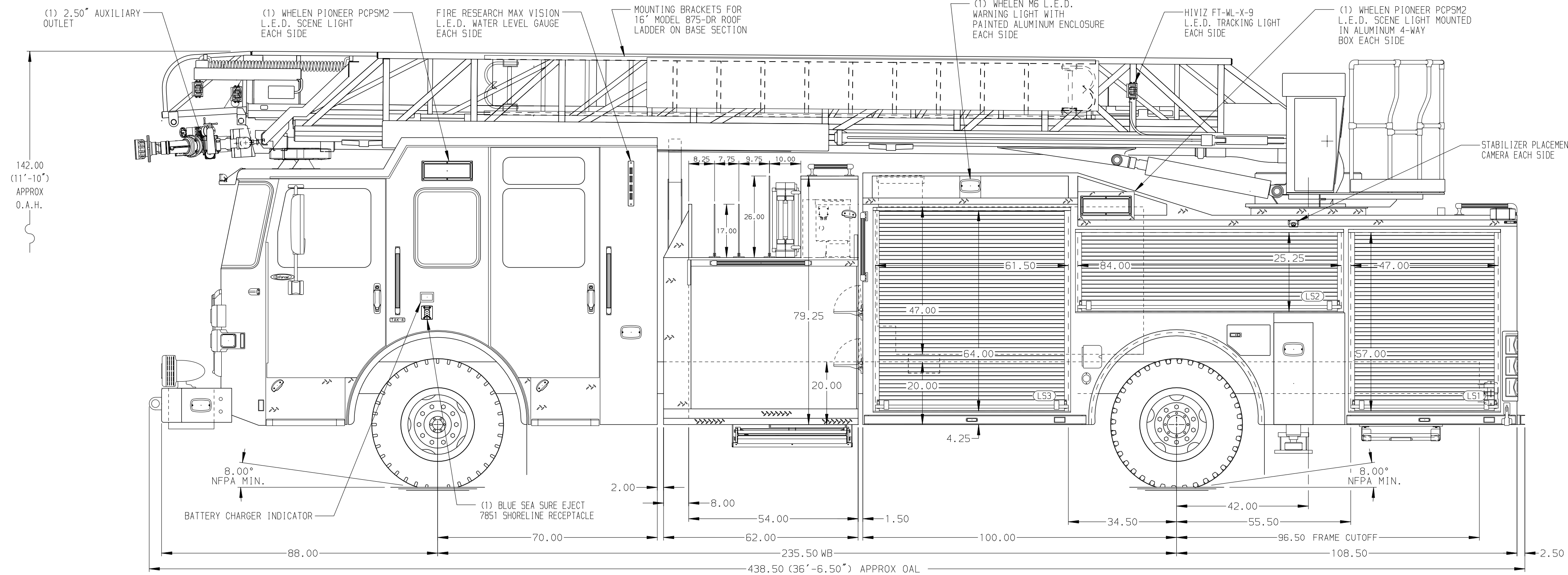
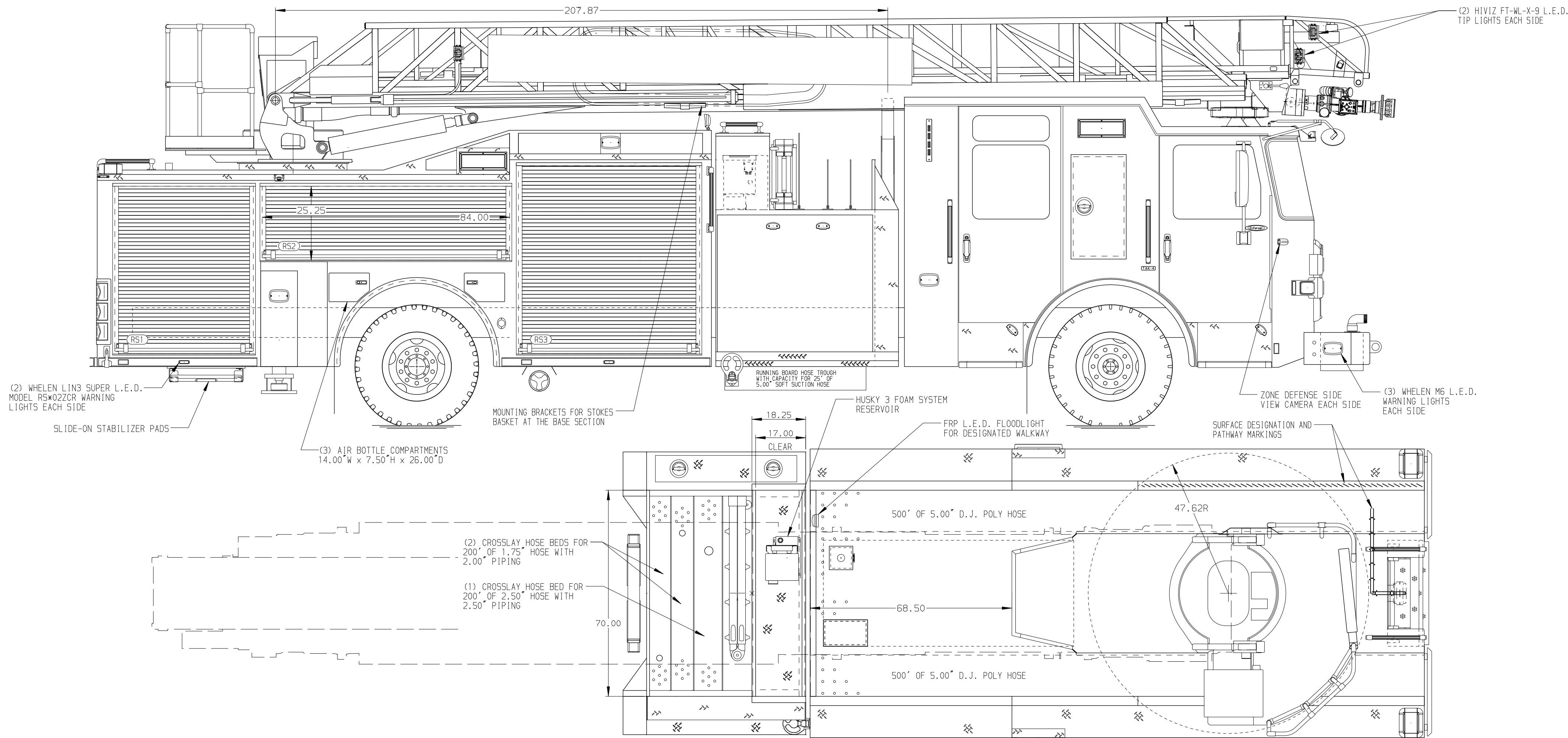
19MAR20

CHECKED BY WKL

19MAR20

SHEET SIZE D

SHEET NO. 1 OF 1



ALUMINUM BODY

SIDE ROLL AND FRONTAL IMPACT PROTECTION

NOTE
DIMENSIONS SHOWN ARE APPROXIMATE AND ARE SUBJECT TO MINOR DEVIATIONS AS MAY OCCUR OR BE NECESSARY IN CONSTRUCTION.
MINOR DETAILS NOT SHOWN.

- AIR INLET/OUTLET WITH DISCONNECT COUPLING LOCATED ON THE LEFT SIDE PUMP PANEL PER SHOP ORDER
- AIR COMPRESSOR LOCATED UNDER THE DRIVER'S SIDE REAR FACING SEAT RISER
- BATTERY CHARGER LOCATED IN THE CREW CAB REAR FACING SEAT RISER
- DUAL L.E.D. LIGHT STRIPS LOCATED IN HOSE BED
- SEVEN ADJUSTABLE SHELVES IN COMPARTMENTS PER SHOP ORDER
- ONE ADJUSTABLE SLIDE-OUT TRAY IN COMPARTMENT PER SHOP ORDER
- THREE FLOOR MOUNTED SLIDE-OUT TRAYS IN COMPARTMENTS PER SHOP ORDER
- TWO ALUMINUM SWING-OUT TOOLBOARDS IN COMPARTMENTS PER SHOP ORDER
- FOUR PAC TRAC ON BACK WALL OF COMPARTMENTS PER SHOP ORDER
- THREE VERTICAL PARTITIONS IN COMPARTMENTS PER SHOP ORDER
- ONE HOSE STORAGE RACK IN COMPARTMENT PER SHOP ORDER
- COLLISION AVOIDANCE CONTROL SYSTEM ON AERIAL DEVICE
- TRIDENT FOLDING STEPS ON AERIAL DEVICE
- LYEPULLEY RESCUE SYSTEM AT AERIAL TIP
- LIFTING EYE RESCUE ATTACHMENT AT AERIAL TIP
- 16.1.50" RAISED AERIAL PEDESTAL
- 1500 GPM HIGH FLOW WATERWAY
- 2-WAY INTERCOM SYSTEM BETWEEN AERIAL TIP AND TURNABLE
- NO LIMITED RETRACTION ON AERIAL DEVICE

				CHASSIS DATA
				MAKE
				PIERCE
				MODEL
				ENFORCER

		JOB NO.	34745
		SCALE	1:24
		DATE	
		DRAWN BY	SHU
		CHECKED BY	NDA
		SHEET SIZE	D
		SHEET NO.	1 OF 2

TITLE 75 AERIAL LADDER & BODY ASSEMBLY
520 GALLON TANK, 500 GAL WATER/20 GAL FOAM
FOR MISSION FIRE DEPARTMENT
MISSION, TEXAS
DWG NO. 34745AD-SH1