 TYPE 2



## Chevy CG33705

*155" Wheelbase  
9,900 GVW*

- › Duramax 6.6L Turbo Diesel (260hp @ 3100 rpm, 525 lb-ft torque @ 1600 rpm)
- › Locking rear differential G80 standard with YF2
- › Rear axle ratio of 3.54
- › Driver and passenger high-back bucket seats with adjustable head restraints and cloth trim
- › 6-speed heavy duty transmission
- › AM-FM Stereo with digital clock
- › Engine block Heater
- › Power windows and door locks
- › Tilt-wheel and cruise control
- › Ambulance Prep Package (YF2) Black rubberized vinyl floor covering (cab only), Chrome Appearance Package (chrome front and rear bumpers, and grille), Dual 145-amp alternators, Dual note horn, HVAC auxiliary provisions, High-idle switch



### STANDARD

- Raised fiberglass roof with full-screen ground plane with reinforcements at all warning light mounting locations
- Stainless steel protectors at critical wear points
- Seamless upholstery
- 3-point safety belt rear attendant seat
- Vertical 0<sup>2</sup> at rear of squad bench
- Bulkhead ALS cabinets with locking drug cabinet
- Roll cage constructed of 1 1/4" & 1 1/2" Schedule 40 structural tubing fully welded, with 6" gussets plates and longitudinal members



## Ford E350

138" Wheelbase  
9,500 GVW

- › 5.4L V8 Gasoline Engine
- › 255hp/350lb-ft of torque
- › 4-speed automatic overdrive transmission
- › 5,000lb.-capacity twin I-beam front axle
- › 6,084lb.-capacity rear axle
- › Ratio limited slip rear axle
- › 225 AMP alternator
- › Manual telescoping trailer mirror
- › Tilt wheel, cruise control
- › Chrome grille and front bumper

*Some features pictured may not be standard features. Please consult your Wheeled Coach sales representative for details.*



## FEATURES

- Exclusive EnterSafe™ roof design with front roof mounted intersection lights
- Rear high back captain's chair attendant seat with three-point seatbelt
- ALS layout patient compartment with radius cornered DuraLite™ dowel-constructed cabinets covered with Dove Gray mica
- (14) Halogen warning lights (optional LED and strobe)
- (5) Weldon 8046 patient compartment dome lights
- Limited Lifetime electrical warranty
- 64" interior headroom



Since its introduction in 1998, the Wheeled Coach Crusader PLUS™ has been the undisputed industry leading workhorse, performing with distinction in both small and large fleets. On the Chevrolet platform, the Crusader PLUS™ has been improved with a longer wheelbase chassis and spacious cab design, providing an additional 5" of patient compartment length and more comfort for the crew. The Ford offers a 5.4L V8 gasoline engine that is fuel efficient and easy to maintain.

The Crusader PLUS™ features Wheeled Coach's exclusive EnterSafe™ roof, a patented design that allows for the addition of two angled, roof-mounted warning lights, providing an extra visual warning that is important at intersections.

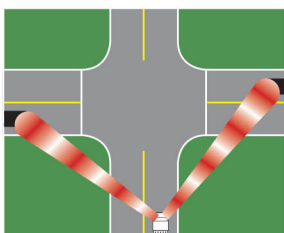
All of this and more, with the fastest delivery time in the industry.

***Demand More. Demand Wheeled Coach.***

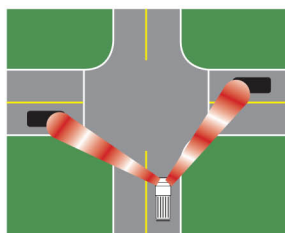
### ***Our Exclusive EnterSafe™ Lighting increases intersection safety***



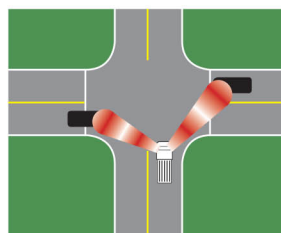
Because the lights are at a 45° angles, vehicles approaching an intersection on a "collision course" with an ambulance will always have the warning lights angled directly toward them, maximizing their effectiveness.



75 FEET FROM INTERSECTION



50 FEET FROM INTERSECTION



25 FEET FROM INTERSECTION



**Siddons-Martin  
Emergency Group**

1362 E Richey Rd  
Houston, TX 77073

Telephone: 800-784-6806

[www.Siddons-Martin.com](http://www.Siddons-Martin.com)

**Quality Management Systems  
rated ISO 9001:2008 Certified**



*Wheeled Coach's commitment to their customers has earned them the ISO 9001:2008 certification, signifying that Wheeled Coach has implemented an extensive quality control system of standards and management oversight to the manufacturing process of custom ambulances.*