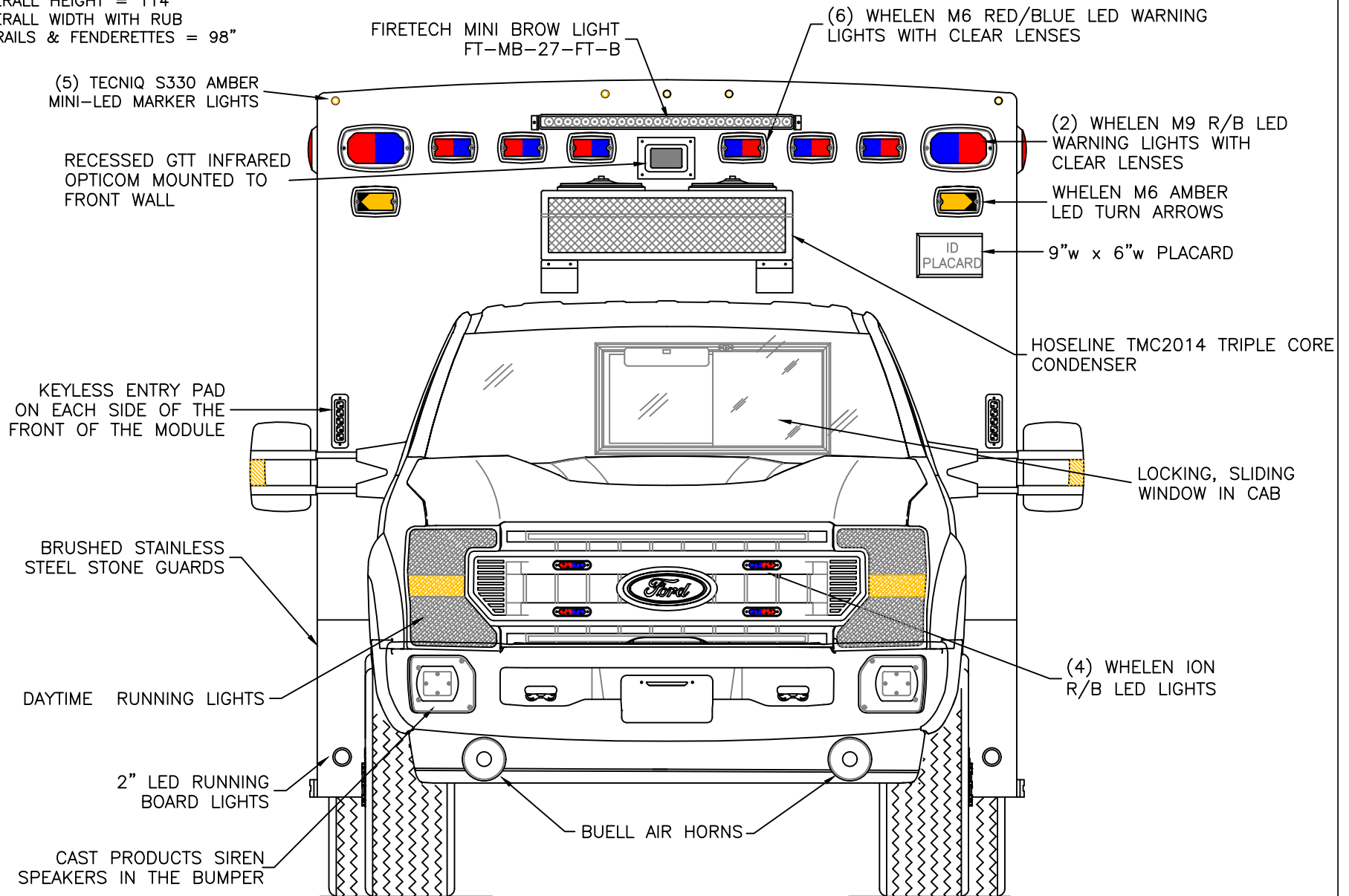


DIMENSIONS FOR OVERALL HEIGHT AND LENGTH ARE APPROXIMATE

OVERALL HEIGHT = 114"

OVERALL WIDTH WITH RUB

RAILS & FENDERETTES = 98"



THIS DRAWING IS FOR REPRESENTATIONAL PURPOSES ONLY. DETAILS ARE CONCEPTUAL AND ARE SUBJECT TO CHANGE DURING DESIGN AND CONSTRUCTION  
DIMENSIONS ARE APPROXIMATE UNLESS NOTED OTHERWISE TO MEET A SPECIFIC CUSTOMER NEED.

PLANO  
FIRE DEPT.



FRONT EXTERIOR VIEW  
CHIEF XL-1/F550 GAS CHASSIS

DATE: 12-12-22  
DWG. SER NR  
REV.

DRAWING NO.  
PLANO-1  
CPQ #7267

APPROVAL SIGNATURE:

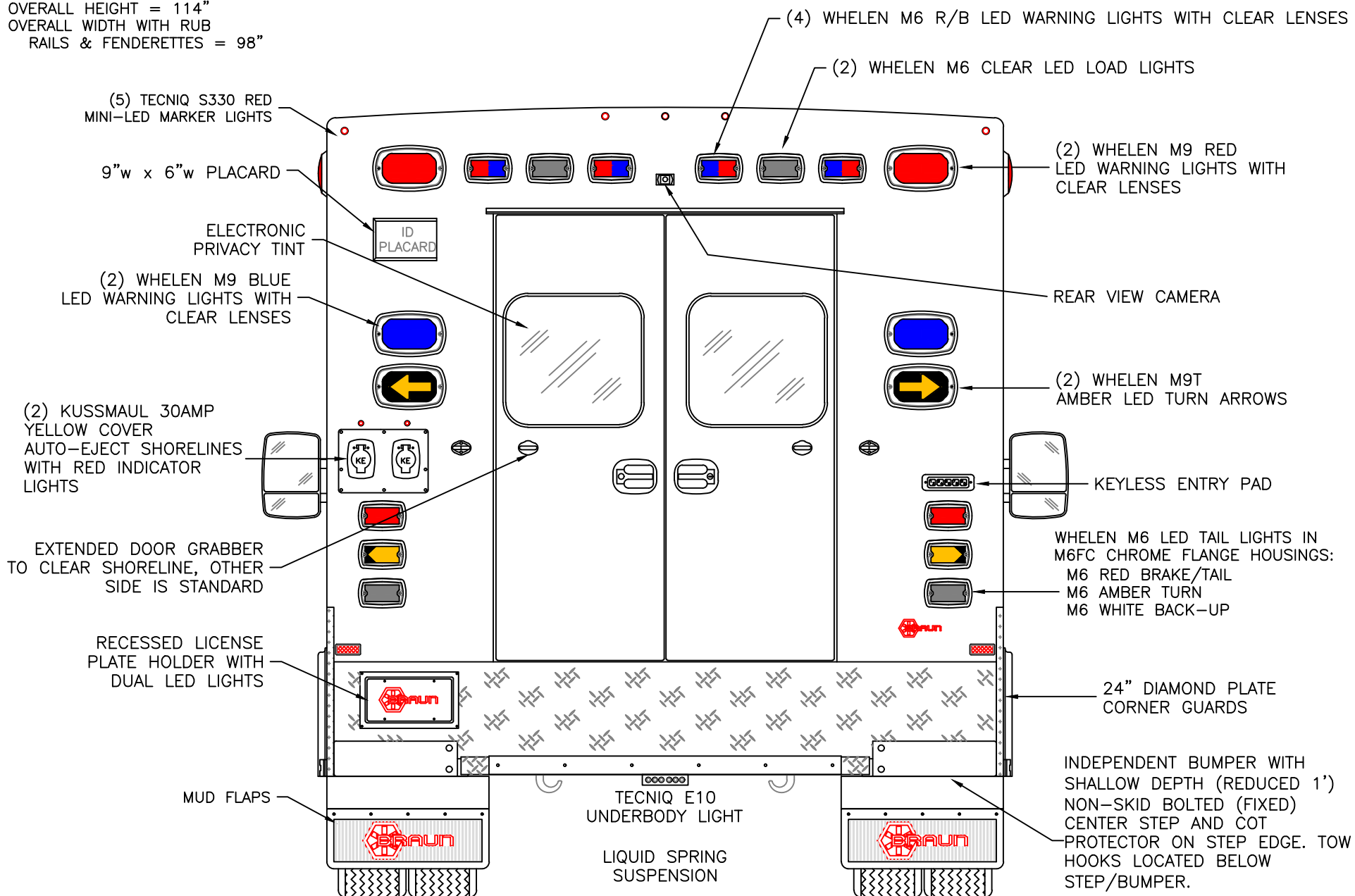
DATE:

DIMENSIONS FOR OVERALL HEIGHT AND LENGTH ARE APPROXIMATE

OVERALL HEIGHT = 114"

OVERALL WIDTH WITH RUB

RAILS & FENDERETTES = 98"



THIS DRAWING IS FOR REPRESENTATIONAL PURPOSES ONLY. DETAILS ARE CONCEPTUAL AND ARE SUBJECT TO CHANGE DURING DESIGN AND CONSTRUCTION  
DIMENSIONS ARE APPROXIMATE UNLESS NOTED OTHERWISE TO MEET A SPECIFIC CUSTOMER NEED.

PLANO  
FIRE DEPT.



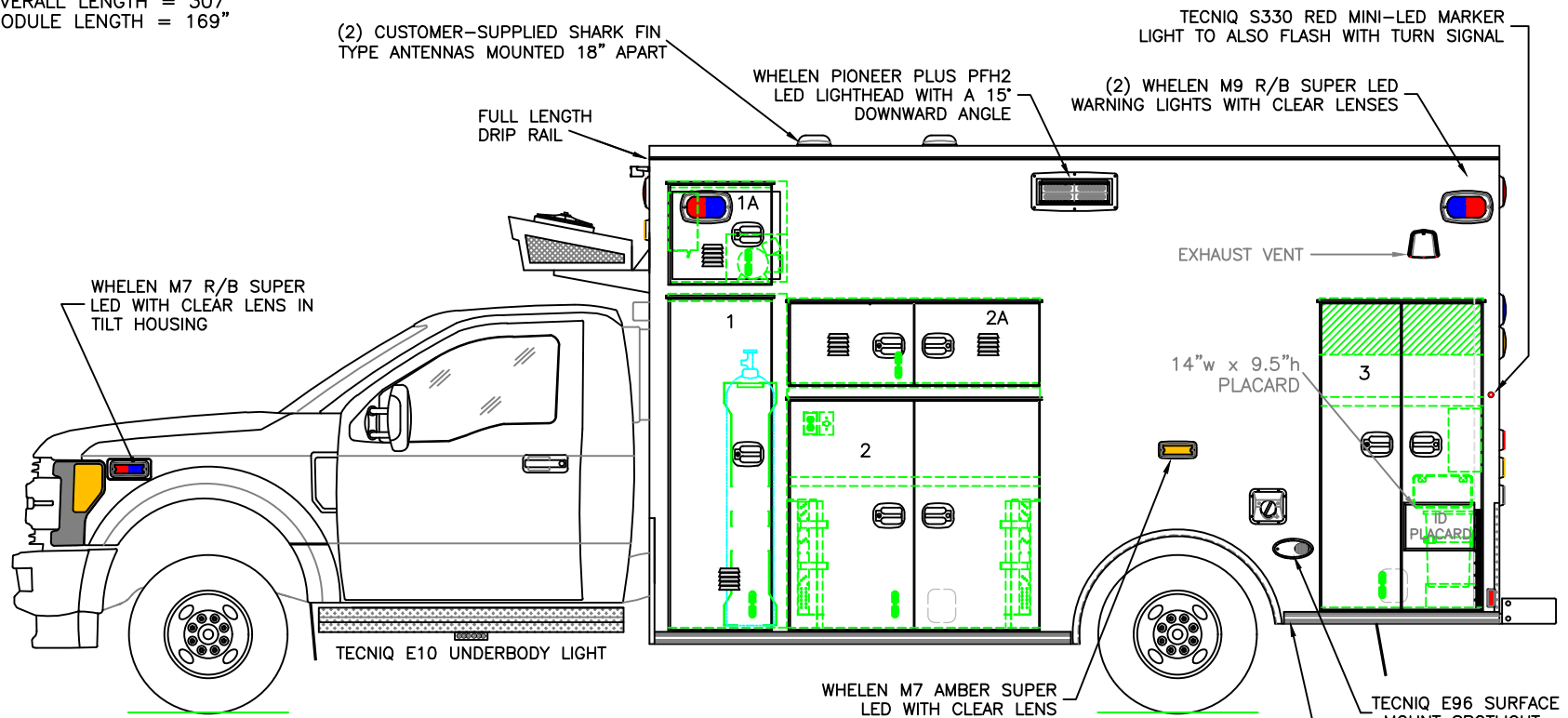
REAR EXTERIOR VIEW  
CHIEF XL-1/F550 GAS CHASSIS

1:16

DATE:  
12-12-22  
DWG. SER  
REV. NR

DRAWING NO.  
PLANO-2  
CPQ #7267

DIMENSIONS FOR OVERALL HEIGHT AND LENGTH ARE APPROXIMATE  
 OVERALL HEIGHT = 114"  
 OVERALL LENGTH = 307"  
 MODULE LENGTH = 169"



#### COMPARTMENT

##### O.S.S #1

CLEAR OPENING: 64.75h x 17.25w  
 INSIDE DIM'S.: 66.25h x 23.50w x 11.50d  
 ZICO QRMV BRACKET FOR OXYGEN STORAGE  
 TO BE AN OXYGEN BOTTLE TRANSFILL SYTEM  
 WITHIN THE COMPARTMENT

##### O.S.S #1A

CLEAR OPENING: 18.75h x 17.25w  
 INSIDE DIM'S.: 20.00h x 23.50w x 13.00d  
 ACCESS PLATE ON THE BACK WALL TO ACCESS  
 AC/HEAT UNIT, INVERTER AND AIR HORN COMPRESSOR  
 WILL NEED REMOVED TO GET TO ACCESS PANEL.  
 LOUVERED WITH FAN FOR VENTILATION

##### O.S.S #2

CLEAR OPENING: 44.25h x 44.00w  
 INSIDE DIM'S.: 47.75h x 50.00w x 20.75d  
 (1) ADJUSTABLE SHELF  
 ANGLED SCBA BRACKET IN EACH REAR CORNER  
 6" ABOVE FLOOR  
 125VAC AND 12VDC OUTLETS ON BACK WALL  
 STREAMLIGHT PRE-WIRE; LEFT/RIGHT WALLS ABOVE SHELF

##### O.S.S #2A

CLEAR OPENING: 15.25h x 44.00w  
 INSIDE DIM'S.: 16.75h x 50.00w x 8.00d  
 1" DEAD SPACE ON BACK WALL  
 PDQ/RADIO EQUIPMENT COMPARTMENT  
 AND HEAT/AC CONTROLLER WITHIN

##### O.S.S #3

CLEAR OPENING: 59.75h x 26.50w  
 INSIDE DIM'S.: 61.50h x 32.50w x 20.75d  
 AEROCLAVE HOSE ON UPPER REAR WALL  
 (1) ADJUSTABLE SHELF  
 10 GALLON WASTE CONTAINER WITH STRAP ON REAR WALL  
 THE REAR WALL TO HE BUILT OUT IN AREA OF WASTE  
 AND WASTE TO BE RAISED TO OPENING  
 AIR HORN COMPRESSOR AND INVERTER WITHIN WITH COVERS

OSS DOORS TO HAVE HURRICANE STRAPS

RED WHELEN ION LIGHTS  
 ON LOWER INTERIOR REAR FACING DOORS

THIS DRAWING IS FOR REPRESENTATIONAL PURPOSES ONLY. DETAILS ARE CONCEPTUAL AND ARE SUBJECT TO CHANGE DURING DESIGN AND CONSTRUCTION  
 DIMENSIONS ARE APPROXIMATE UNLESS NOTED OTHERWISE TO MEET A SPECIFIC CUSTOMER NEED.

PLANO  
FIRE DEPT.



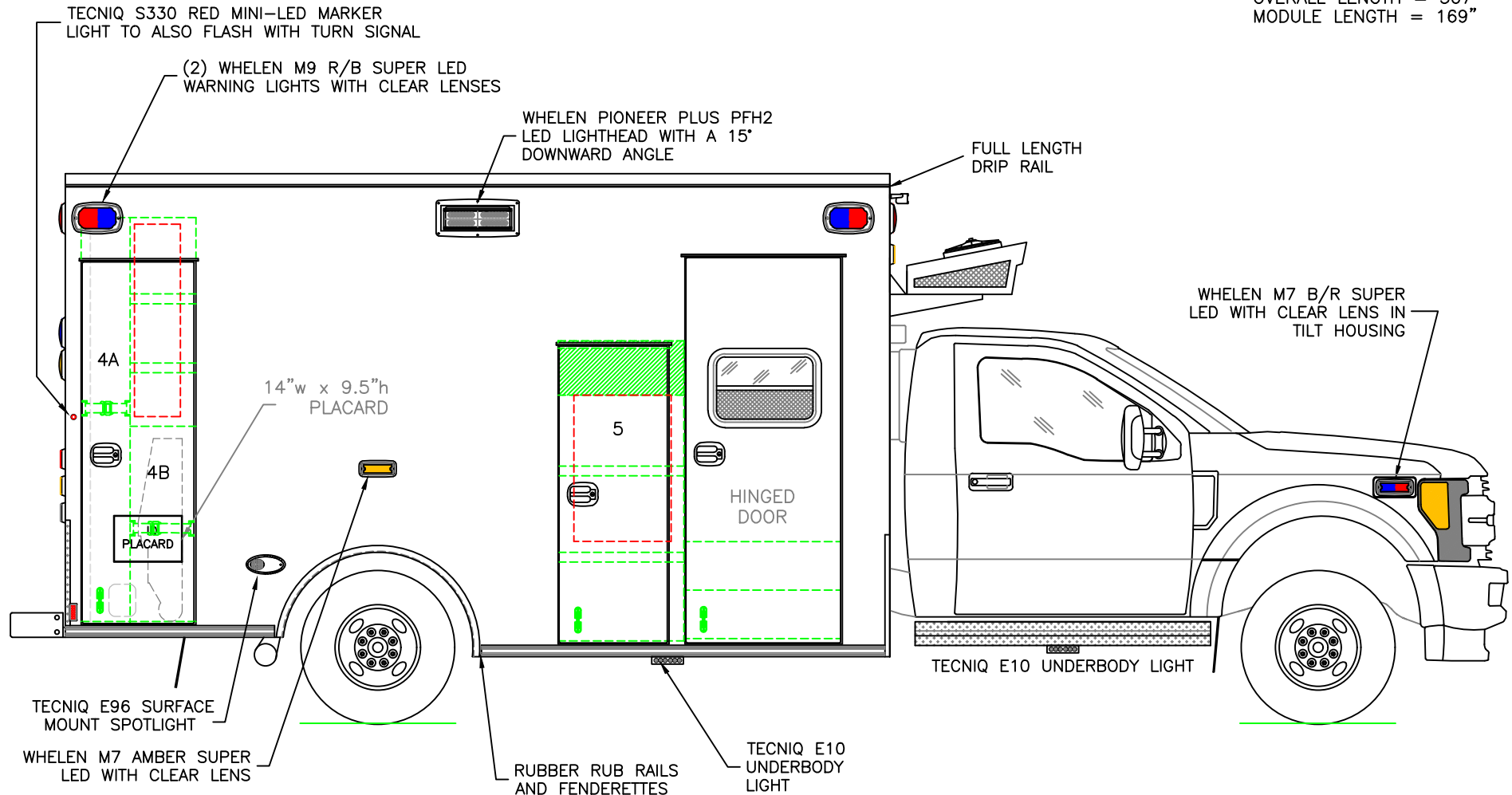
STREETSIDE EXTERIOR VIEW  
 CHIEF XL-I/F550 GAS CHASSIS

1:30

DATE:	12-12-22
DWG.	SER
REV.	NR

DRAWING NO.  
 PLANO-3  
 CPQ #7267

DIMENSIONS FOR OVERALL HEIGHT AND LENGTH ARE APPROXIMATE  
 OVERALL HEIGHT = 114"  
 OVERALL LENGTH = 307"  
 MODULE LENGTH = 169"



COMPARTMENT  
O.S.S #4

CLEAR OPENING: 73.00h x 19.75w  
 INSIDE DIM'S. 4A: 82.75h x 10.00w x 20.75d  
 BACKBOARD/SCOOP STORAGE WITH STRAP  
 ATTACHED TO BACK PART OF FRONT/REAR WALLS  
 INSIDE DIM'S. 4B: 82.75h x 13.50w x 20.75d  
 LOWER 40" FOR STAIR CHAIR STORAGE WITH STRAP  
 (2) ADJUSTABLE SHELVES  
 UPPER SECTION IS INSIDE/OUTSIDE ACCESS

O.S.S #5

CLEAR OPENING: 60.00h x 19.00w  
 INSIDE DIM'S.: 61.50h x 25.75w x 20.75d  
 INSIDE/OUTSIDE STORAGE WITH (2) ADJ. SHELVES

OSS DOORS TO HAVE HURRICANE STRAPS

RED WHELEN ION LIGHTS  
 ON LOWER INTERIOR REAR FACING DOORS

THIS DRAWING IS FOR REPRESENTATIONAL PURPOSES ONLY. DETAILS ARE CONCEPTUAL AND ARE SUBJECT TO CHANGE DURING DESIGN AND CONSTRUCTION  
 DIMENSIONS ARE APPROXIMATE UNLESS NOTED OTHERWISE TO MEET A SPECIFIC CUSTOMER NEED.

PLANO  
FIRE DEPT.



CURBSIDE EXTERIOR VIEW  
 CHIEF XL-1/F550 GAS CHASSIS

1:30

DATE:	12-12-22
DWG.	REV.
SER	NR

DRAWING NO.
PLANO-4
CPQ #7267

BOUND TREE 298507SA  
SHARPS WITH 298518  
LOCKING BRACKET

HOSELINE 454 WITH UV PURIFICATION  
110/12V HEAT/AC SYSTEM ANGLED  
APPROXIMATELY 45 to 55 DEGREES FROM  
FRONT WALL TO STREET SIDE WALL

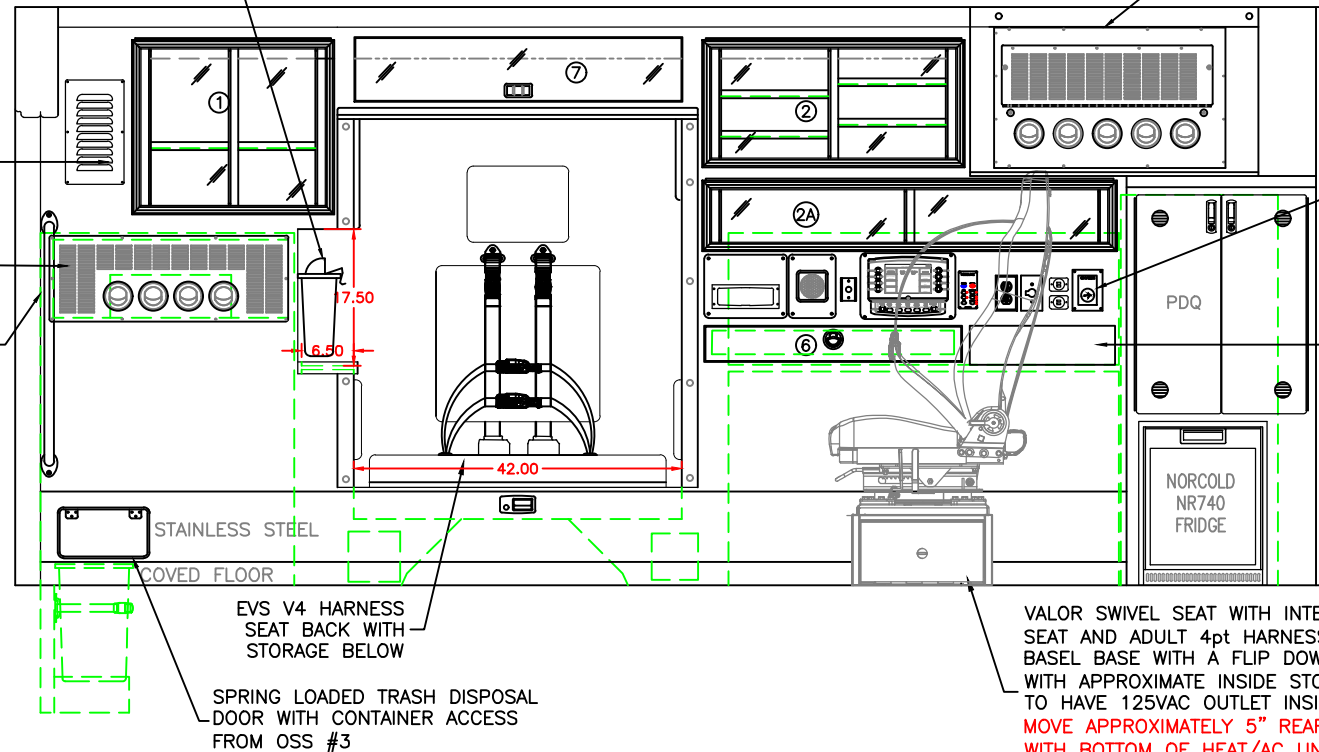
EXHAUST  
VENT

HOSELINE 9-6050  
12V AC UNIT

30" YELLOW STAINLESS  
STEEL ANTI-MICROBIAL  
ASSIST HANDLE

ACTION AREA WITH THE FOLLOWING:  
RADIO CUT-OUT,  
RADIO SPEAKER ON REMOVABLE PANEL,  
TEMP SENSOR, VISTA CONTROL SCREEN  
ON REMOVABLE PANEL, HOSELINE  
THERMOSTAT, 125VAC OUTLET, 12VDC  
OUTLET, (2) DUAL USB PORTS AND OXYGEN  
BYPASS VALVE,

OPEN STORAGE SLOT  
(NOT CN10 COMPLIANT)



VALOR SWIVEL SEAT WITH INTEGRAL CHILD SAFETY  
SEAT AND ADULT 4pt HARNESS, MOUNTED ON A 9"BOX  
BASEL BASE WITH A FLIP DOWN DOOR ON THE AISLE SIDE  
WITH APPROXIMATE INSIDE STORAGE OF 18"w x 18"h x 8h.  
TO HAVE 125VAC OUTLET INSIDE. **NOTE: SEAT AND BASE  
MOVE APPROXIMATELY 5" REARWARD TO AVOID INTERFERENCE  
WITH BOTTOM OF HEAT/AC UNIT. WILL NOT HAVE FULL TRAVEL**

#### COMPARTMENT

#1 DOOR OPENING: 20.00h x 21.50w  
INSIDE DIMS: 22.25h x 23.25w x 17.25d  
(1) ADJUSTABLE SHELF  
SLIDING POLYCARBONATE DOORS  
TOTAL CABINET WEIGHT RATING = 25 lbs.

#2 DOOR OPENING: 14.00h x 31.25w  
INSIDE DIMS: 16.25h x 33.50w x 17.25d  
(2) ADJ SHELF EACH SIDE OF CENTER DIVIDER  
SLIDING POLYCARBONATE DOORS  
TOTAL CABINET WEIGHT RATING = 25 lbs.

#2A DOOR OPENING: 6.75h x 50.75w  
INSIDE DIMS: 9.00h x 52.50w x 7.75d  
SLIDING POLYCARBONATE DOORS  
TOTAL CABINET WEIGHT RATING = 25 lbs.

#3, #4, AND #5 REMOVED FROM LAYOUT

#6 PULL-OUT DRAWER  
INSIDE DIMS: 3.00h x 31.00w x 11.00d  
LOCKING STAINLESS STEEL FLUSH PULL LATCHES  
TO HAVE SLIDES ON SIDE AND BOTTOM  
TOTAL DRAWER WEIGHT RATING = 10 lbs.

#7 DOOR OPENING: 8.25h x 42.00w  
INSIDE DIMS: 8.25h x 42.00w x 17.25d  
HINGED POLYCARBONATE DOOR  
CENTER SQUEEZE LATCH  
TOTAL CABINET WEIGHT RATING = 10 lbs.

CABINETS #1, #2, AND #2A TO  
HAVE RESTOCKING FRAMES

CABINETS TO BE ALUMINUM

THIS DRAWING IS FOR REPRESENTATIONAL PURPOSES ONLY. DETAILS ARE CONCEPTUAL AND ARE SUBJECT TO CHANGE DURING DESIGN AND CONSTRUCTION  
DIMENSIONS ARE APPROXIMATE UNLESS NOTED OTHERWISE TO MEET A SPECIFIC CUSTOMER NEED.

PLANO  
FIRE DEPT.

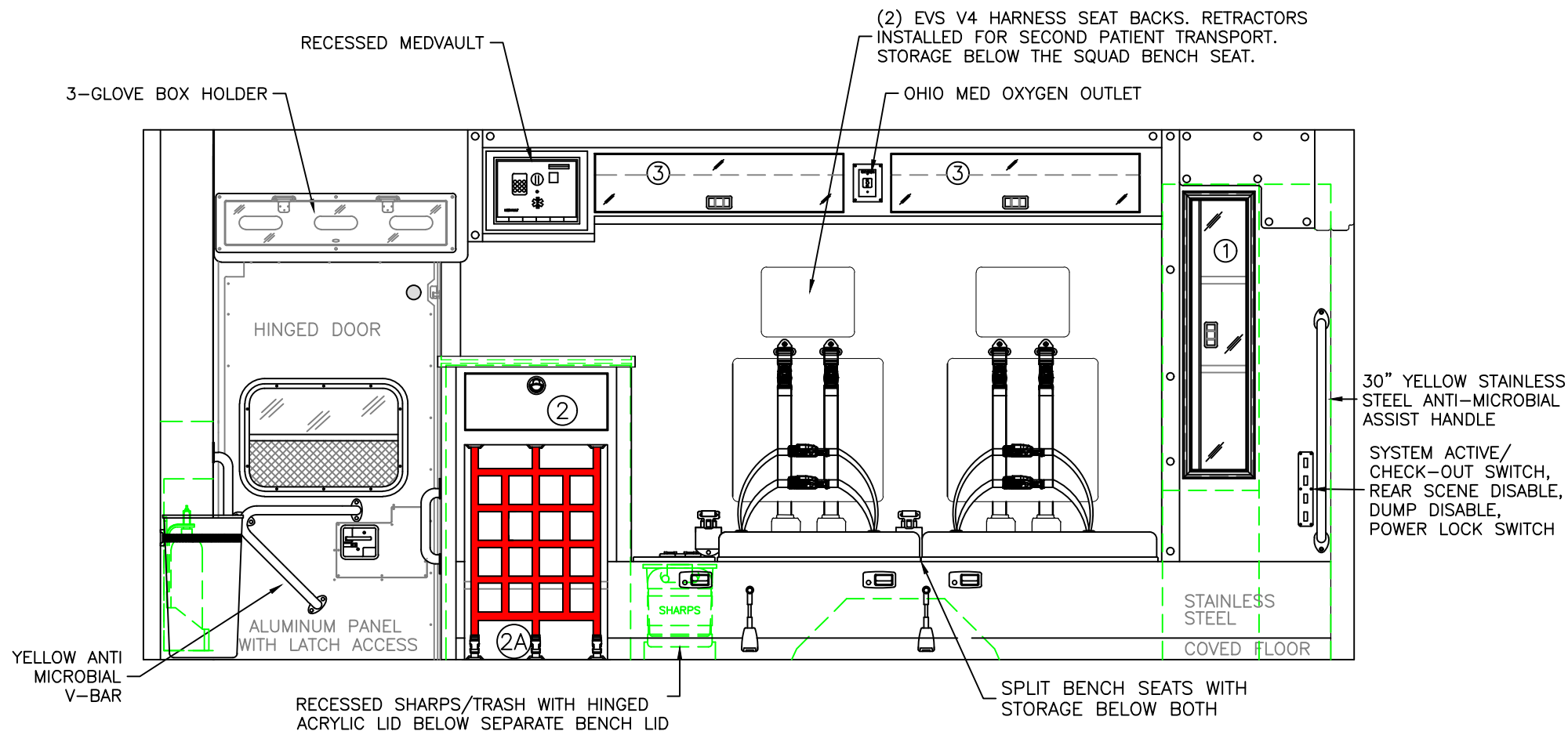


STREETSIDE INTERIOR VIEW  
CHIEF XL-I

1:22

DATE:  
12-12-22  
DWG. REV.  
SER NR

DRAWING NO.  
PLANO-5  
CPQ #7267



#### COMPARTMENT

#1 DOOR OPENING: 37.75h x 7.25w

INSIDE DIMS: OSS 4B

HINGED POLYCARBONATE DOOR WITH FULL LENGTH HANDLE AND CENTER SQUEEZE LATCH

TOTAL CABINET WEIGHT RATING = 25 lbs.

#2 CABINET WITH SOLID ACRYLIC COUNTERTOP

PULL-OUT DRAWER TOWARDS AISLE

INSIDE DIMS: 7.00h x 18.00w x 16.00d

LOCKING STAINLESS STEEL FLUSH PULL LATCH TO HAVE BOTH SIDE/BOTTOM SLIDES

TOTAL DRAWER WEIGHT RATING = 10 lbs.

#2A DOOR OPENINGS: 30.00h x 20.00w

INSIDE DIMS: OSS #5

INSIDE/OUTSIDE ACCESS

CARGO NET TO COVER OPENING

125VAC/12VDC OUTLETS ON UPPER REAR WALL

CABINET DOES NOT COMPLY WITH CN10

#3 DOOR OPENINGS: 8.25h x 34.75w

INSIDE DIMS: 8.25h x 34.75w x 10.25d

HINGED POLY DOORS WITH HOLD-OPENS

CENTER SQUEEZE LATCHES

43" MINIMUM HEADROOM BELOW THE CABINET

TOTAL CABINET WEIGHT RATING = 10 lbs. EACH

CABINETS TO BE ALUMINUM

THIS DRAWING IS FOR REPRESENTATIONAL PURPOSES ONLY. DETAILS ARE CONCEPTUAL AND ARE SUBJECT TO CHANGE DURING DESIGN AND CONSTRUCTION  
DIMENSIONS ARE APPROXIMATE UNLESS NOTED OTHERWISE TO MEET A SPECIFIC CUSTOMER NEED.

PLANO  
FIRE DEPT.



CURBSIDE INTERIOR VIEW  
CHIEF XL-I

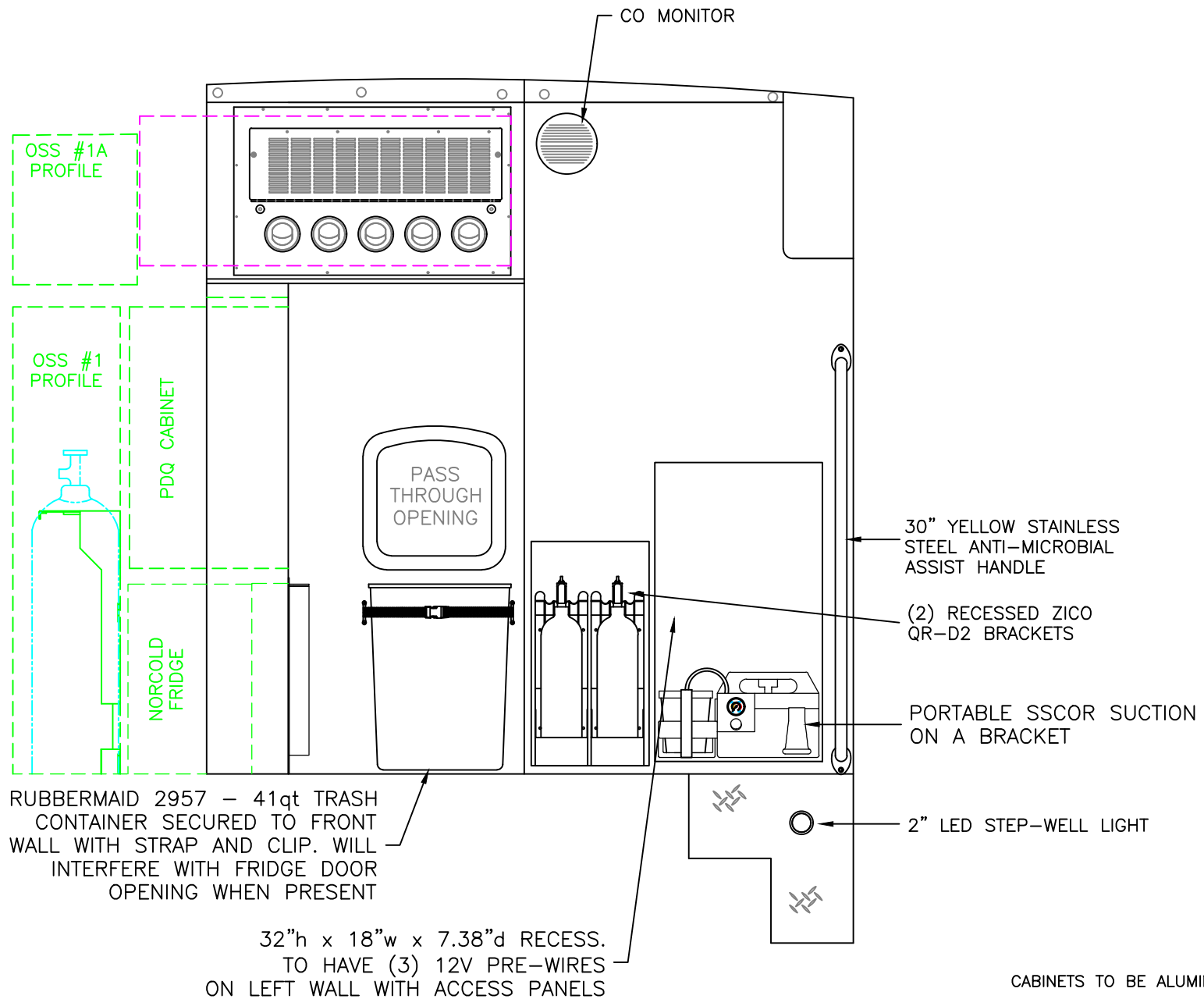
1:20

DATE:  
12-12-22  
DWG:  
SER

REV.  
NR

DRAWING NO.  
PLANO-6  
CPQ #7267





THIS DRAWING IS FOR REPRESENTATIONAL PURPOSES ONLY. DETAILS ARE CONCEPTUAL AND ARE SUBJECT TO CHANGE DURING DESIGN AND CONSTRUCTION  
DIMENSIONS ARE APPROXIMATE UNLESS NOTED OTHERWISE TO MEET A SPECIFIC CUSTOMER NEED.

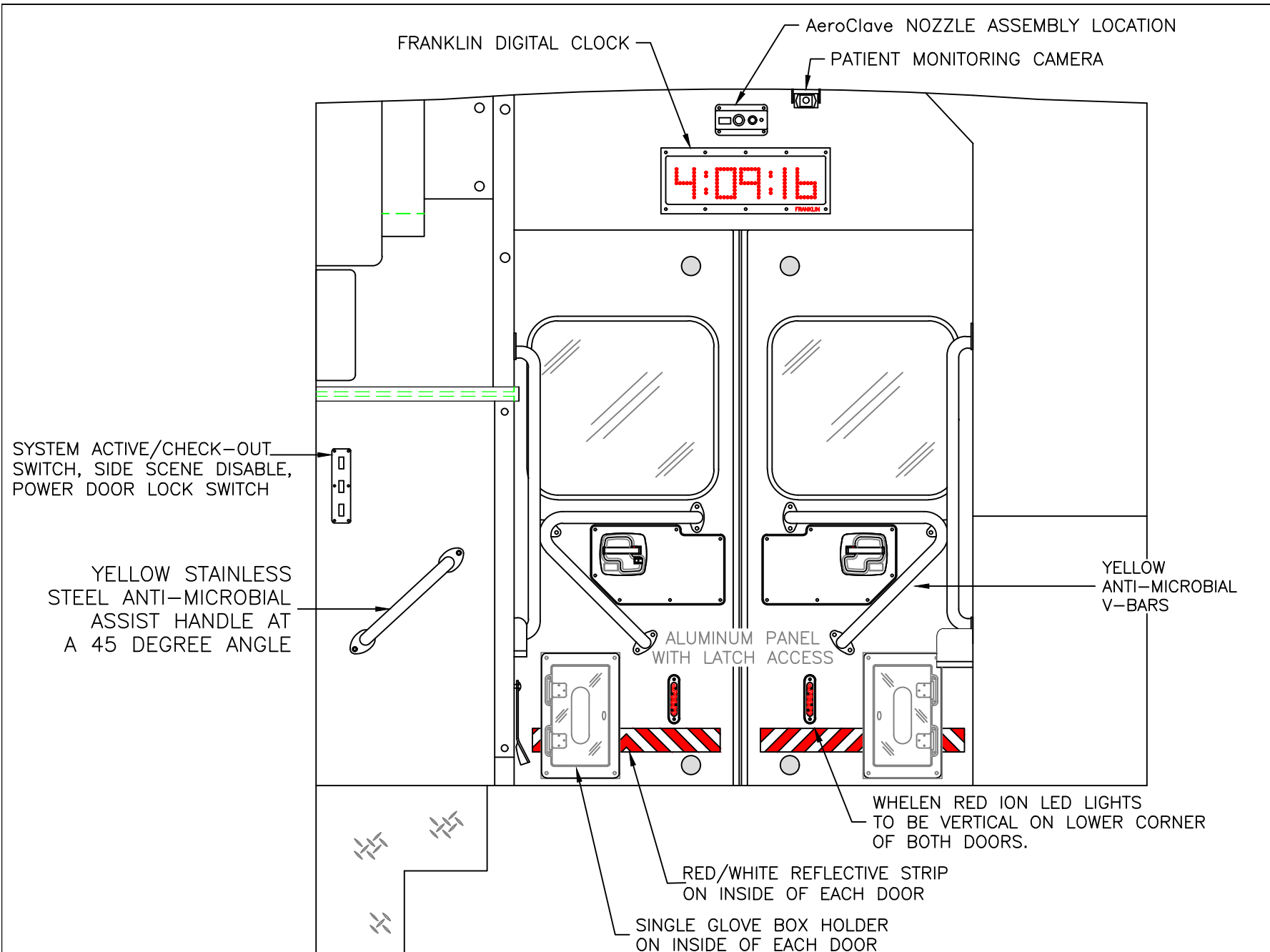
PLANO  
FIRE DEPT.



PARTITION INTERIOR VIEW  
CHIEF XL-I

DATE: 12-12-22	
DWG. SER	REV. NR

DRAWING NO. PLANO-7
CPQ #7267



THIS DRAWING IS FOR REPRESENTATIONAL PURPOSES ONLY. DETAILS ARE CONCEPTUAL AND ARE SUBJECT TO CHANGE DURING DESIGN AND CONSTRUCTION DIMENSIONS ARE APPROXIMATE UNLESS NOTED OTHERWISE TO MEET A SPECIFIC CUSTOMER NEED.

PLANO  
FIRE DEPT.



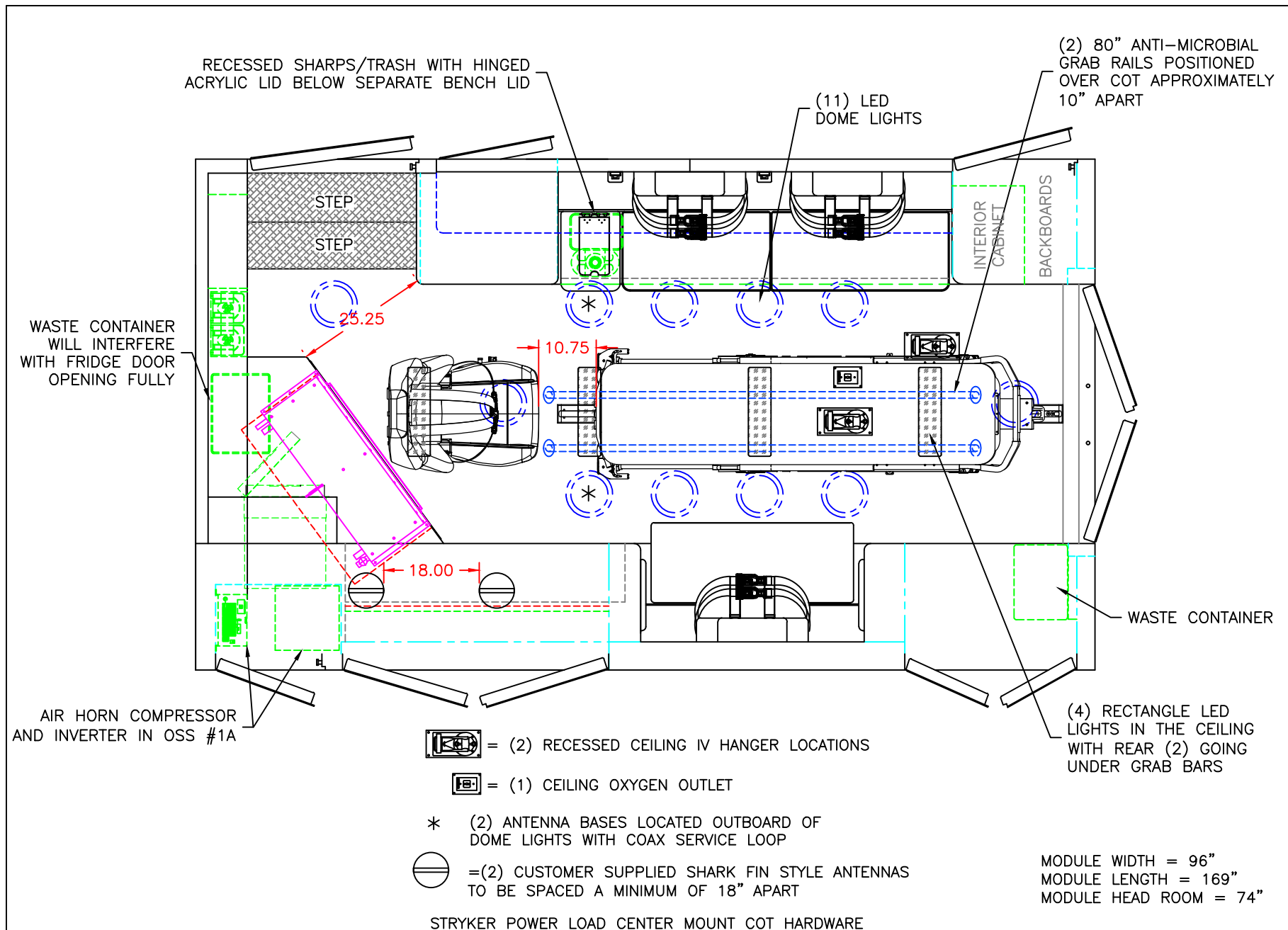
REAR INTERIOR VIEW  
CHIEF XL-I

1:12

DATE:  
12-12-22  
DWG. SER  
REV. NR

DRAWING NO.  
PLANO-8  
CPQ #7267





THIS DRAWING IS FOR REPRESENTATIONAL PURPOSES ONLY. DETAILS ARE CONCEPTUAL AND ARE SUBJECT TO CHANGE DURING DESIGN AND CONSTRUCTION DIMENSIONS ARE APPROXIMATE UNLESS NOTED OTHERWISE TO MEET A SPECIFIC CUSTOMER NEED.

PLANO  
FIRE DEPT.



FLOOR INTERIOR VIEW  
CHIEF XL-I

DATE:	12-12-22
DWG.	REV.
SER	NR

DRAWING NO.
PLANO-9
CPQ #7267