

DIMENSIONS FOR OVERALL HEIGHT AND LENGTH ARE APPROXIMATE  
 OVERALL HEIGHT = 112"  
 OVERALL WIDTH WITH RUB  
 RAILS & FENDERETTES = 98"

(6) WHELEN M6 SUPER LED WITH CLEAR LENSES, IN STAGGERED PATTERN:  
 (2) UPPER LIGHTS = WHITE LED; (4) LOWER LIGHTS = RED LED

(5) TECNIQ S330 AMBER  
 MINI-LED MARKER LIGHTS

ProAir 206 DUAL COIL/SINGLE  
 SINGLE PORT AC CONDENSER  
 ON MODULE FACE, WITH A  
 ProAir 108 AC CONDENSER.  
 BOTH CONDENSERS ARE  
 PACKAGED IN ONE ENCLOSURE,  
 CENTERED ON MODULE FACE.  
 CHASSIS TO HAVE SECOND  
 ENGINE DRIVEN AC COMPRESSOR.

LOCKING, SLIDING  
 WINDOW IN CAB

OEM POWER  
 ADJUSTABLE  
 MIRRORS

FLASHING HEADLIGHTS W/  
 DAYTIME RUNNING LIGHTS

MINI-LED RUNNING  
 BOARD LIGHTS

(2) CAST PRODUCTS  
 100-WATT SIREN SPEAKERS

RECESSED OPTICOM

(2) WHELEN M9 RED  
 SUPER LED WITH CLEAR  
 LENSES

8" x 14" ID  
 PLACARD HOLDER

TECNIQ E13 Silho-X 2.75"  
 RED/WHITE LED LIGHT  
 ABOVE EACH CAB SEAT

BRIGADE  
 360 CAMERA

ROCK GUARDS TO  
 BE STAINLESS STEEL

(2) WHELEN M4 RED SUPER  
 LED GRILLE LIGHTS WITH  
 CLEAR LENSES

HIDDEN UNLOCK SWITCH  
 IN GRILLE AREA

BUELL AIR HORNS

WHELEN HOWLER SIREN  
 SPEAKER SYSTEM

THIS DRAWING IS FOR REPRESENTATIONAL PURPOSES ONLY. DETAILS ARE CONCEPTUAL AND ARE SUBJECT TO CHANGE DURING DESIGN AND CONSTRUCTION  
 DIMENSIONS ARE APPROXIMATE UNLESS NOTED OTHERWISE TO MEET A SPECIFIC CUSTOMER NEED.

MURPHY  
 FIRE DEPARTMENT



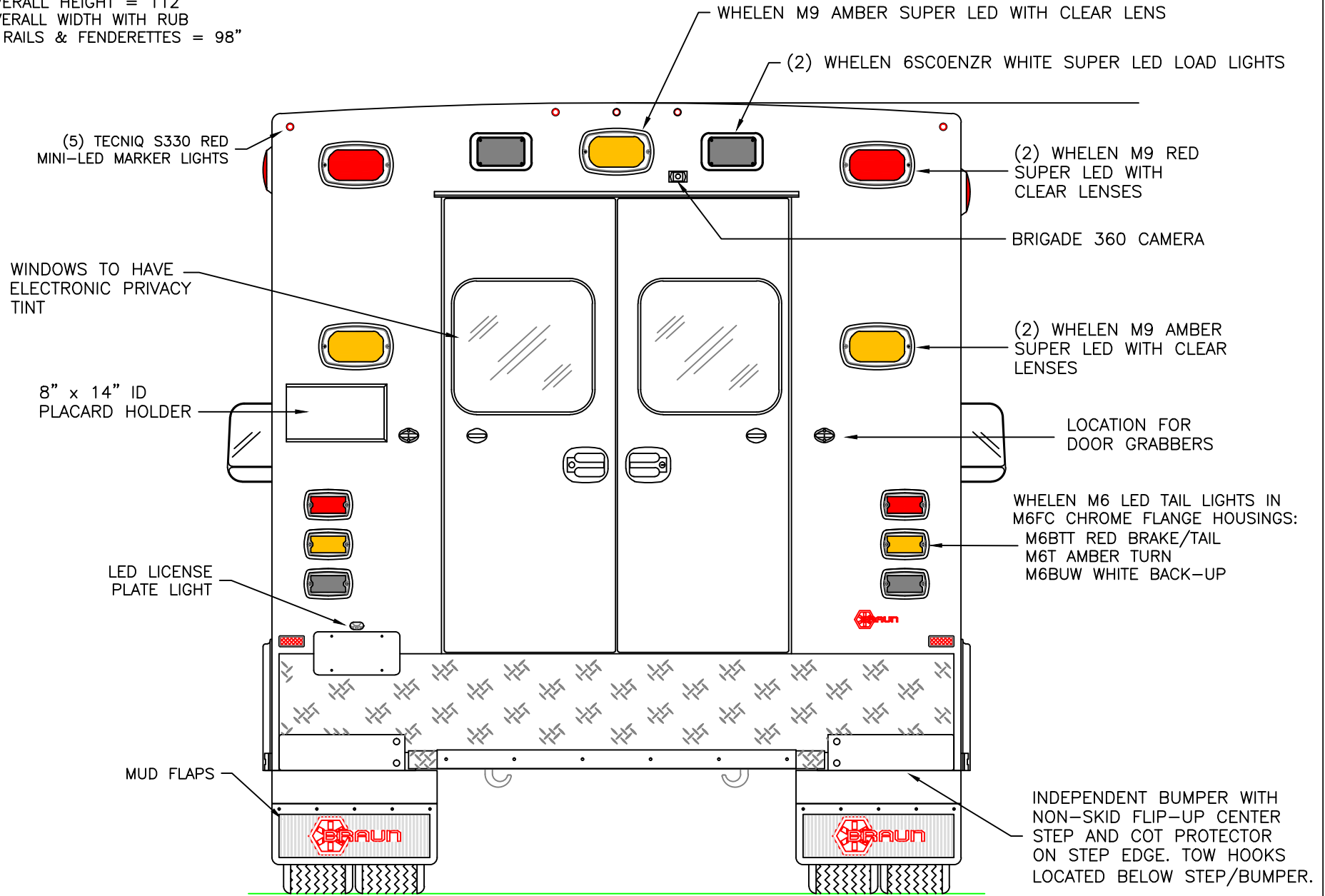
2020 FRONT EXTERIOR VIEW  
 CHIEF XL-1/F550 CHASSIS

DATE:  
 10-6-20  
 DWG. REV.  
 GLF B  
 DATE:

DRAWING NO.  
 MURPHY-1

APPROVAL SIGNATURE:

DIMENSIONS FOR OVERALL HEIGHT AND LENGTH ARE APPROXIMATE  
 OVERALL HEIGHT = 112"  
 OVERALL WIDTH WITH RUB  
 RAILS & FENDERETTES = 98"



THIS DRAWING IS FOR REPRESENTATIONAL PURPOSES ONLY. DETAILS ARE CONCEPTUAL AND ARE SUBJECT TO CHANGE DURING DESIGN AND CONSTRUCTION  
 DIMENSIONS ARE APPROXIMATE UNLESS NOTED OTHERWISE TO MEET A SPECIFIC CUSTOMER NEED.

MURPHY  
 FIRE DEPARTMENT

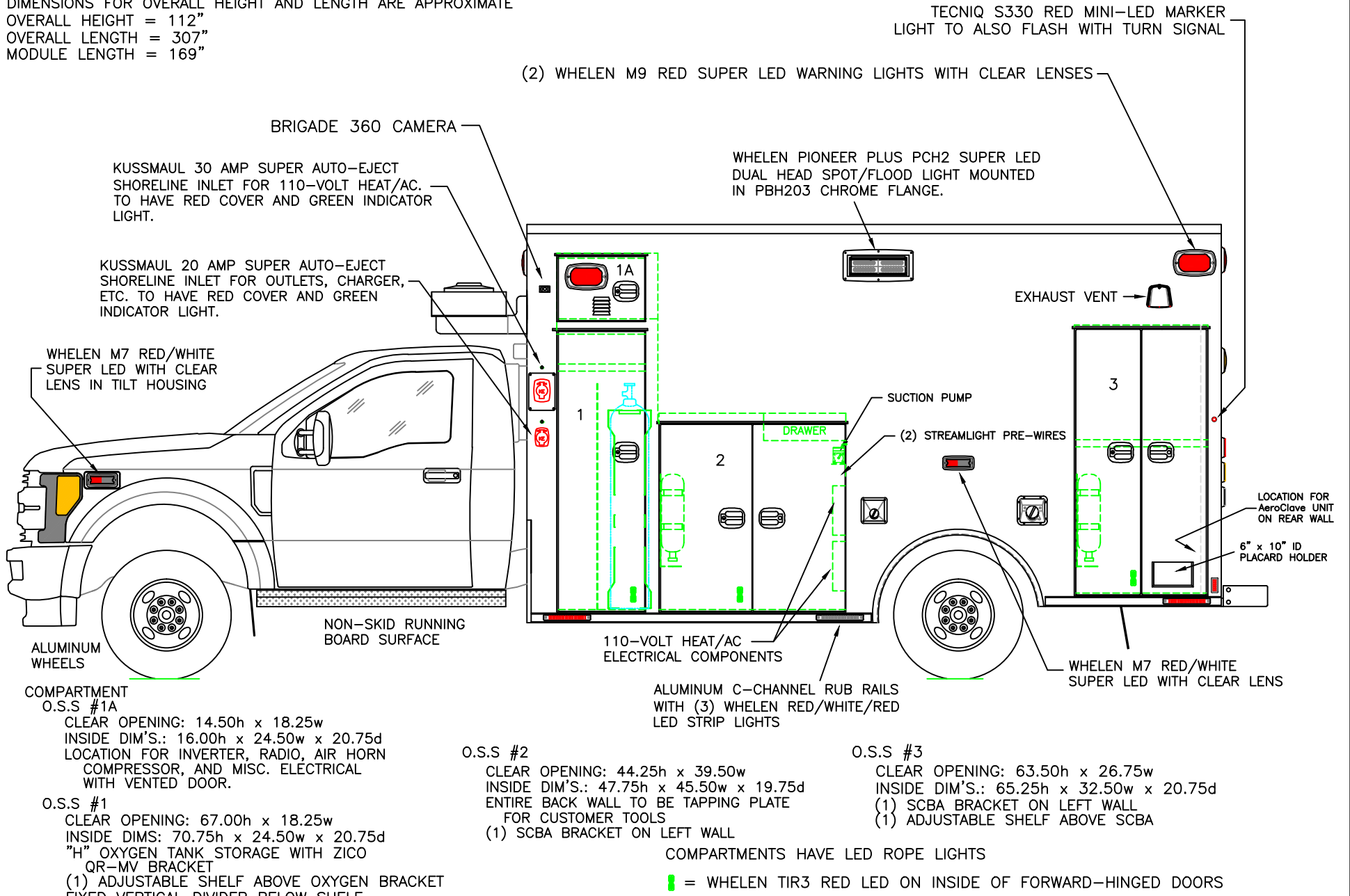


2020 REAR EXTERIOR VIEW  
 CHIEF XL-1/F550 CHASSIS

DATE:	9-21-20	DRAWING NO.	MURPHY-2
DWG.	GLF	REV.	

1:16

DIMENSIONS FOR OVERALL HEIGHT AND LENGTH ARE APPROXIMATE  
 OVERALL HEIGHT = 112"  
 OVERALL LENGTH = 307"  
 MODULE LENGTH = 169"



**COMPARTMENT O.S.S. #1A**  
 CLEAR OPENING: 14.50h x 18.25w  
 INSIDE DIM'S.: 16.00h x 24.50w x 20.75d  
 LOCATION FOR INVERTER, RADIO, AIR HORN COMPRESSOR, AND MISC. ELECTRICAL WITH VENTED DOOR.

**O.S.S. #1**  
 CLEAR OPENING: 67.00h x 18.25w  
 INSIDE DIMS: 70.75h x 24.50w x 20.75d  
 "H" OXYGEN TANK STORAGE WITH ZICO QR-MV BRACKET  
 (1) ADJUSTABLE SHELF ABOVE OXYGEN BRACKET  
 FIXED VERTICAL DIVIDER BELOW SHELF

**O.S.S. #2**  
 CLEAR OPENING: 44.25h x 39.50w  
 INSIDE DIM'S.: 47.75h x 45.50w x 19.75d  
 ENTIRE BACK WALL TO BE TAPPING PLATE FOR CUSTOMER TOOLS  
 (1) SCBA BRACKET ON LEFT WALL

**O.S.S. #3**  
 CLEAR OPENING: 63.50h x 26.75w  
 INSIDE DIM'S.: 65.25h x 32.50w x 20.75d  
 (1) SCBA BRACKET ON LEFT WALL  
 (1) ADJUSTABLE SHELF ABOVE SCBA

COMPARTMENTS HAVE LED ROPE LIGHTS  
 ■ = WHELEN TIR3 RED LED ON INSIDE OF FORWARD-HINGED DOORS

THIS DRAWING IS FOR REPRESENTATIONAL PURPOSES ONLY. DETAILS ARE CONCEPTUAL AND ARE SUBJECT TO CHANGE DURING DESIGN AND CONSTRUCTION DIMENSIONS ARE APPROXIMATE UNLESS NOTED OTHERWISE TO MEET A SPECIFIC CUSTOMER NEED.

TECNIQ S330 RED MINI-LED MARKER LIGHT TO ALSO FLASH WITH TURN SIGNAL

DIMENSIONS FOR OVERALL HEIGHT AND LENGTH ARE APPROXIMATE  
 OVERALL HEIGHT = 112"  
 OVERALL LENGTH = 307"  
 MODULE LENGTH = 169"

(2) WHELEN M9 RED SUPER LED WARNING LIGHTS WITH CLEAR LENSES

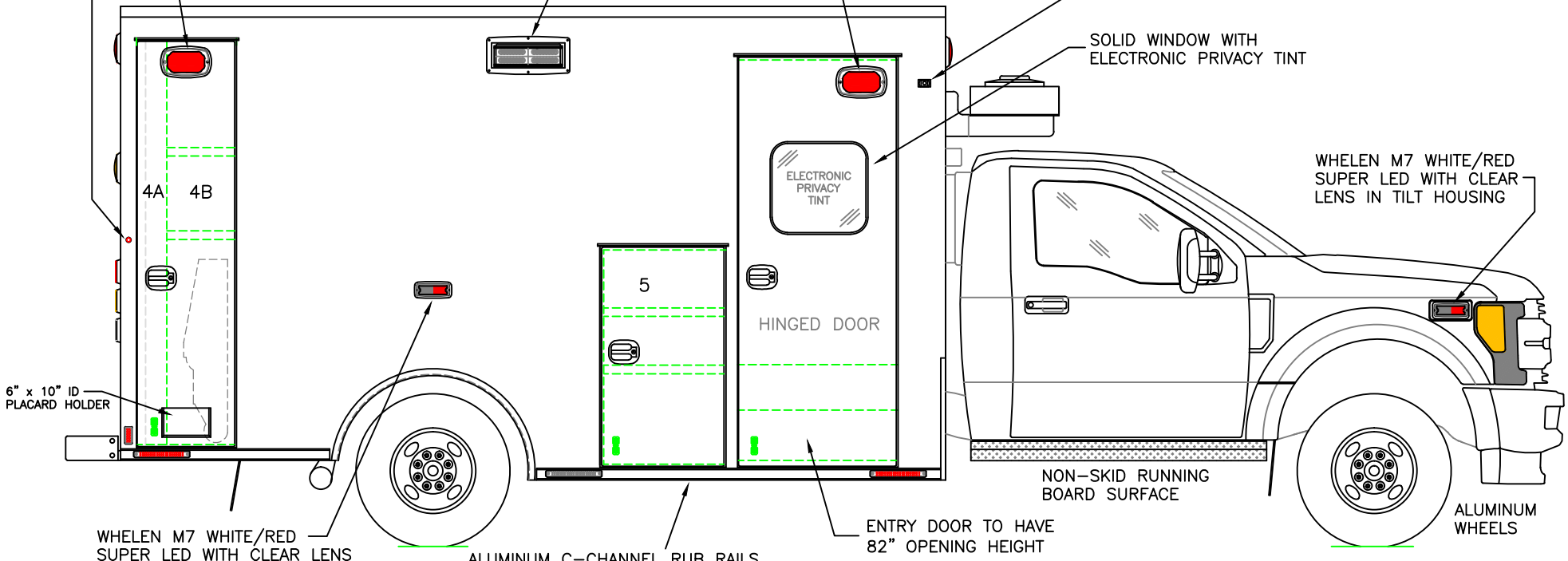
THIS LIGHT TO BE CENTERED NEAR TOP OF DOOR

WHELEN PIONEER PLUS PCH2 SUPER LED DUAL HEAD SPOT/FLOOD LIGHT MOUNTED IN PBH203 CHROME FLANGE.

BRIGADE 360 CAMERA

SOLID WINDOW WITH ELECTRONIC PRIVACY TINT

WHELEN M7 WHITE/RED SUPER LED WITH CLEAR LENS IN TILT HOUSING



6" x 10" ID PLACARD HOLDER

WHELEN M7 WHITE/RED SUPER LED WITH CLEAR LENS

ALUMINUM C-CHANNEL RUB RAILS WITH (3) WHELEN RED/WHITE/RED LED STRIP LIGHTS

ENTRY DOOR TO HAVE 82" OPENING HEIGHT

NON-SKID RUNNING BOARD SURFACE

ALUMINUM WHEELS

COMPARTMENT O.S.S #4

CLEAR OPENING: 81.75h x 16.75w  
 INSIDE DIM'S. 4A: 82.75h x 6.25w x 20.75d  
 BACKBOARD/SCOOP STORAGE

INSIDE DIM'S. 4B: 82.75h x 14.25w x 20.75d  
 INSIDE/OUTSIDE ACCESS WITH (2) ADJUSTABLE SHELVES  
 STAIR CHAIR STORAGE BELOW SHELVES

O.S.S #5

CLEAR OPENING: 43.75h x 22.50w  
 INSIDE DIM'S: 44.50h x 25.75w x 20.75d  
 (INTERIOR HEIGHT DIMENSION IS TO BOTTOM OF INTERIOR CABINET DRAWERS)  
 INSIDE/OUTSIDE ACCESS ABOVE INTERIOR FLOOR LINE  
 (1) FIXED SHELF AT INTERIOR FLOOR LEVEL  
 (1) ADJUSTABLE SHELF ABOVE FIXED SHELF

COMPARTMENTS HAVE LED ROPE LIGHTS

■ = WHELEN TIR3 RED LED ON INSIDE OF #4, #5, AND ENTRY DOORS

THIS DRAWING IS FOR REPRESENTATIONAL PURPOSES ONLY. DETAILS ARE CONCEPTUAL AND ARE SUBJECT TO CHANGE DURING DESIGN AND CONSTRUCTION DIMENSIONS ARE APPROXIMATE UNLESS NOTED OTHERWISE TO MEET A SPECIFIC CUSTOMER NEED.

MURPHY  
 FIRE DEPARTMENT



2020 CURBSIDE EXTERIOR VIEW  
 CHIEF XL-1/F550 CHASSIS

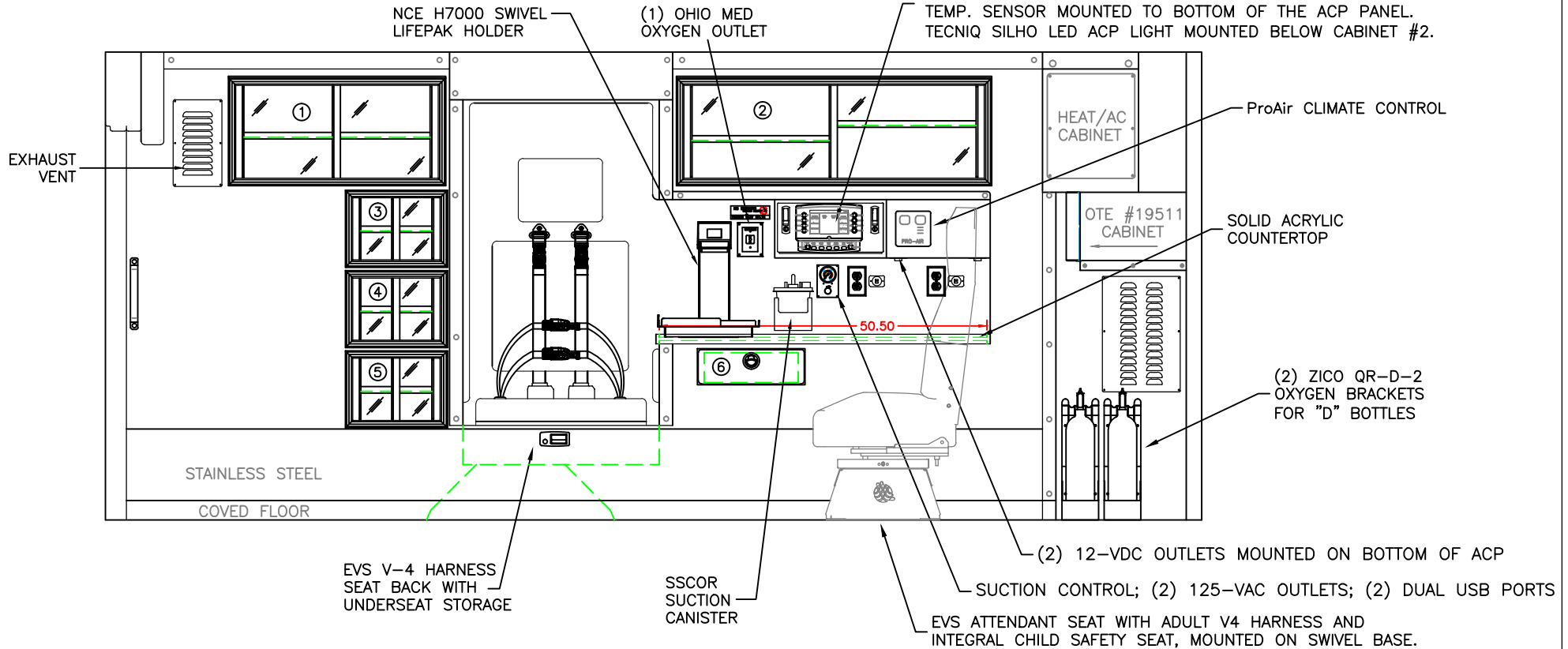
1:30

DATE:	10-6-20	
DWG.	GLF	REV. C

DRAWING NO.  
 MURPHY-4

COMPARTMENTS #1 AND #2 HAVE LIFT-UP RESTOCKING FRAMES

WELDON VISTA CONTROL SCREEN MOUNTED ON ANGLED FLIP-DOWN PANEL WITH CHROME LEVER LATCHES.  
TEMP. SENSOR MOUNTED TO BOTTOM OF THE ACP PANEL.  
TECNIQ SILHO LED ACP LIGHT MOUNTED BELOW CABINET #2.



COMPARTMENT

#1 DOOR OPENING: 14.25h x 31.25w  
INSIDE DIMS: 16.50h x 33.00w x 17.25d  
(1) ADJUSTABLE SHELF  
SLIDING POLYCARBONATE DOORS  
TOTAL CABINET WEIGHT RATING = 25 lbs.

#2 DOOR OPENING: 14.25h x 46.25w  
INSIDE DIMS: 16.50h x 48.00w x 17.25d  
(1) ADJUSTABLE SHELF ON EACH SIDE OF CENTER DIVIDER  
SLIDING POLYCARBONATE DOORS  
TOTAL CABINET WEIGHT RATING = 25 lbs.

#3, #4, #5 DOOR OPENINGS: 9.50h x 13.50w  
INSIDE DIMS: 11.00h x 15.00w x 17.25d  
(1) ADJUSTABLE SHELF  
SLIDING POLYCARBONATE DOORS  
TOTAL CABINET WEIGHT RATING = 15 lbs. EACH

#6 PULL-OUT DRAWER WITH HINGED ACRYLIC WRITING SURFACE  
INSIDE DIMS: 4.50h x 14.50w x 13.25d  
LOCKING STAINLESS STEEL FLUSH PULL LATCH  
TOTAL DRAWER WEIGHT RATING = 10 lbs.

CABINETS TO BE ALUMINUM

THIS DRAWING IS FOR REPRESENTATIONAL PURPOSES ONLY. DETAILS ARE CONCEPTUAL AND ARE SUBJECT TO CHANGE DURING DESIGN AND CONSTRUCTION  
DIMENSIONS ARE APPROXIMATE UNLESS NOTED OTHERWISE TO MEET A SPECIFIC CUSTOMER NEED.

MURPHY  
FIRE DEPARTMENT



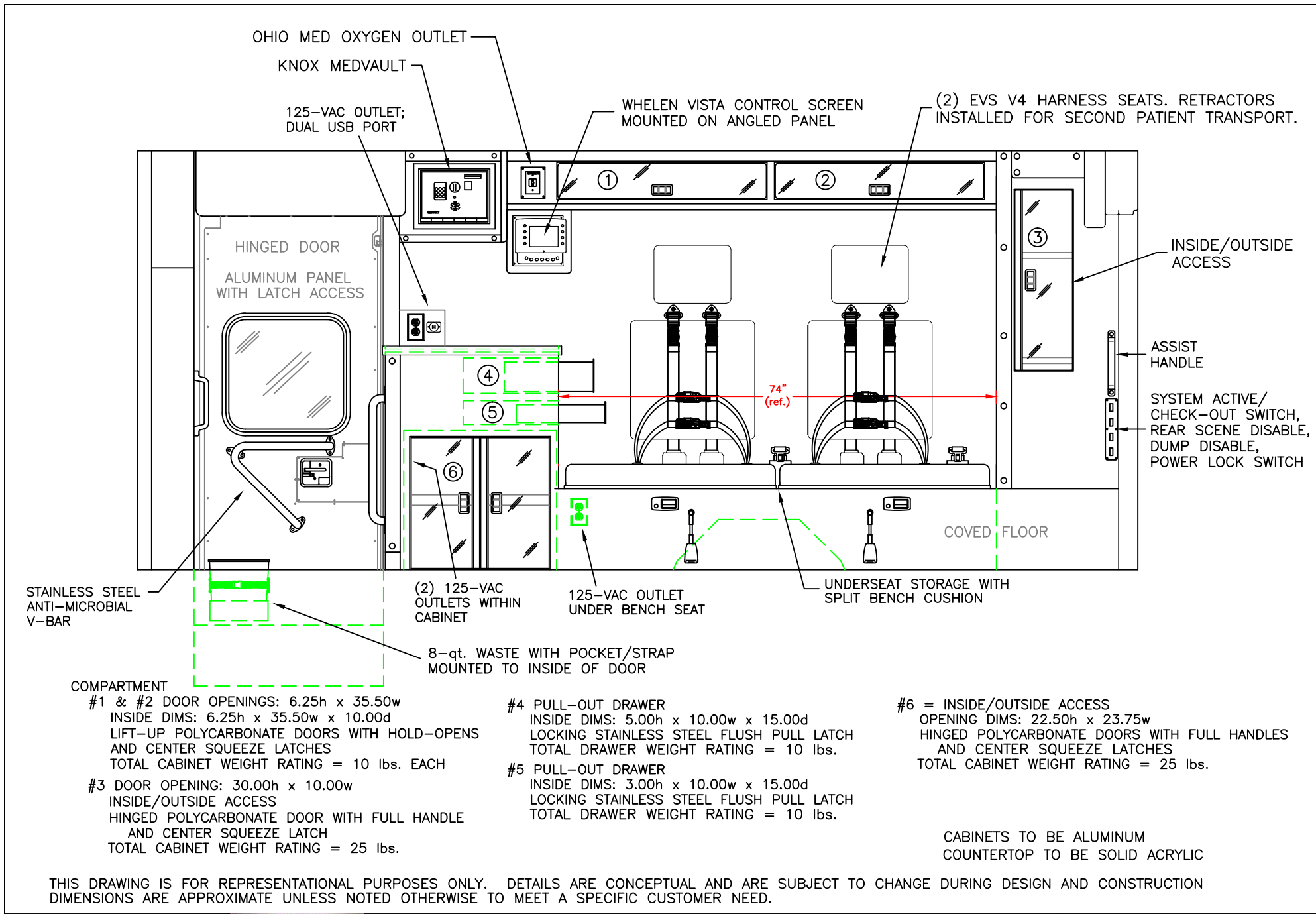
2020 STREETSIDE INTERIOR VIEW  
CHIEF XL-1

1:22

DATE:	9-25-20
DWG.:	GLF
REV.:	B

DRAWING NO.

MURPHY-5



STAINLESS STEEL ANTI-MICROBIAL V-BAR

COMPARTMENT

- #1 & #2 DOOR OPENINGS: 6.25h x 35.50w  
INSIDE DIMS: 6.25h x 35.50w x 10.00d  
LIFT-UP POLYCARBONATE DOORS WITH HOLD-OPENS AND CENTER SQUEEZE LATCHES  
TOTAL CABINET WEIGHT RATING = 10 lbs. EACH
- #3 DOOR OPENING: 30.00h x 10.00w  
INSIDE/OUTSIDE ACCESS  
HINGED POLYCARBONATE DOOR WITH FULL HANDLE AND CENTER SQUEEZE LATCH  
TOTAL CABINET WEIGHT RATING = 25 lbs.

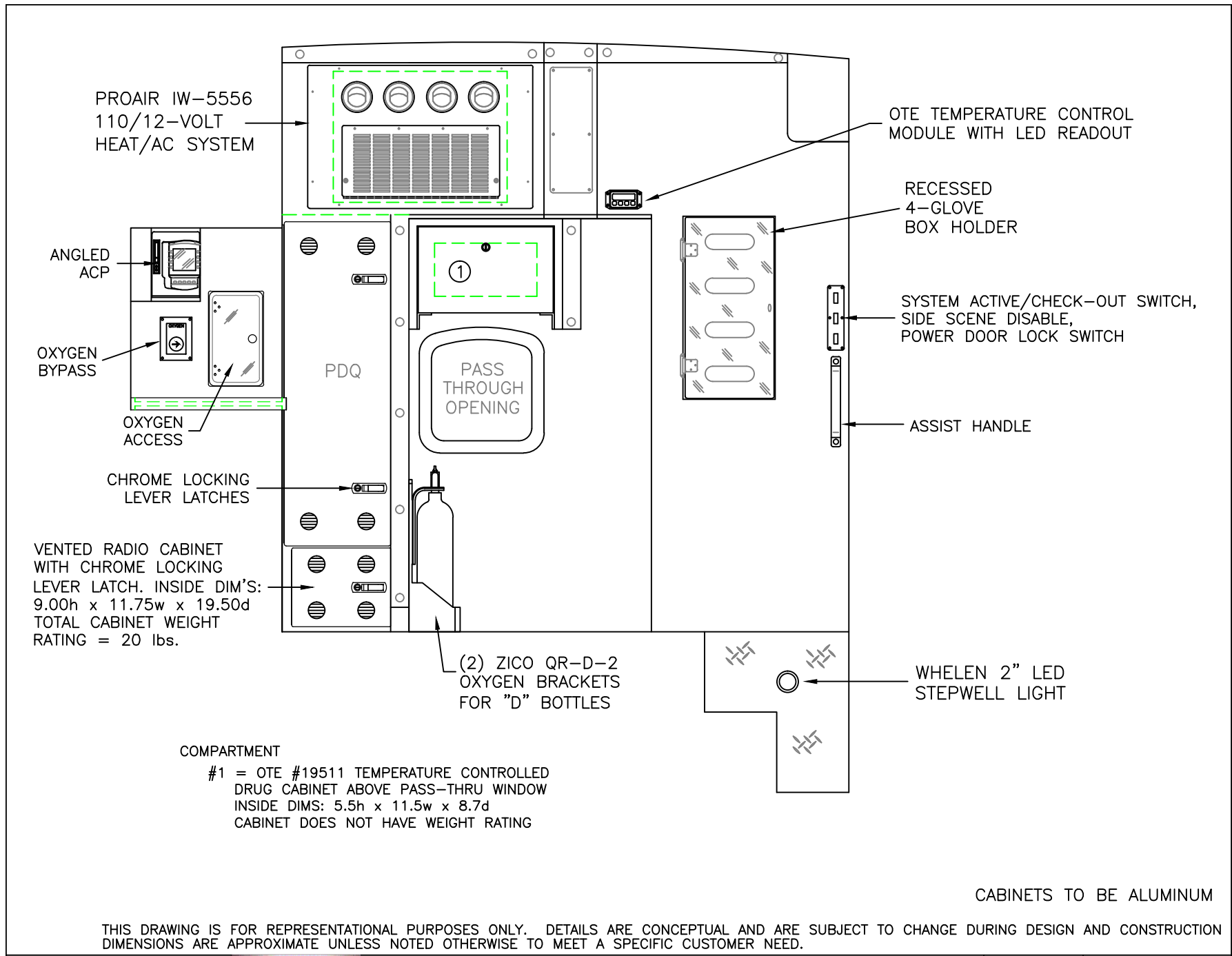
- #4 PULL-OUT DRAWER  
INSIDE DIMS: 5.00h x 10.00w x 15.00d  
LOCKING STAINLESS STEEL FLUSH PULL LATCH  
TOTAL DRAWER WEIGHT RATING = 10 lbs.
- #5 PULL-OUT DRAWER  
INSIDE DIMS: 3.00h x 10.00w x 15.00d  
LOCKING STAINLESS STEEL FLUSH PULL LATCH  
TOTAL DRAWER WEIGHT RATING = 10 lbs.

- #6 = INSIDE/OUTSIDE ACCESS  
OPENING DIMS: 22.50h x 23.75w  
HINGED POLYCARBONATE DOORS WITH FULL HANDLES AND CENTER SQUEEZE LATCHES  
TOTAL CABINET WEIGHT RATING = 25 lbs.

CABINETS TO BE ALUMINUM  
COUNTERTOP TO BE SOLID ACRYLIC

THIS DRAWING IS FOR REPRESENTATIONAL PURPOSES ONLY. DETAILS ARE CONCEPTUAL AND ARE SUBJECT TO CHANGE DURING DESIGN AND CONSTRUCTION  
DIMENSIONS ARE APPROXIMATE UNLESS NOTED OTHERWISE TO MEET A SPECIFIC CUSTOMER NEED.

1:20



PROAIR IW-5556  
110/12-VOLT  
HEAT/AC SYSTEM

OTE TEMPERATURE CONTROL  
MODULE WITH LED READOUT

ANGLD  
ACP

RECESSED  
4-GLOVE  
BOX HOLDER

OXYGEN  
BYPASS

SYSTEM ACTIVE/CHECK-OUT SWITCH,  
SIDE SCENE DISABLE,  
POWER DOOR LOCK SWITCH

OXYGEN  
ACCESS

ASSIST HANDLE

CHROME LOCKING  
LEVER LATCHES

VENTED RADIO CABINET  
WITH CHROME LOCKING  
LEVER LATCH. INSIDE DIM'S:  
9.00h x 11.75w x 19.50d  
TOTAL CABINET WEIGHT  
RATING = 20 lbs.

(2) ZICO QR-D-2  
OXYGEN BRACKETS  
FOR "D" BOTTLES

WHELEN 2" LED  
STEPWELL LIGHT

COMPARTMENT

#1 = OTE #19511 TEMPERATURE CONTROLLED  
DRUG CABINET ABOVE PASS-THRU WINDOW  
INSIDE DIMS: 5.5h x 11.5w x 8.7d  
CABINET DOES NOT HAVE WEIGHT RATING

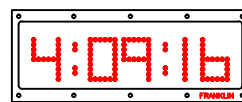
CABINETS TO BE ALUMINUM

THIS DRAWING IS FOR REPRESENTATIONAL PURPOSES ONLY. DETAILS ARE CONCEPTUAL AND ARE SUBJECT TO CHANGE DURING DESIGN AND CONSTRUCTION  
DIMENSIONS ARE APPROXIMATE UNLESS NOTED OTHERWISE TO MEET A SPECIFIC CUSTOMER NEED.

MURPHY FIRE DEPARTMENT		2020 PARTITION INTERIOR VIEW CHIEF XL-1	DATE: 9-22-20	DRAWING NO.
			DWG. GLF	REV. A MURPHY-7

FRANKLIN 12-VOLT DIGITAL CLOCK

LOCATION FOR AeroClave NOZZLE ASSEMBLY



ALUMINUM PANEL WITH LATCH ACCESS

ALUMINUM PANEL WITH LATCH ACCESS

24" STAINLESS STEEL ANTI-MICROBIAL ASSIST HANDLE MOUNTED AT AN ANGLE

STAINLESS STEEL ANTI-MICROBIAL V-BARS

RED/WHITE REFLECTIVE STRIP ON INSIDE OF EACH DOOR

WHELEN TIR3 RED LED ON INSIDE OF EACH DOOR

THIS DRAWING IS FOR REPRESENTATIONAL PURPOSES ONLY. DETAILS ARE CONCEPTUAL AND ARE SUBJECT TO CHANGE DURING DESIGN AND CONSTRUCTION DIMENSIONS ARE APPROXIMATE UNLESS NOTED OTHERWISE TO MEET A SPECIFIC CUSTOMER NEED.

MURPHY  
FIRE DEPARTMENT



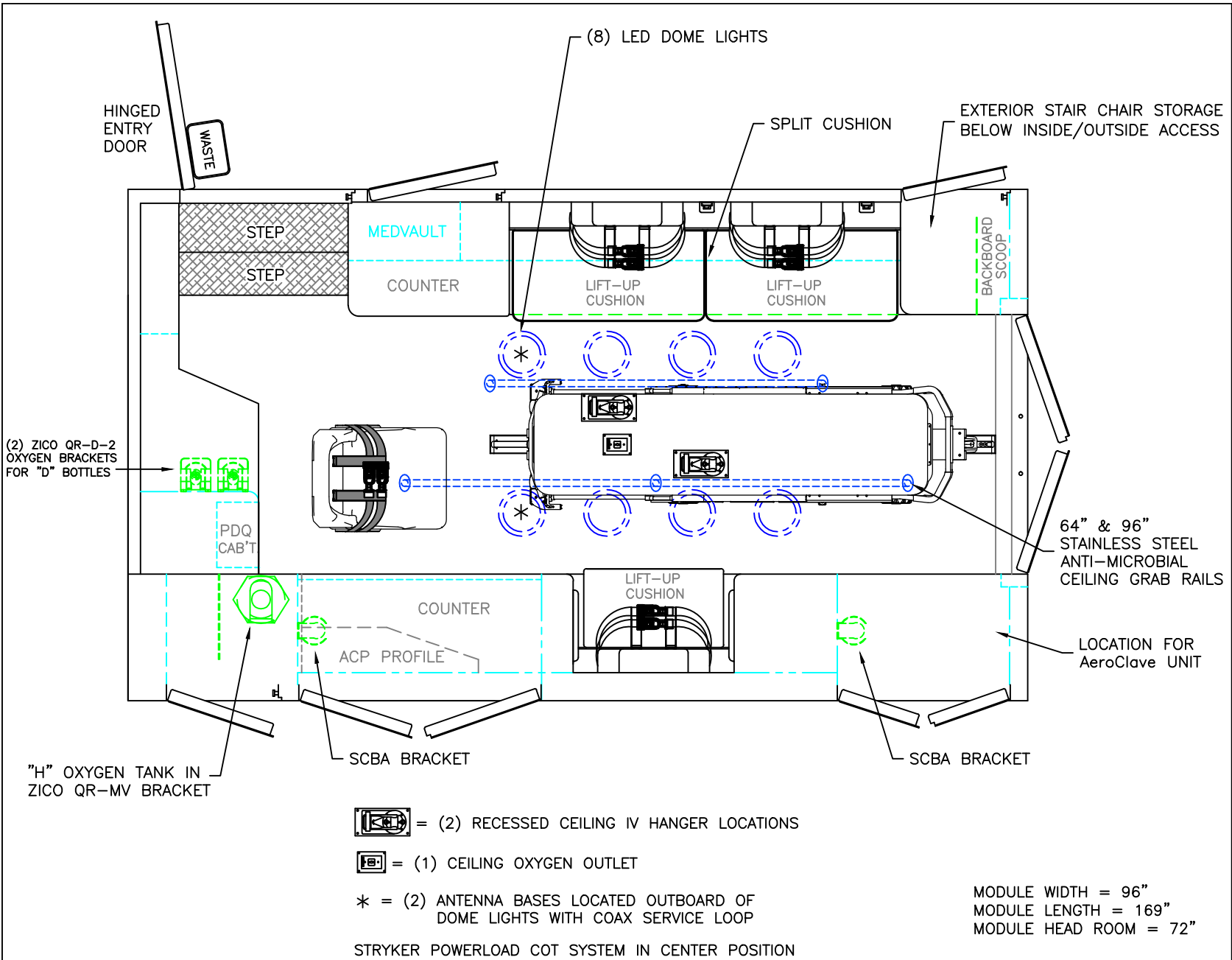
2020 REAR INTERIOR VIEW  
CHIEF XL-1

1:12

DATE:	9-22-20
DWG.	REV. A

DRAWING NO.  
MURPHY-8





THIS DRAWING IS FOR REPRESENTATIONAL PURPOSES ONLY. DETAILS ARE CONCEPTUAL AND ARE SUBJECT TO CHANGE DURING DESIGN AND CONSTRUCTION DIMENSIONS ARE APPROXIMATE UNLESS NOTED OTHERWISE TO MEET A SPECIFIC CUSTOMER NEED.

MURPHY FIRE DEPARTMENT		2020 FLOOR INTERIOR VIEW CHIEF XL-1	DATE:	9-22-20	DRAWING NO.	MURPHY-9
			DWG.	GLF	REV.	

1:22