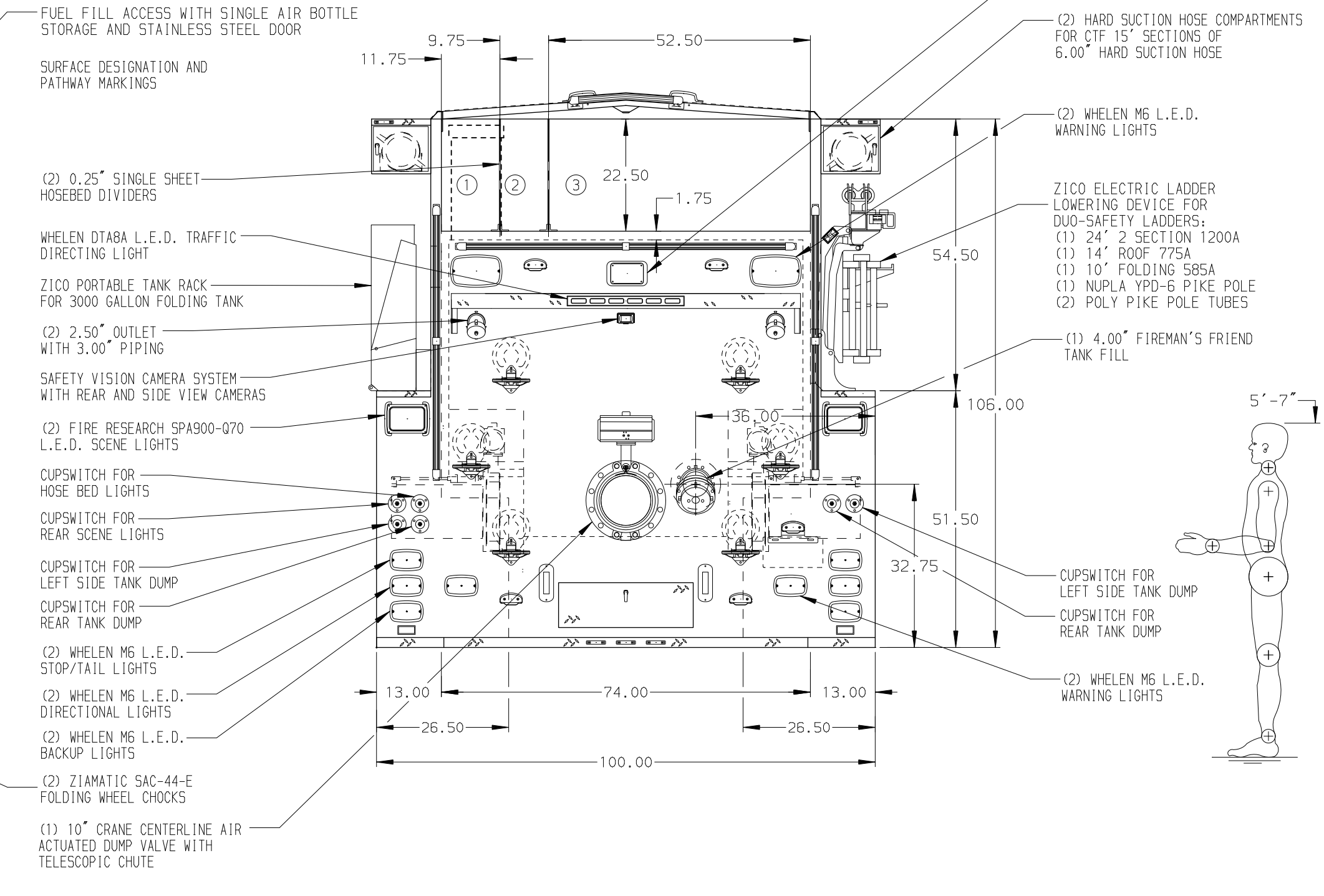
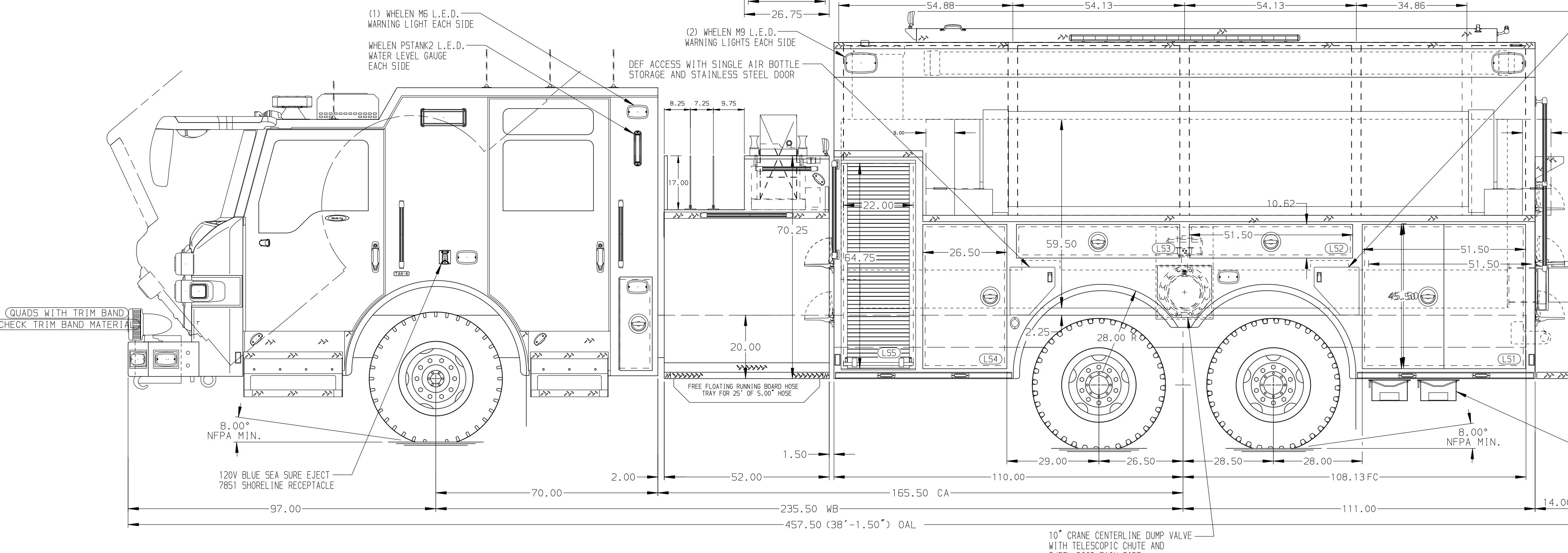


HOSEBED CAPACITIES
 (1) - 300' OF 3.00" HOSE
 (2) - 400' OF 2.50" HOSE
 (3) - 1500' OF 5.00" HOSE



ALUMINUM BODY

SIDE ROLL AND FRONTAL IMPACT PROTECTION

NOTE
 DIMENSIONS SHOWN ARE APPROXIMATE AND ARE SUBJECT TO MINOR DEVIATIONS AS MAY OCCUR OR BE NECESSARY IN CONSTRUCTION. MINOR DETAILS NOT SHOWN.

- BATTERY CHARGER LOCATED IN COMPARTMENT LS4
- DUAL L.E.D. LIGHT STRIPS LOCATED IN HOSE BED
- ONE FULL WIDTH/DEPTH ADJUSTABLE SHELF IN COMPARTMENT LS2,LS3,LS4,RS1,TWO IN LS1,RS4
- ONE FLOOR MOUNTED SLIDE-OUT TRAY IN COMPARTMENT LS1,RS1,RS4
- 120V DUPLEX RECEPTACLE LOCATED PER SHOP ORDER
- AIR INLET/OUTLET WITH DISCONNECT FITTING ON D.S. PUMP PANEL

CUSTOMER APPROVAL

APPROVED BY:	
DATE:	
CHASSIS DATA	TITLE
PIERCE	FOR
MODEL	DWG NO.
VELOCITY	



2000-D-3000P, 221" TANKER BODY, (2) X-LAYS DELUGE, ZICO LADDER TACK, ZICO PORTABLE TANK RACK
 KLEIN FIRE DEPARTMENT
 KLEIN, TEXAS
 36964AD

JOB NO.	36964
SCALE	1:24
DATE	
DRAWN BY	JWO
CHECKED BY	CZA
SHEET SIZE	D
SHEET NO.	1 OF 1