

**PUMPER
BODY**

Long Aluminum 2nd Gen Pumper

CHASSIS
Enforcer Chassis

**CHASSIS
AXLE, FRONT, CUSTOM**

19,500 Lb TAK-4 Axle

AXLE, REAR

27,000 Lb Dana Axle

ENGINE

450 HP Cummins L9 Engine

TRANSMISSION

Allison 5th Gen, 3000 EVS P

BUMPER

19" Extended Painted Steel

CAB

7010 Enforcer Cab

BODY

WATER TANK

980 Gallon Poly Water Tank

COMPT, PUMPER, REAR

58.00" FF RollUp Rear Compt

COMPT, PUMPER, LEFT SIDE

161" RollUp Full Height Front & Rear FDLR

COMPT, PUMPER, RIGHT SIDE

161" RollUp Full Height Front & Rear FDLR

**FIRE SUPPRESSION
PUMPHOUSE**

45" Control Zone Top Mount

PUMP

2000 GPM Waterous CSU

CROSSLAYS, 1.50"

1.50" Crosslays Not Required

CROSSLAYS, 2.50"

2.50" Crosslay Not Required

SPEEDLAYS

(2) 1.50" & (1) 2.50" W/Troy Std. Capacity

GENERATOR

Generator Not Required

Foam System

Husky 3 Single Agent Foam System

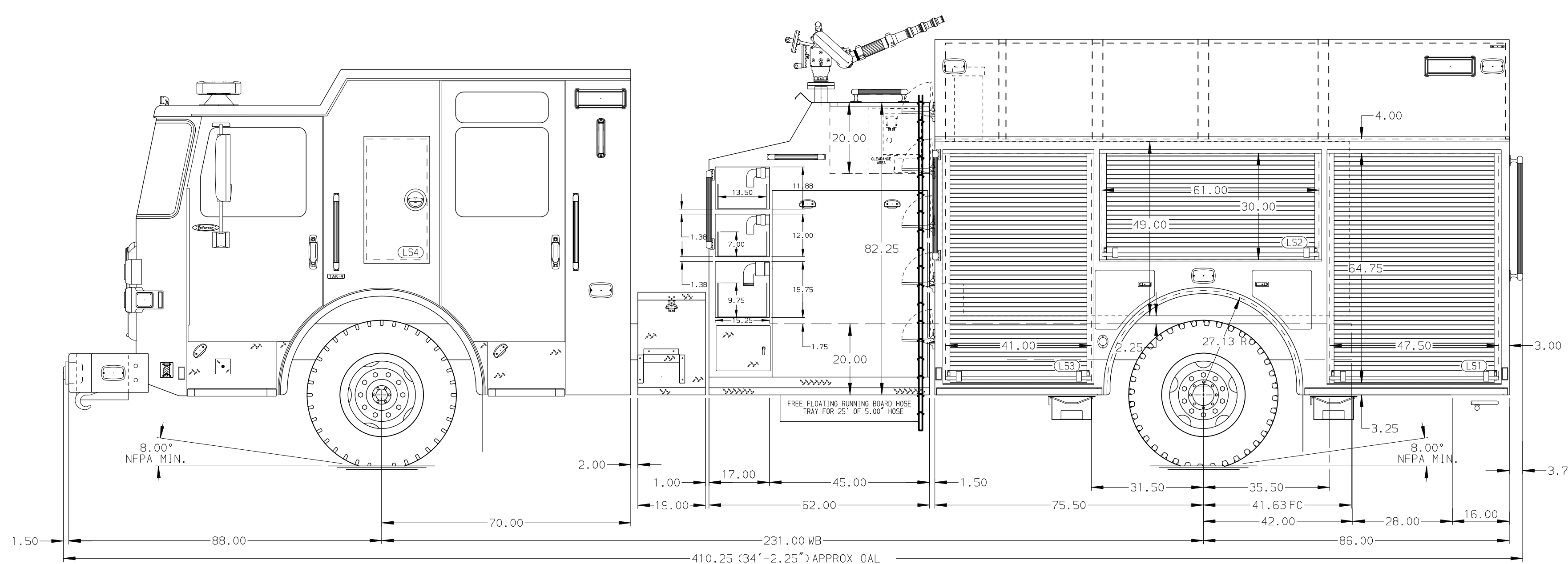
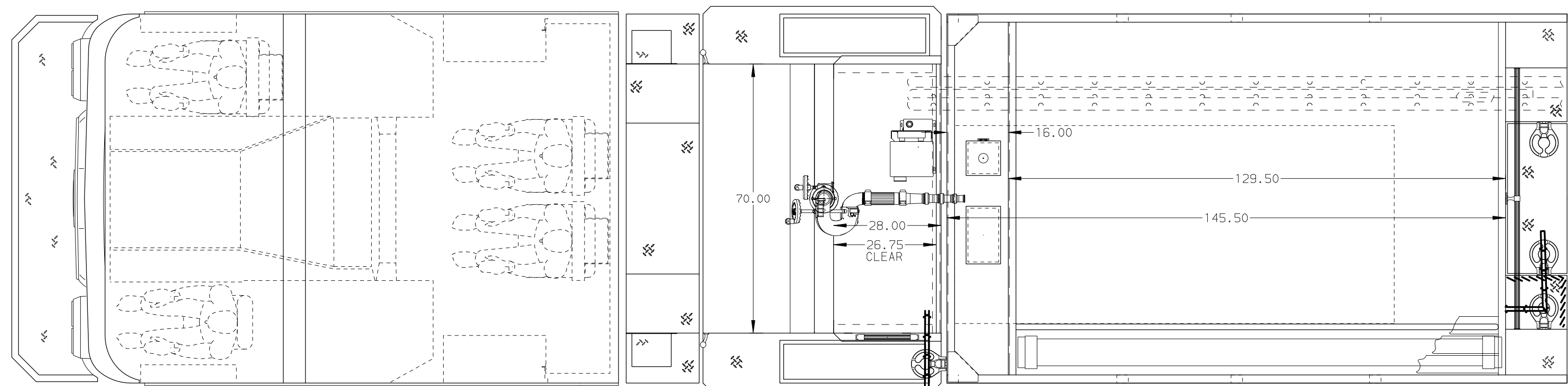
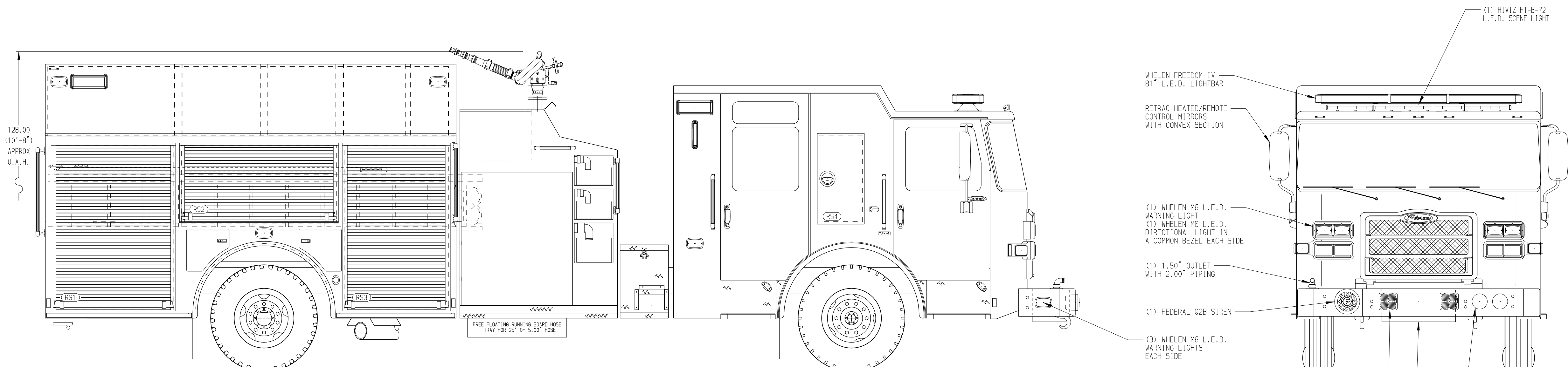
Foam Cell

20 Gallon Foam Cell, Reduced Water

Side Roll and Frontal Impact Protection

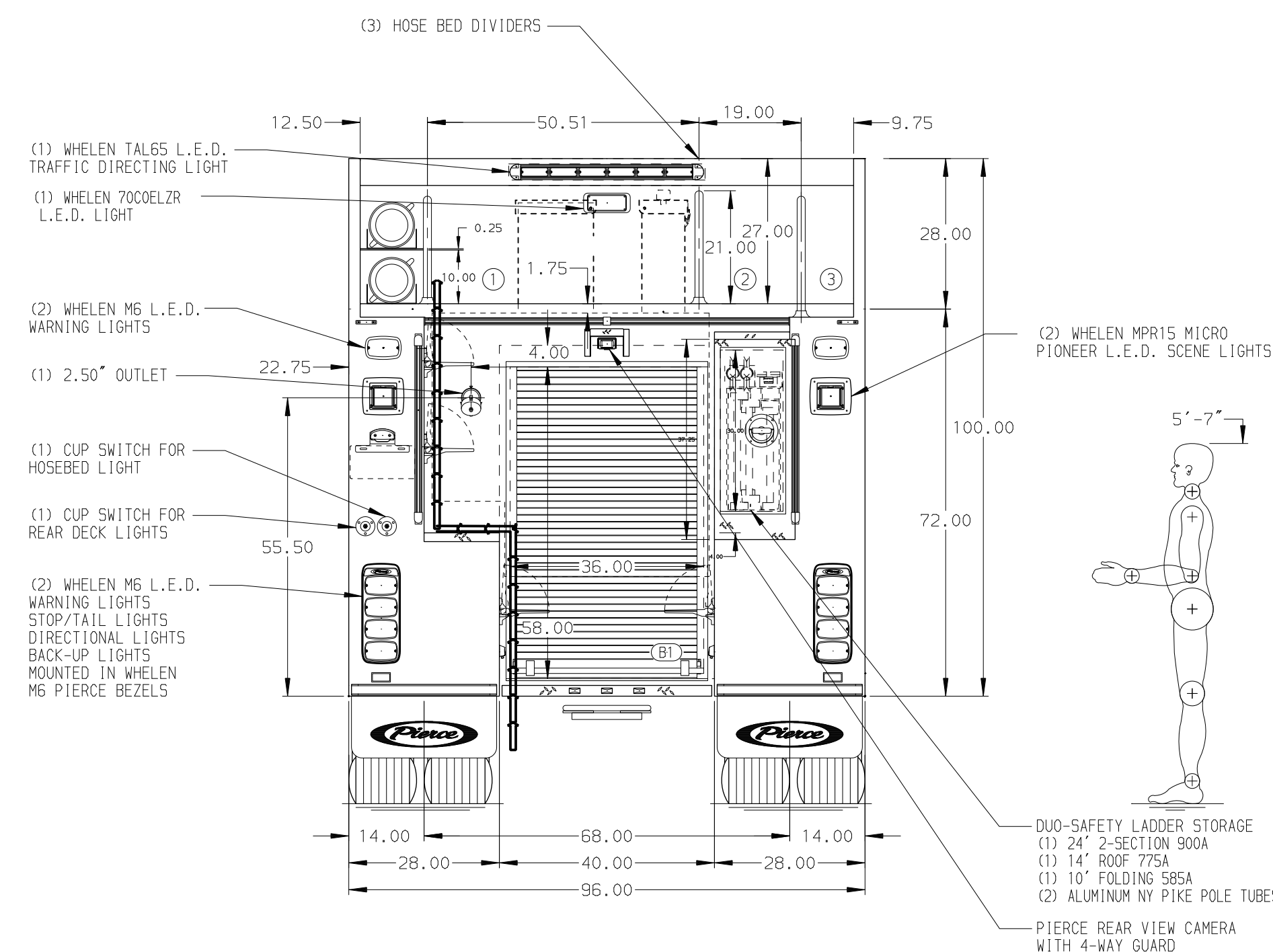
NOTE
DIMENSIONS SHOWN ARE APPROXIMATE AND ARE SUBJECT TO MINOR DEVIATIONS AS MAY OCCUR OR BE NECESSARY IN CONSTRUCTION. MINOR DETAILS NOT SHOWN.

- SHORELINE RECEPTACLE WITH KUSSMALL SUPER AUTO-EJECT LOCATED ON DRIVER SIDE OF THE CAB
- AIR INLET WITH DISCONNECT COUPLING RECESSED IN THE DRIVER SIDE STEPMELL
- BATTERY CHARGER LOCATED IN COMPARTMENT PER SHOP ORDER
- BATTERY CHARGE INDICATOR LOCATED ON THE DRIVER SIDE SEAT RISER
- ADJUSTABLE SHELVES IN COMPARTMENTS PER SHOP ORDER
- ONE FLOOR MOUNTED SLIDE-OUT TRAY IN COMPARTMENT PER SHOP ORDER



HOSEBED CAPACITY

BED 1	1000' OF 5.00" D.J. POLY HOSE
BED 2	300' OF 3.00" D.J. POLY HOSE
BED 3	200' OF 2.00" D.J. POLY HOSE



Pierce MANUFACTURING INC.		JOB NO.	35943
		SCALE	DATE
		1:24	
TITLE	Pierce Pumper Approval Drawing	DRAWN BY	MMF
FOR	Blanco County ESD 2	CHECKED BY	COL
DWG NO.	35943AD	SHEET SIZE	SHEET NO.
		D	1 OF 1

REV	DATE	BY	CH	ENFORCER
1	18AUG21	MMF	PJP	CHASSIS DATA
2	30APR21	MMF	CHR	PIERCE
3	19MAR21	MMF	CHR	MODEL