

PUMPER BODY

Long Aluminum 2nd Gen Pumper

CHASSIS

Sober FR Chassis

CHASSIS AXLE, FRONT, CUSTOM
18,000 Lb Dana Axle

AXLE, REAR
31,000 Lb Meritor Axle

ENGINE
450 HP Cummins L9 Engine

TRANSMISSION
Allison 5th Gen, 3000 EVS P

BUMPER
16" Extended Painted Steel

CAB
6010 Sober FR Cab

BODY WATER TANK
1250 Gallon Poly Water Tank

COMPT, PUMPER, REAR
37.75" FF Lap, 31.88" Deep Rear Compt

COMPT, PUMPER, LEFT SIDE
161" Lap Full Height Front & Rear

COMPT, PUMPER, RIGHT SIDE
161" Lap Full Height Front & Rear FDLER

FIRE SUPPRESSION PUMPHOUSE

42" Control Zone Top Mount

PUMP

1500 GPM Waterous CSU

CROSSLAYS, 1.50"
(2) 1.50" Crosslays Std. Capacity

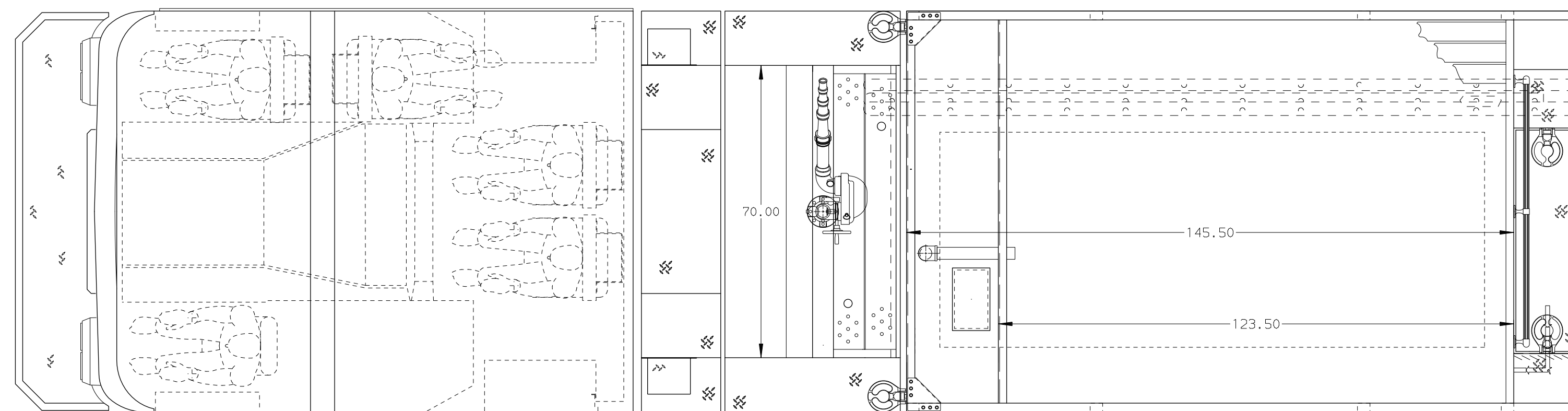
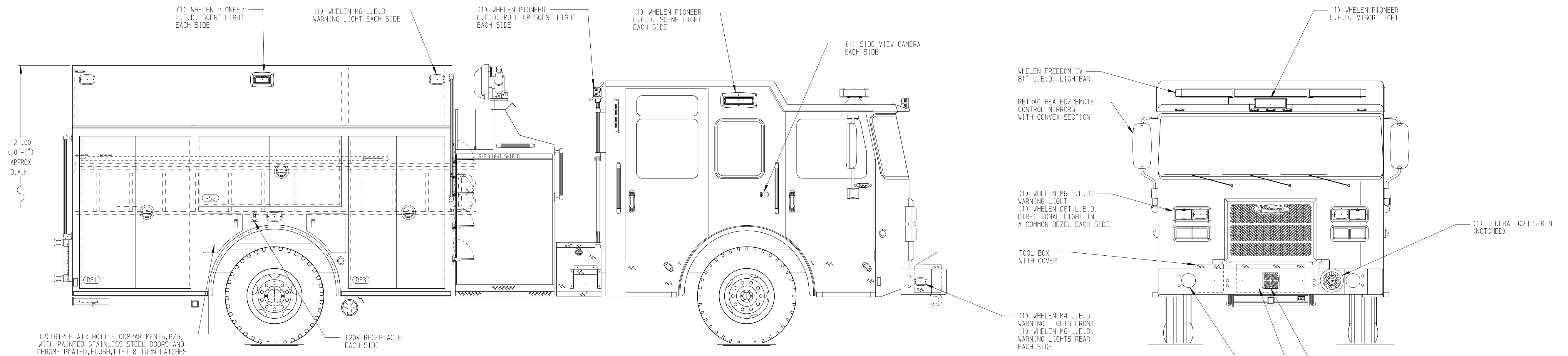
CROSSLAYS, 2.50"
2.50" Crosslay Not Required

SPEEDLAYS
1.50" Not Required

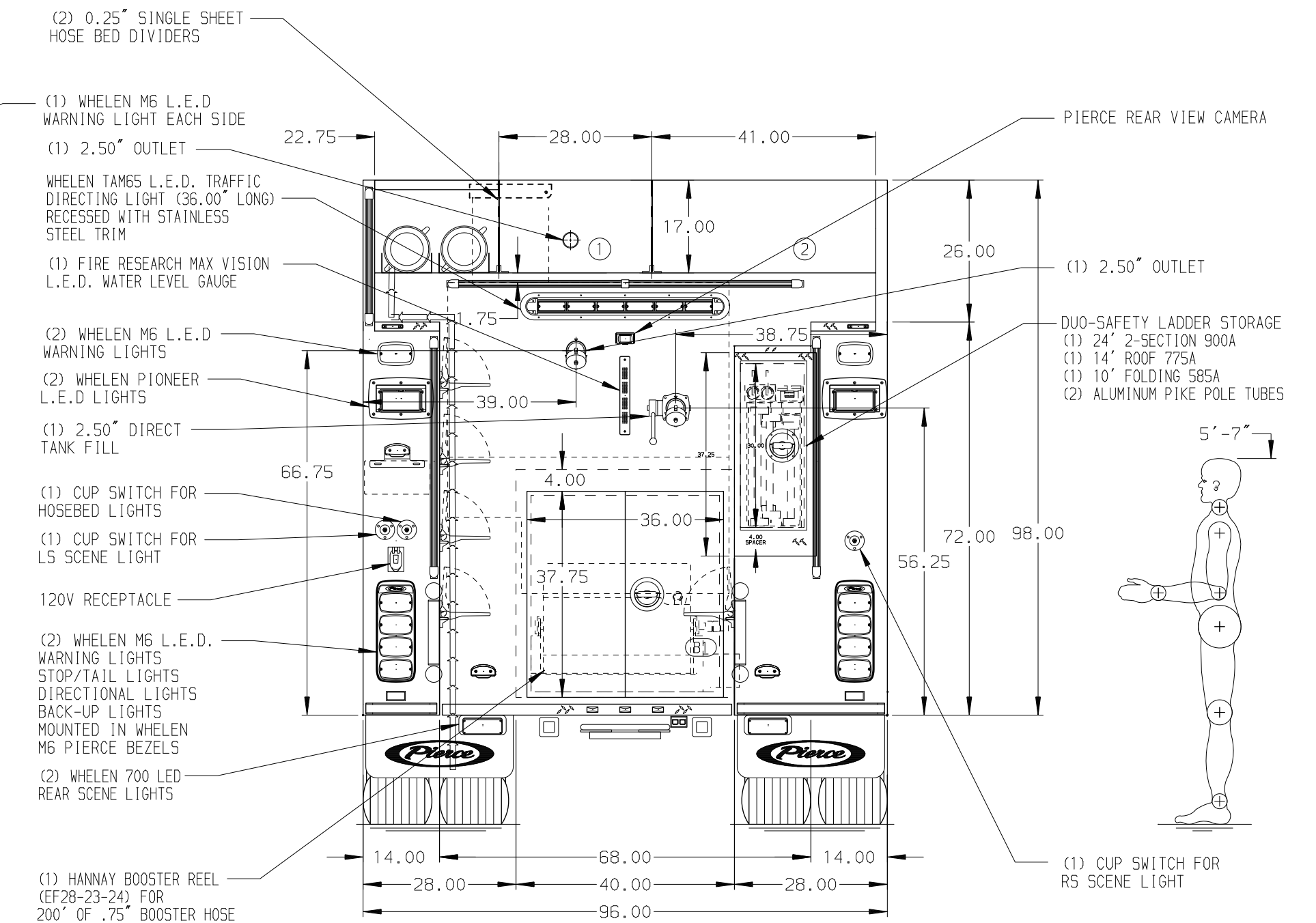
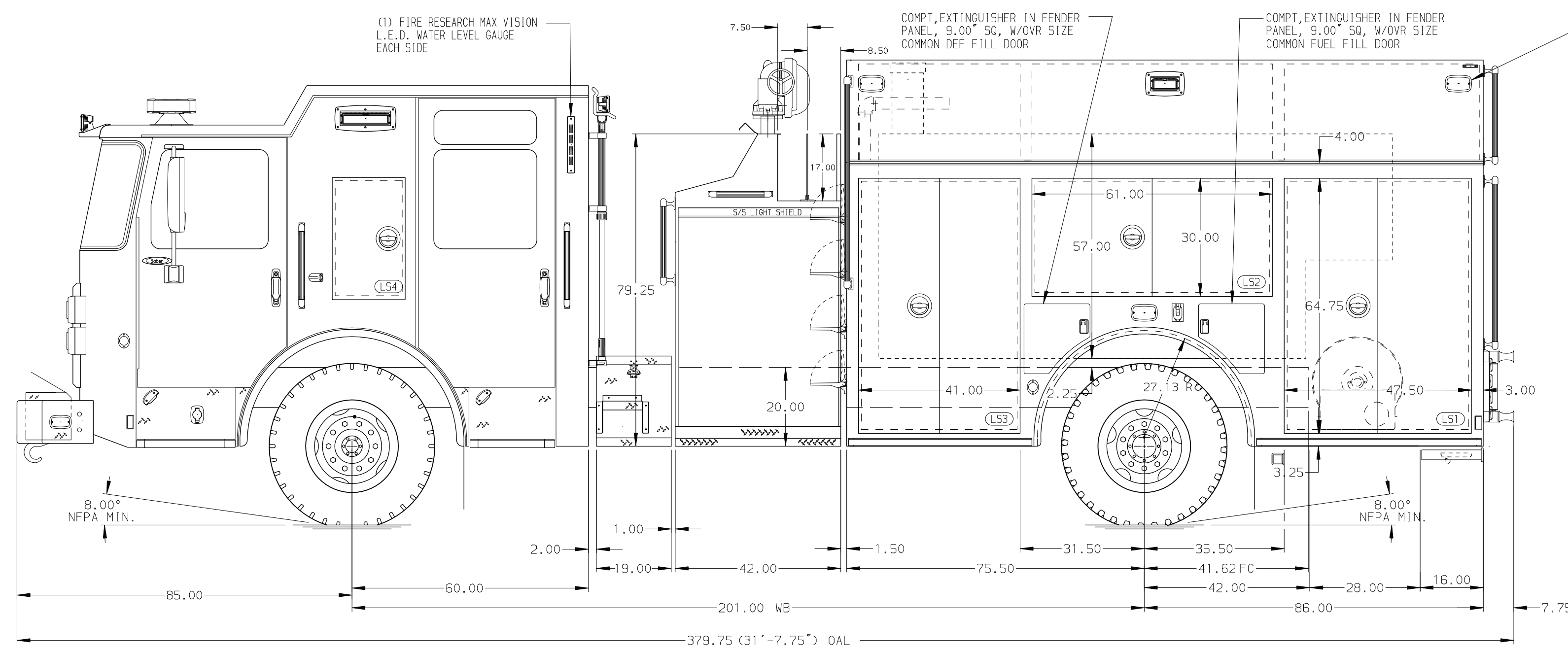
GENERATOR
Generator Not Required

Foam System
Foam System Not Required

Foam Cell
Foam Cell Not Required



HOSEBED CAPACITY	
BED 1	1000' OF 3.00" D.J. POLY HOSE
BED 2	1000' OF 5.00" D.J. POLY HOSE



MAXIMUM O.A.L. = 384.00"

NOTE
DIMENSIONS SHOWN ARE APPROXIMATE AND ARE SUBJECT TO MINOR DEVIATIONS AS MAY OCCUR OR BE NECESSARY IN CONSTRUCTION. MINOR DETAILS NOT SHOWN.

REV	DATE	BY	CH	SABER FR
1	11SEP20	JLA	AJA	PIERCE
2	19AUG20	RHU	AJA	MODEL

Pierce MANUFACTURING INC.		JOB NO.	35528
TITLE		SCALE	DATE
Pierce Pumper Approval Drawing		1:24	
MAKE		DRAWN BY	MMF
FOR		CHECKED BY	COL
Caddo Parish District 3		SHEET SIZE	SHEET NO.
DWG NO.		35528AD	1 OF 1