

DIMENSIONS FOR OVERALL HEIGHT AND LENGTH ARE APPROXIMATE
 OVERALL HEIGHT = 102.5"
 OVERALL WIDTH WITH RUB
 RAILS & FENDERETTES = 95"

(7) WHELEN 600 SUPER LED WITH CLEAR LENSES
 RED / RED / RED / WHITE / RED / RED / RED

(5) TECNIQ S330 AMBER
 MINI-LED MARKER LIGHTS

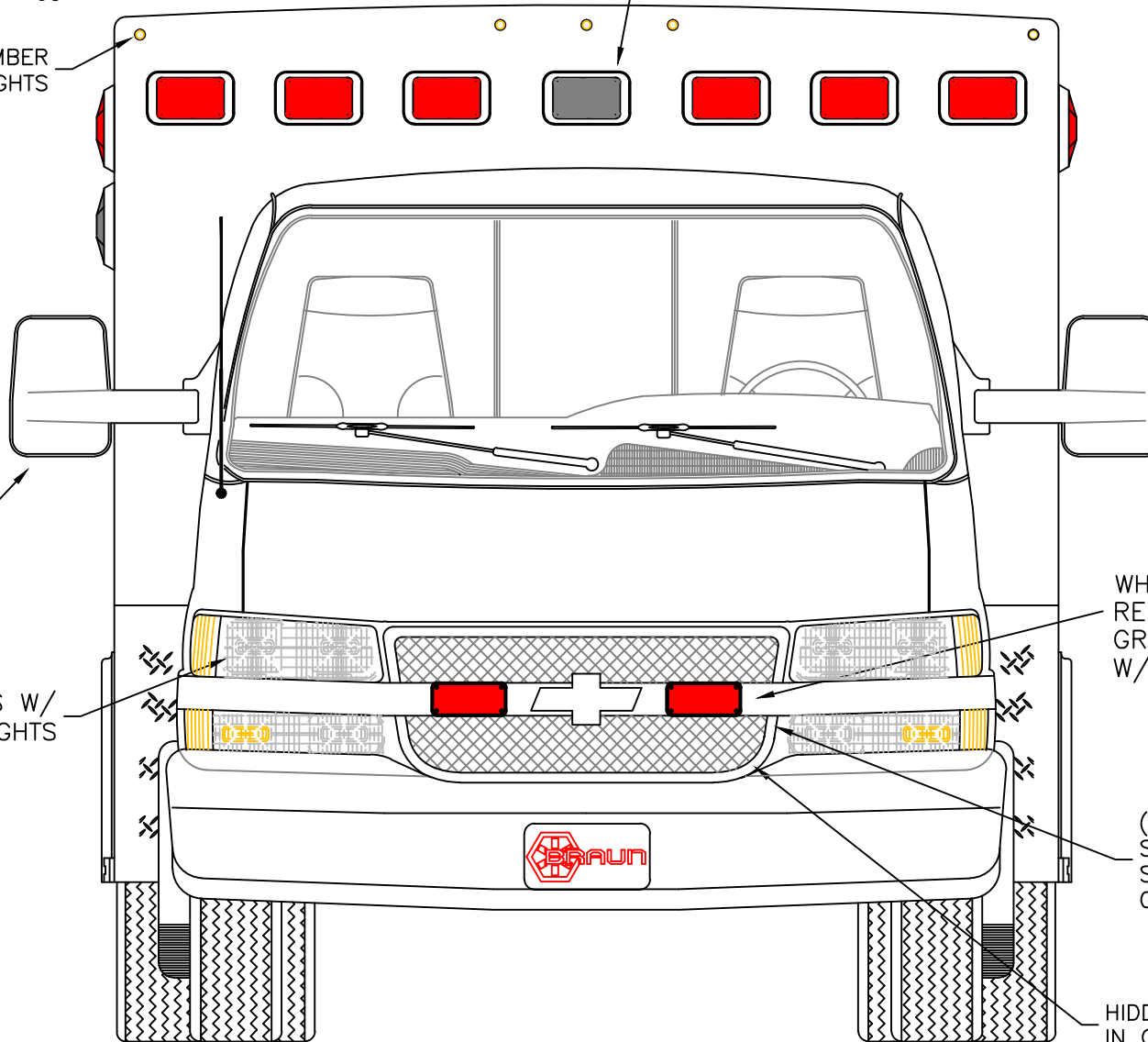
VELVAC 2020XG
 HEATED/REMOTE
 MIRRORS

FLASHING HEADLIGHTS W/
 DAYTIME RUNNING LIGHTS

WHELEN 700 SERIES
 RED SUPER LED
 GRILLE LIGHTS
 W/ CLEAR LENSES

(2) WHELEN SA315
 SERIES SIREN
 SPEAKERS BEHIND
 GRILLE AREA

HIDDEN UNLOCK SWITCH
 IN GRILLE AREA



THIS DRAWING IS FOR REPRESENTATIONAL PURPOSES ONLY. DETAILS ARE CONCEPTUAL AND ARE SUBJECT TO CHANGE DURING DESIGN AND CONSTRUCTION
 DIMENSIONS ARE APPROXIMATE UNLESS NOTED OTHERWISE TO MEET A SPECIFIC CUSTOMER NEED.

BRAUN
 SIGNATURE SERIES



2019 FRONT EXTERIOR VIEW
 SIGNATURE SERIES / CHEVY G3500 GAS CHASSIS

DATE:
 8-3-18

DRAWING NO.

DWG. AAB
 REV. NR

SIGNATURE-1

APPROVAL SIGNATURE:

DATE:

DIMENSIONS FOR OVERALL HEIGHT AND LENGTH ARE APPROXIMATE
 OVERALL HEIGHT = 100.25"
 OVERALL WIDTH WITH RUB
 RAILS & FENDERETTES = 95"

(5) WHELEN 600 SUPER LED WARNING LIGHTS WITH CLEAR LENSES,
 (2) WHELEN 600 CLEAR LED LOAD LIGHTS:
 RED / RED / LOAD / AMBER / LOAD / RED / RED

(5) TECNIQ S330 RED
 MINI-LED MARKER LIGHTS

(2) WHELEN 900 RED
 SUPER LED LIGHTS
 WITH CLEAR LENSES

LOCATION FOR
 DOOR GRABBERS

(1) EACH SIDE, WHELEN
 600 LED BRAKE/TAIL,
 600 LED TURN
 600 LED BACK-UP

LED LICENSE
 PLATE LIGHT

MUD FLAPS

INDEPENDENT BUMPER WITH
 NON-SKID FLIP-UP CENTER
 STEP AND COT PROTECTOR
 ON STEP EDGE.

THIS DRAWING IS FOR REPRESENTATIONAL PURPOSES ONLY. DETAILS ARE CONCEPTUAL AND ARE SUBJECT TO CHANGE DURING DESIGN AND CONSTRUCTION
 DIMENSIONS ARE APPROXIMATE UNLESS NOTED OTHERWISE TO MEET A SPECIFIC CUSTOMER NEED.

BRAUN
 SIGNATURE SERIES



2019 REAR EXTERIOR VIEW
 SIGNATURE SERIES

DATE:
 8-3-18

DRAWING NO.

DWG.
 AAB

REV.
 NR

SIGNATURE-2

DIMENSIONS FOR OVERALL HEIGHT AND LENGTH ARE APPROXIMATE
 OVERALL HEIGHT = 102.5"
 OVERALL LENGTH = 260"
 MODULE LENGTH = 150"

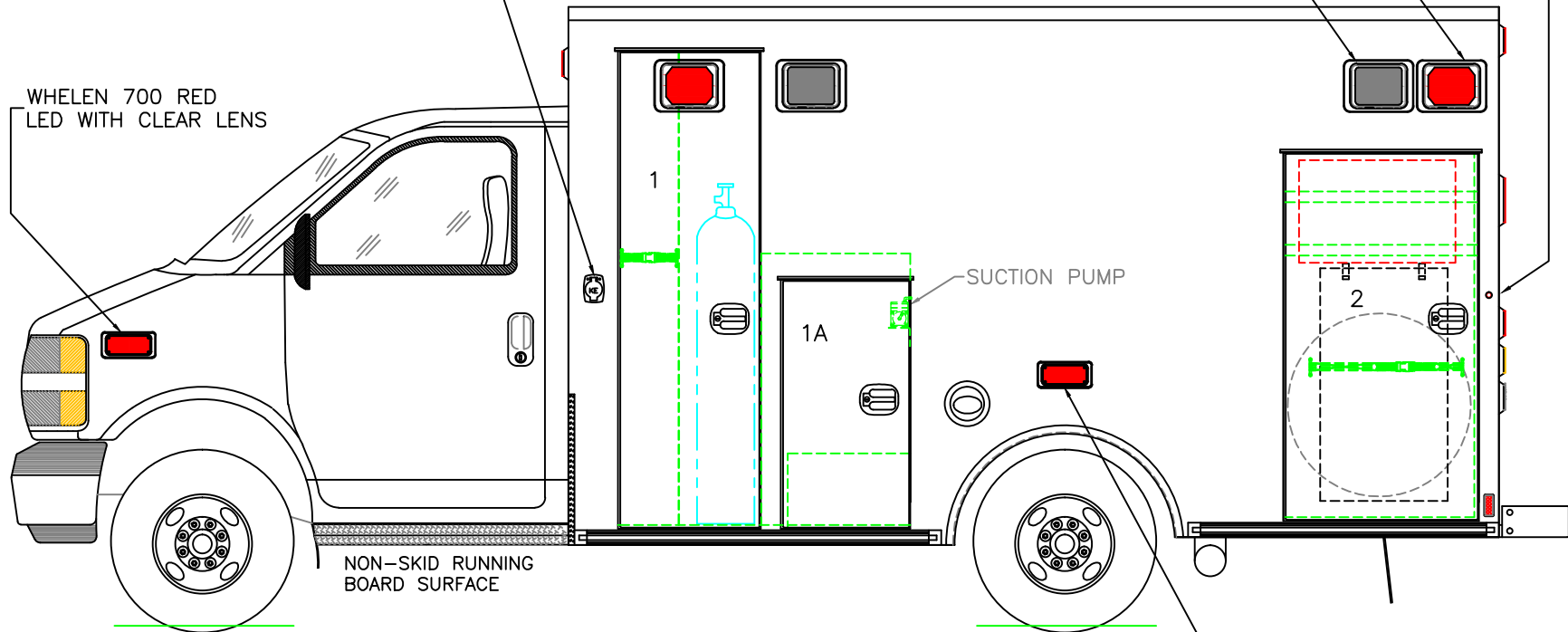
TECNIQ S330 RED MINI-LED MARKER LIGHT TO ALSO FLASH WITH TURN SIGNAL

KUSSMAUL 20 AMP AUTO-EJECT SHORELINE INLET

(2) WHELEN 900 RED SUPER LED WARNING LIGHTS WITH CLEAR LENSES

(2) WHELEN 900 24-DIODE LED SCENE LIGHTS

WHELEN 700 RED LED WITH CLEAR LENS



NON-SKID RUNNING BOARD SURFACE

SUCTION PUMP

WHELEN 700 RED SUPER LED WITH CLEAR LENS

COMPARTMENT
O.S.S #1

CLEAR OPENING: 75.00h x 19.25w
 INSIDE DIMS: 76.25h x 22.75w x 18.50d
 OXYGEN STORAGE ON RIGHT SIDE OF VERTICAL DIVIDER
 DIVIDER DEPTH = 8" TO ALLOW ALTERNATE STAIR CHAIR STORAGE OUTBOARD OF OXYGEN
 (1) STRAP ON LEFT SIDE OF DIVIDER
 OXYGEN BRACKET & DIVIDER TO BE BOLT-IN
 OSS & DOOR PREPPED TO HOLD THE EZ-O2 LIFT

O.S.S #2

CLEAR OPENING: 57.75h x 28.00w
 INSIDE DIM'S.: 59.50h x 31.25w x 18.50d
 INSIDE/OUTSIDE ACCESS
 (2) ADJUSTABLE SHELVES: UPPER=FULL DEPTH; LOWER=REDUCED DEPTH DUE TO STAIR CHAIR ON INSIDE OF DOOR
 MOUNTING HOOKS AND STRAP ON INSIDE OF DOOR FOR STRYKER 6252 OR FERNO EZ-GLIDE STAIR CHAIR
 OPTIONAL SPARE TIRE STORAGE (MOUNT NOT INCLUDED AS STANDARD)
 NOTE: STAIR CHAIR AND SPARE STORAGE WILL NOT FIT AT SAME TIME

O.S.S #1A

CLEAR OPENING: 38.75h x 17.50w
 INSIDE DIM'S.: 43.75h x 24.00w x 18.50d

THIS DRAWING IS FOR REPRESENTATIONAL PURPOSES ONLY. DETAILS ARE CONCEPTUAL AND ARE SUBJECT TO CHANGE DURING DESIGN AND CONSTRUCTION
 DIMENSIONS ARE APPROXIMATE UNLESS NOTED OTHERWISE TO MEET A SPECIFIC CUSTOMER NEED.

BRAUN
SIGNATURE SERIES

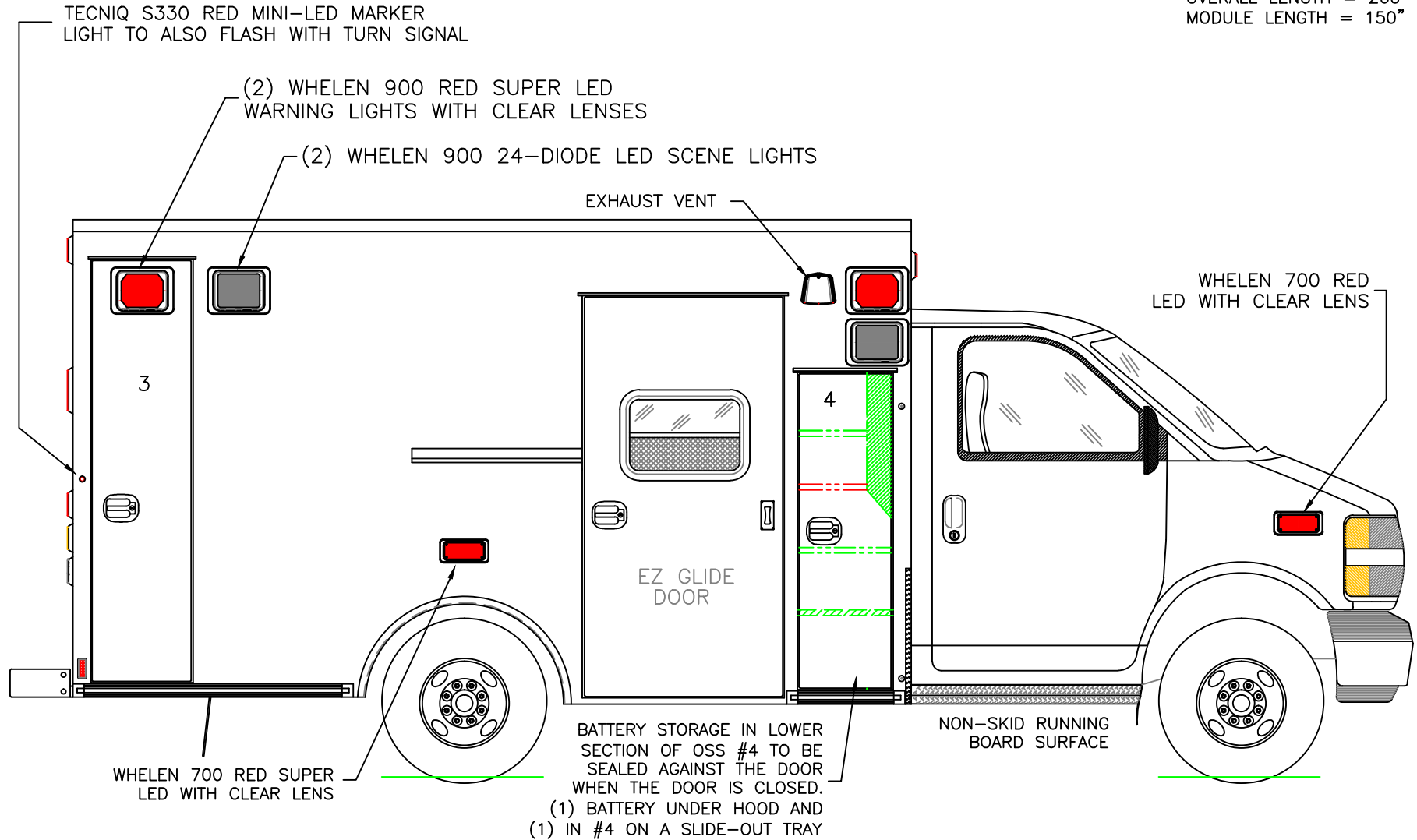


2019 STREETSIDE EXTERIOR VIEW
SIGNATURE SERIES / CHEVY G3500 CHASSIS

DATE:
8-3-18
DWG. AAB

DRAWING NO.
REV. NR
SIGNATURE-3

DIMENSIONS FOR OVERALL HEIGHT AND LENGTH ARE APPROXIMATE
 OVERALL HEIGHT = 102.5"
 OVERALL LENGTH = 260"
 MODULE LENGTH = 150"



O.S.S #3
 CLEAR OPENING: 73.75h x 15.00w
 INSIDE DIM'S.: 75.00h x 18.00w x 18.50d
 BACKBOARD/SCOOP STORAGE

O.S.S #4
 CLEAR OPENING: 54.75h x 15.50w
 INSIDE DIM'S.: SEE PARTITION INTERIOR VIEW
 INSIDE/OUTSIDE ACCESS

THIS DRAWING IS FOR REPRESENTATIONAL PURPOSES ONLY. DETAILS ARE CONCEPTUAL AND ARE SUBJECT TO CHANGE DURING DESIGN AND CONSTRUCTION
 DIMENSIONS ARE APPROXIMATE UNLESS NOTED OTHERWISE TO MEET A SPECIFIC CUSTOMER NEED.

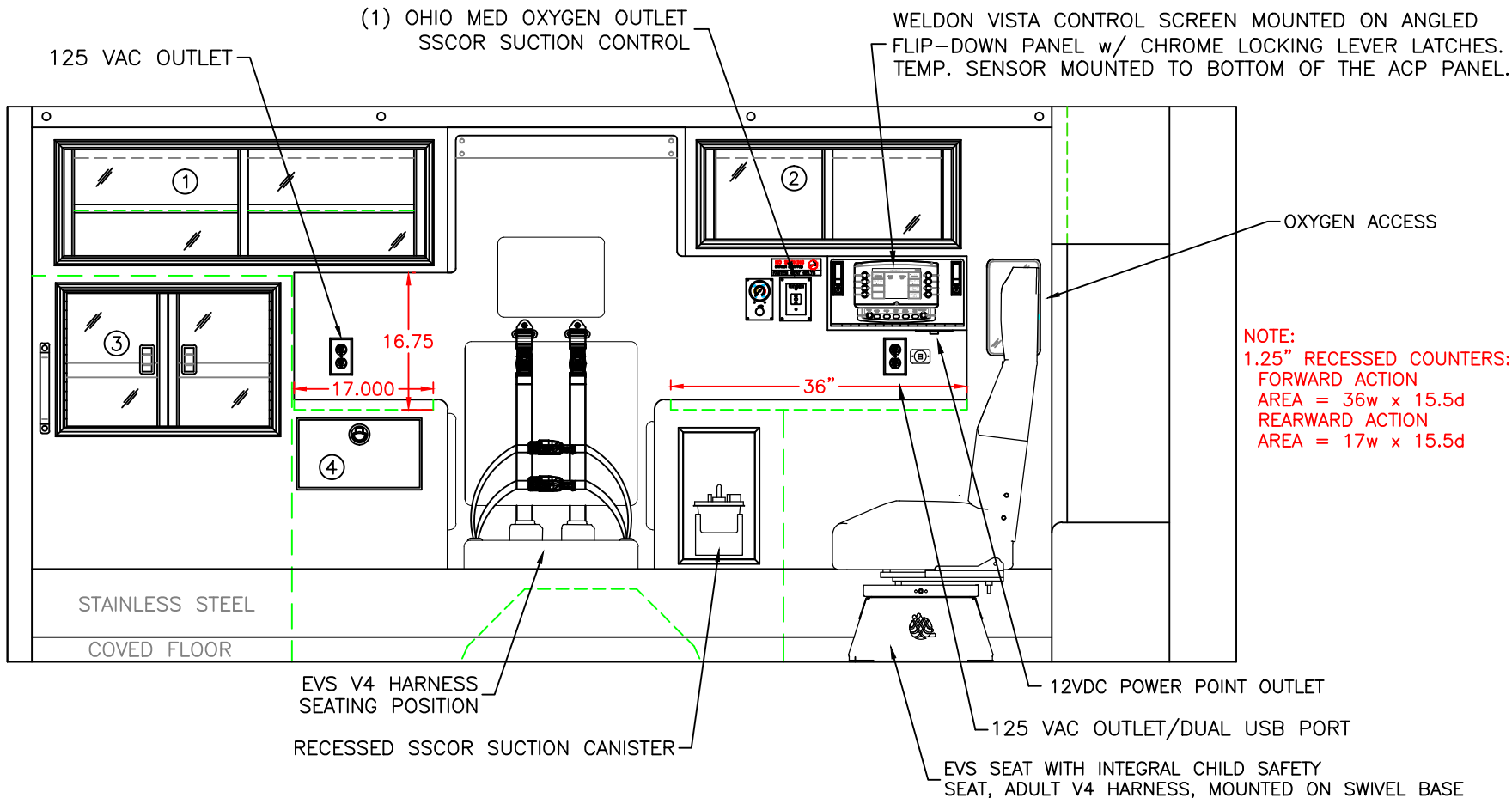
BRAUN
 SIGNATURE SERIES



2019 CURB EXTERIOR VIEW
 SIGNATURE SERIES / CHEVY G3500 CHASSIS

DATE:
 8-3-18
 DWG. AAB
 REV. NR

DRAWING NO.
 SIGNATURE-4



COMPARTMENT:

#1 DOOR OPENING: 13.00h x 44.00w
 INSIDE DIMS: 14.75h x 45.75w x 16.25d
 (1) ADJUSTABLE SHELF
 SLIDING POLYCARBONATE DOORS
 TOTAL CABINET WEIGHT RATING = 25 lbs.

#2 DOOR OPENING: 11.00h x 30.00w
 INSIDE DIMS: 12.75h x 31.75w x 16.25d
 SLIDING POLYCARBONATE DOORS
 TOTAL CABINET WEIGHT RATING = 25 lbs.

#3 DOOR OPENING: 16.50h x 24.50w
 INSIDE/OUTSIDE COMPARTMENT ACCESS
 HINGED POLYCARBONATE DOORS WITH FULL LENGTH HANDLES
 CENTER SQUEEZE LATCHES
 TOTAL CABINET WEIGHT RATING = 40 lbs.

#4 PULL-OUT DRAWER
 INSIDE DIMS: 7.00h x 13.25w x 15.75d
 LOCKING STAINLESS STEEL FLUSH PULL LATCH
 TOTAL DRAWER WEIGHT RATING = 10 lbs.

CABINETS TO BE ALUMINUM

THIS DRAWING IS FOR REPRESENTATIONAL PURPOSES ONLY. DETAILS ARE CONCEPTUAL AND ARE SUBJECT TO CHANGE DURING DESIGN AND CONSTRUCTION DIMENSIONS ARE APPROXIMATE UNLESS NOTED OTHERWISE TO MEET A SPECIFIC CUSTOMER NEED.

BRAUN
SIGNATURE SERIES

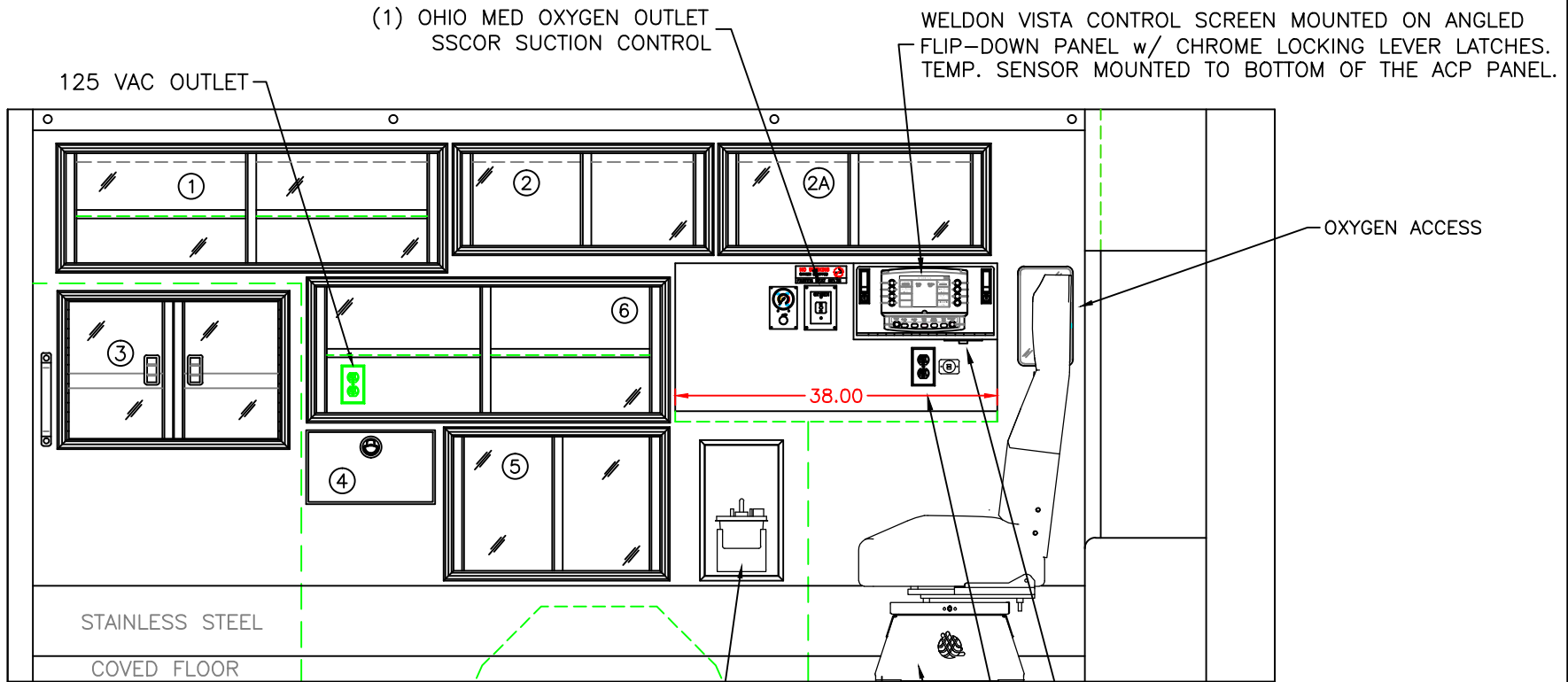


2019 STREETSIDE INTERIOR
SIGNATURE SERIES

DATE:
8-3-18
DWG.
AAB

REV.
NR

DRAWING NO.
SIGNATURE-5
WITH CPR SEAT



COMPARTMENT:

- #1 DOOR OPENING: 13.00h x 44.00w
INSIDE DIMS: 14.75h x 45.75w x 16.25d
(1) ADJUSTABLE SHELF
SLIDING POLYCARBONATE DOORS
TOTAL CABINET WEIGHT RATING = 25 lbs.
- #2 DOOR OPENING: 11.00h x 28.50w
INSIDE DIMS: 12.75h x 30.25w x 16.25d
SLIDING POLYCARBONATE DOORS
TOTAL CABINET WEIGHT RATING = 25 lbs.
- #2A DOOR OPENING: 11.00h x 30.00w
INSIDE DIMS: 12.75h x 31.75w x 16.25d
SLIDING POLYCARBONATE DOORS
TOTAL CABINET WEIGHT RATING = 25 lbs.

- #3 DOOR OPENING: 16.50h x 24.50w
INSIDE/OUTSIDE COMPARTMENT ACCESS
HINGED POLYCARBONATE DOORS WITH FULL LENGTH
HANDLES CENTER SQUEEZE LATCHES
TOTAL CABINET WEIGHT RATING = 40 lbs.
- #4 PULL-OUT DRAWER
INSIDE DIMS: 7.00h x 13.25w x 15.75d
LOCKING STAINLESS STEEL FLUSH PULL LATCH
TOTAL DRAWER WEIGHT RATING = 10 lbs.
- #5 DOOR OPENING: 15.75h x 24.25w
INSIDE DIMS: 17.50h x 26.00w x 16.25d
SLIDING POLYCARBONATE DOORS
TOTAL CABINET WEIGHT RATING = 25 lbs.

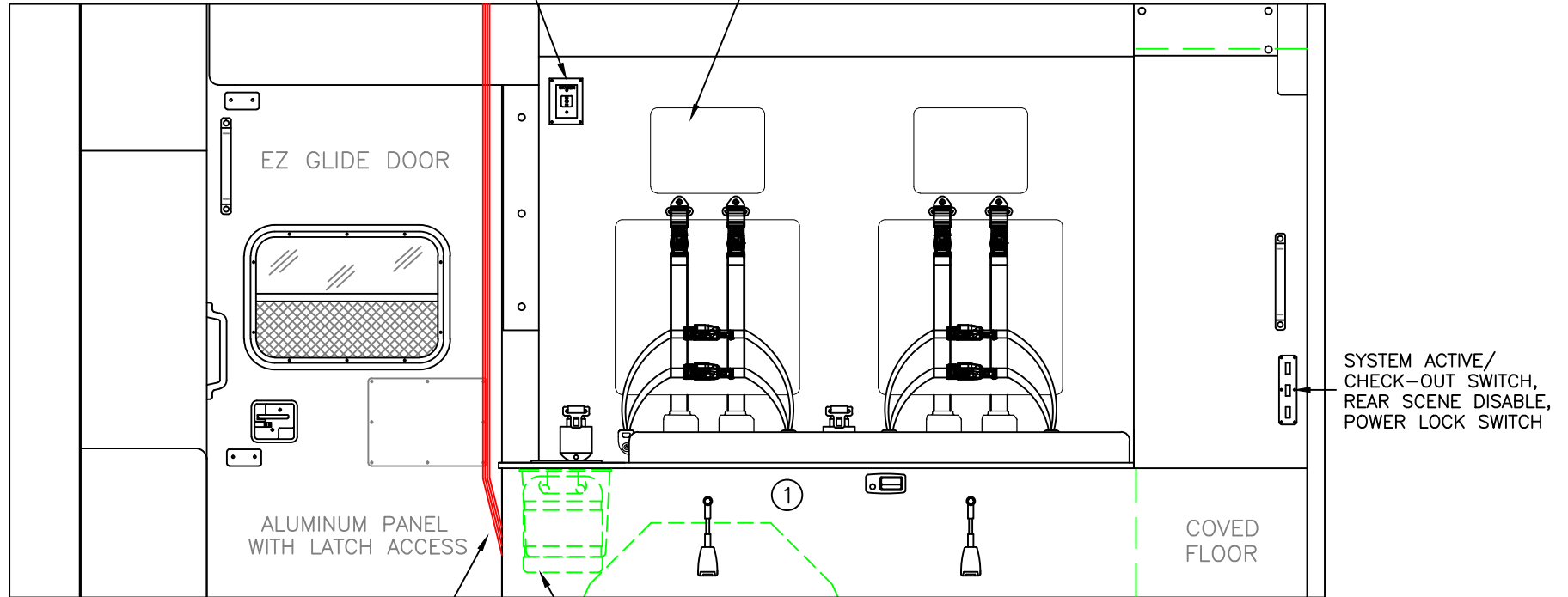
- #6 DOOR OPENING: 15.00h x 40.75w
INSIDE DIMS: 16.75h x 42.50w x 16.25d
(1) ADJUSTABLE SHELF
SLIDING POLYCARBONATE DOORS
TOTAL CABINET WEIGHT RATING = 25 lbs.

CABINETS TO BE ALUMINUM

THIS DRAWING IS FOR REPRESENTATIONAL PURPOSES ONLY. DETAILS ARE CONCEPTUAL AND ARE SUBJECT TO CHANGE DURING DESIGN AND CONSTRUCTION DIMENSIONS ARE APPROXIMATE UNLESS NOTED OTHERWISE TO MEET A SPECIFIC CUSTOMER NEED.

(1) OHIO MED OXYGEN OUTLET

(2) EVS V4 HARNESS SEATING POSITIONS. RETRACTORS INSTALLED FOR SECOND PATIENT TRANSPORT.



ATTENDANT NET

SHARPS/TRASH DISPOSAL THROUGH HINGED ACRYLIC LID

SYSTEM ACTIVE/
CHECK-OUT SWITCH,
REAR SCENE DISABLE,
POWER LOCK SWITCH

COMPARTMENT

#1 INSIDE DIMS: 15.50h x 72.00w x 18.50d

CABINETS TO BE ALUMINUM

THIS DRAWING IS FOR REPRESENTATIONAL PURPOSES ONLY. DETAILS ARE CONCEPTUAL AND ARE SUBJECT TO CHANGE DURING DESIGN AND CONSTRUCTION DIMENSIONS ARE APPROXIMATE UNLESS NOTED OTHERWISE TO MEET A SPECIFIC CUSTOMER NEED.

BRAUN
SIGNATURE SERIES

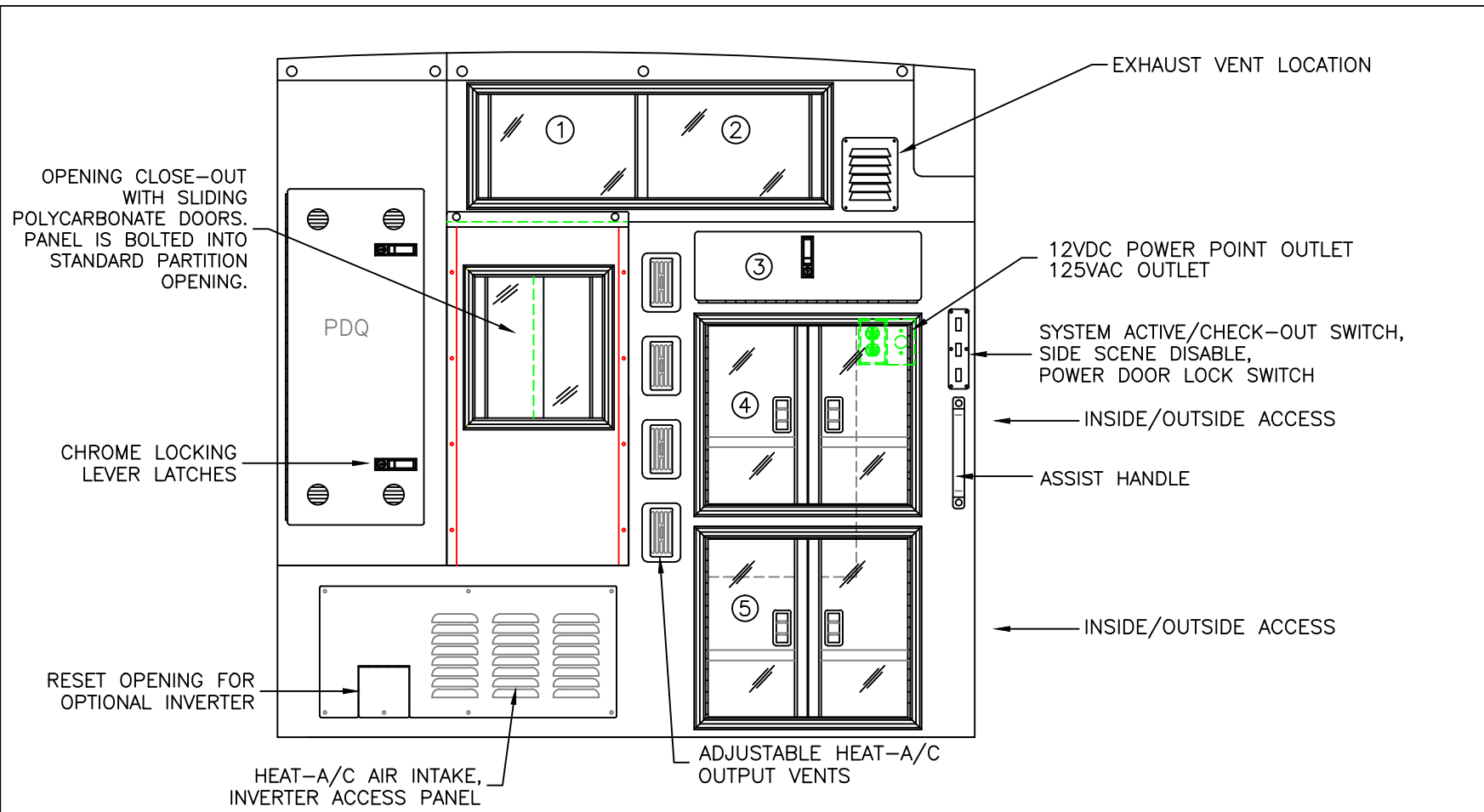


2019 CURBSIDE INTERIOR VIEW
SIGNATURE SERIES

DATE:
8-3-18

DWG. AAB REV. NR

DRAWING NO.
SIGNATURE-6



COMPARTMENT

#1/#2 DOOR OPENING: 10.25h x 34.00w
 INSIDE DIMS: 13.25h x 35.75w x 13.25d
 PERMANENT DIVIDER(CENTERED)
 SLIDING POLYCARBONATE DOORS
 TOTAL CABINET WEIGHT RATING = 25 lbs.

#3 DROP-DOWN HINGED ALUMINUM DOOR
 WITH CHROME LOCKING LEVER LATCH
 OPENING DIMS: 6.50h x 22.00w
 INSIDE DIMS: 7.50h x 22.00w x 14.25d
 TOTAL CABINET WEIGHT RATING = 15 lbs.

#4, #5 DOOR OPENINGS: 17.75h x 20.00w
 INSIDE DIMS: 19.25h x 28.00w x 13.25d
 HINGED POLYCARBONATE DOORS WITH FULL LENGTH HANDLES
 CENTER SQUEEZE LATCHES
 (1) ADJUSTABLE SHELF PER COMPARTMENT
 TOTAL CABINET WEIGHT RATING = 60 lbs. EACH

CABINETS TO BE ALUMINUM

THIS DRAWING IS FOR REPRESENTATIONAL PURPOSES ONLY. DETAILS ARE CONCEPTUAL AND ARE SUBJECT TO CHANGE DURING DESIGN AND CONSTRUCTION DIMENSIONS ARE APPROXIMATE UNLESS NOTED OTHERWISE TO MEET A SPECIFIC CUSTOMER NEED.

BRAUN
SIGNATURE SERIES

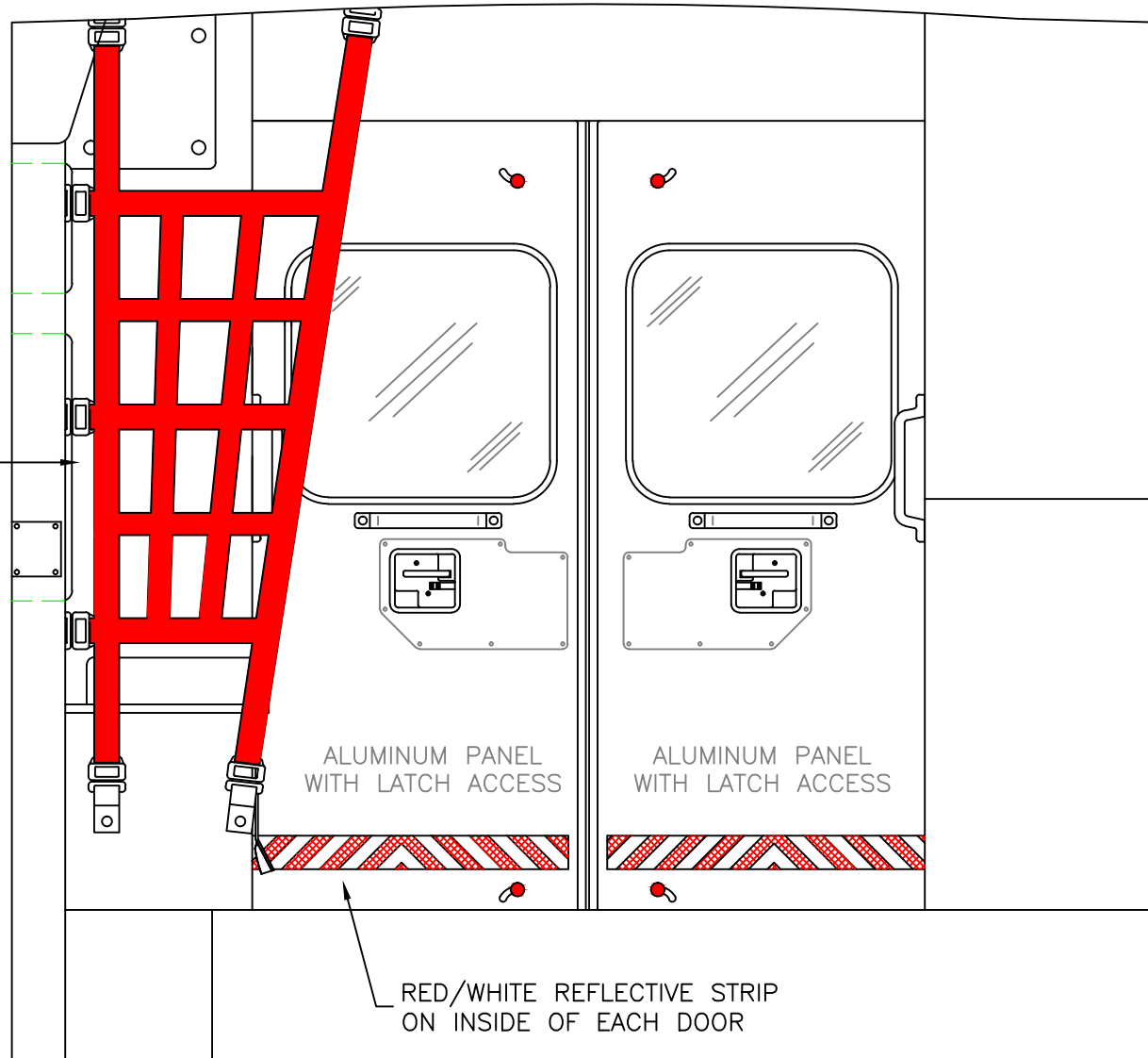


2019 PARTITION INTERIOR VIEW
SIGNATURE SERIES

DATE:
8-3-18
DWG. AAB

DRAWING NO.
REV. NR
SIGNATURE-7

ATTENDANT
NET



THIS DRAWING IS FOR REPRESENTATIONAL PURPOSES ONLY. DETAILS ARE CONCEPTUAL AND ARE SUBJECT TO CHANGE DURING DESIGN AND CONSTRUCTION DIMENSIONS ARE APPROXIMATE UNLESS NOTED OTHERWISE TO MEET A SPECIFIC CUSTOMER NEED.

BRAUN
SIGNATURE SERIES

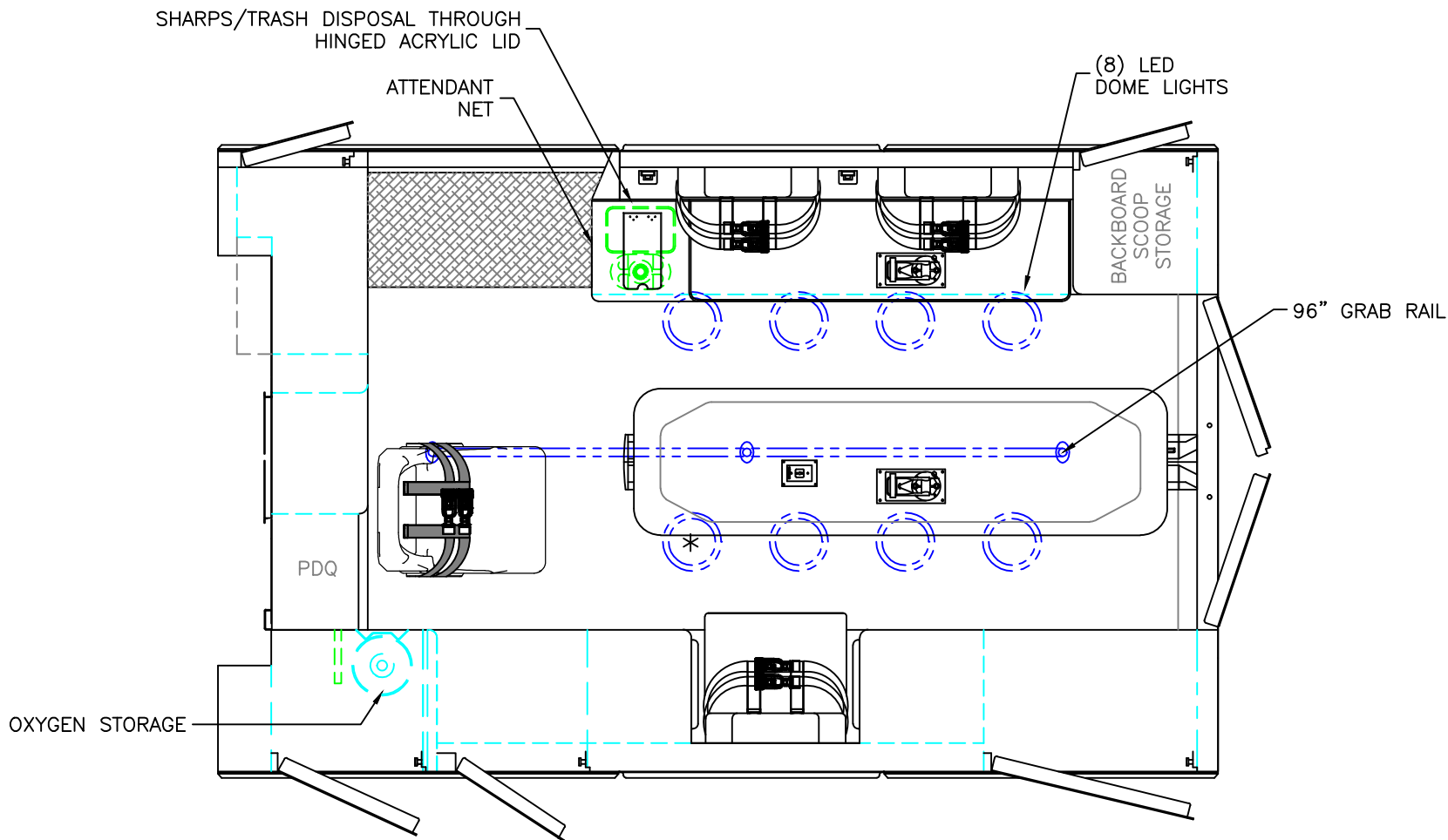


2019 REAR INTERIOR VIEW
SIGNATURE SERIES

DATE:
8-3-18

DWG. AAB REV. NR

DRAWING NO.
SIGNATURE-8



* (1) ANTENNA BASE LOCATED OUTBOARD OF DOME LIGHT WITH COAX SERVICE LOOP

86" FERNO STAT-TRAC CENTER MOUNT COT HARDWARE

 = (2) RECESSED CAST PRODUCTS CEILING IV HANGERS

 = (1) CEILING OXYGEN OUTLET

HEAD ROOM = 68"

OVERALL WIDTH WITH RUB

RAILS & FENDERETTES = 95"

MODULE LENGTH = 150"

THIS DRAWING IS FOR REPRESENTATIONAL PURPOSES ONLY. DETAILS ARE CONCEPTUAL AND ARE SUBJECT TO CHANGE DURING DESIGN AND CONSTRUCTION DIMENSIONS ARE APPROXIMATE UNLESS NOTED OTHERWISE TO MEET A SPECIFIC CUSTOMER NEED.

BRAUN
SIGNATURE SERIES

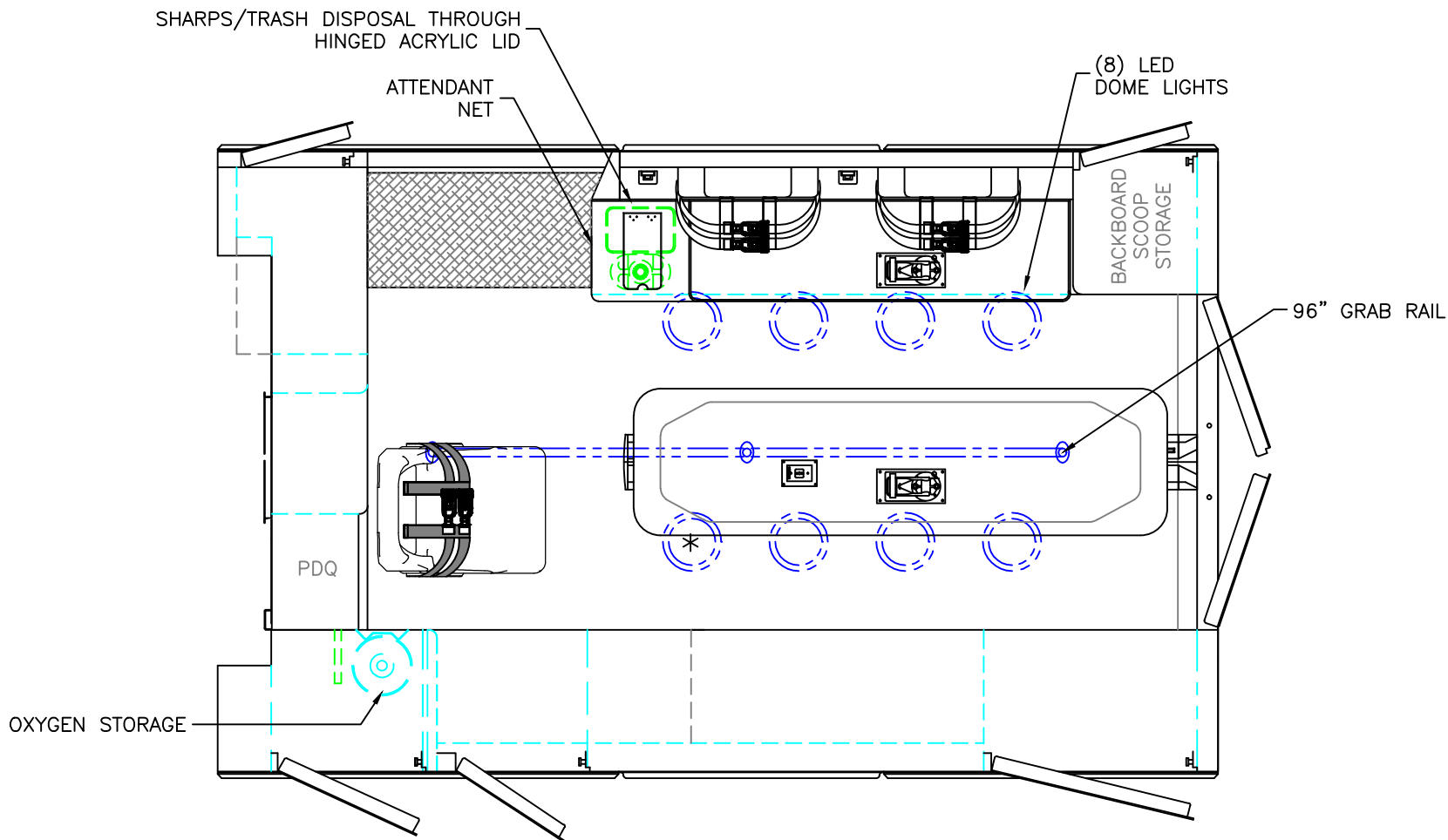


2019 FLOOR VIEW
SIGNATURE SERIES

DATE:
8-3-18
DWG.
AAB

REV.
NR

DRAWING NO.
SIGNATURE-9
WITH CPR SEAT



* (1) ANTENNA BASE LOCATED OUTBOARD OF DOME LIGHT WITH COAX SERVICE LOOP

86" FERNO STAT-TRAC CENTER MOUNT COT HARDWARE

 = (2) RECESSED CAST PRODUCTS CEILING IV HANGERS

 = (1) CEILING OXYGEN OUTLET

HEAD ROOM = 68"

OVERALL WIDTH WITH RUB

RAILS & FENDERETTES = 95"

MODULE LENGTH = 150"

THIS DRAWING IS FOR REPRESENTATIONAL PURPOSES ONLY. DETAILS ARE CONCEPTUAL AND ARE SUBJECT TO CHANGE DURING DESIGN AND CONSTRUCTION DIMENSIONS ARE APPROXIMATE UNLESS NOTED OTHERWISE TO MEET A SPECIFIC CUSTOMER NEED.

BRAUN
SIGNATURE SERIES



2019 FLOOR VIEW
SIGNATURE SERIES

DATE:
8-3-18
DWG.
AAB

REV.
NR

DRAWING NO.
SIGNATURE-9
NO CPR SEAT