

DIMENSIONS FOR OVERALL HEIGHT AND LENGTH ARE APPROXIMATE

OVERALL HEIGHT = 102.5"  
OVERALL WIDTH WITH RUB  
RAILS & FENDERETTES = 95"

(7) WHELEN 600 SUPER LED WITH CLEAR LENSES  
RED / RED / RED / WHITE / RED / RED / RED

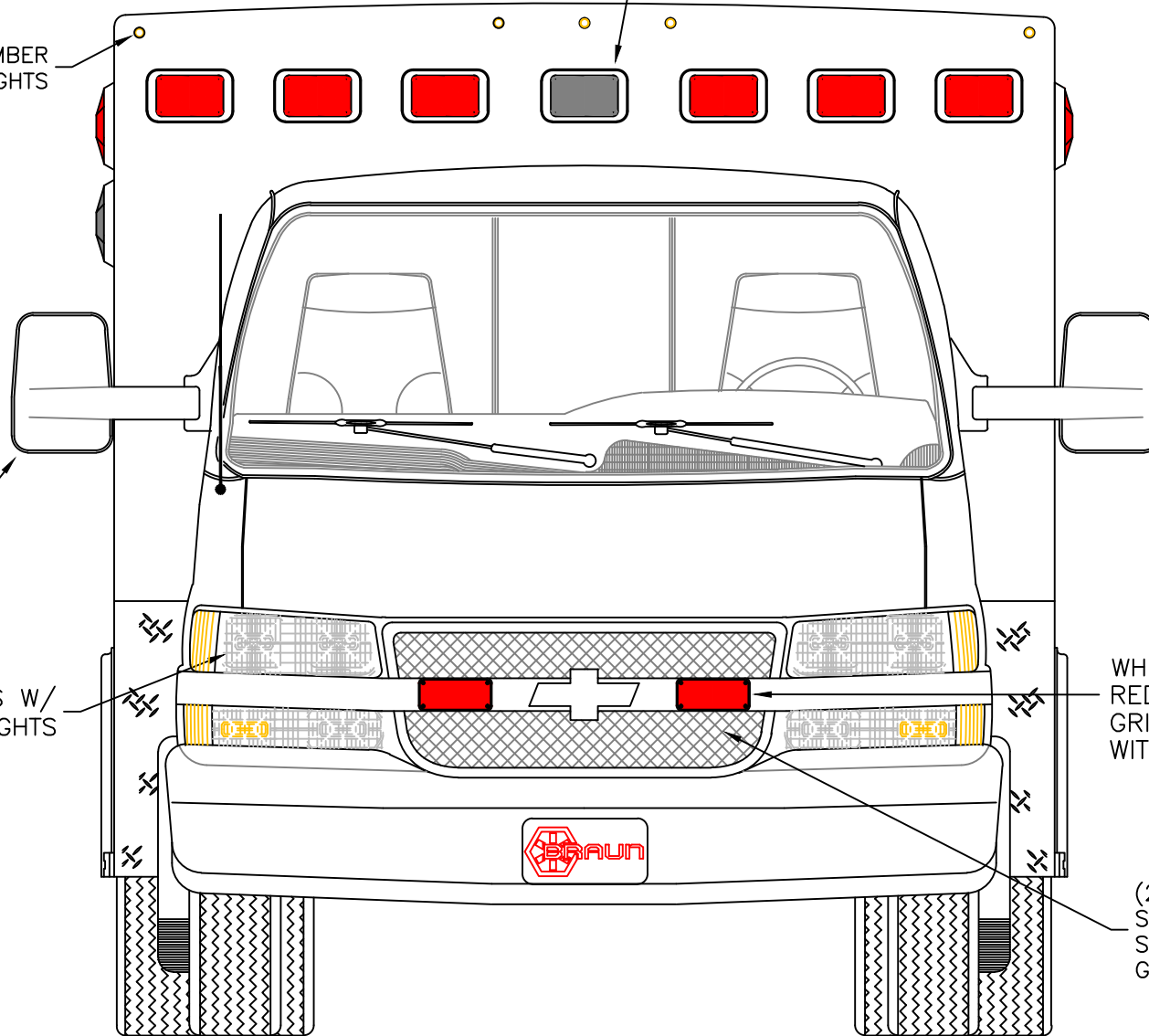
(5) TECNIQ S330 AMBER  
MINI-LED MARKER LIGHTS

VELVAC 2020XG  
HEATED/REMOTE  
MIRRORS

FLASHING HEADLIGHTS W/  
DAYTIME RUNNING LIGHTS

WHELEN 700 SERIES  
RED SUPER LED  
GRILLE LIGHTS  
WITH CLEAR LENSES

(2) WHELEN SA315  
SERIES SIREN  
SPEAKERS BEHIND  
GRILLE AREA



THIS DRAWING IS FOR REPRESENTATIONAL PURPOSES ONLY. DETAILS ARE CONCEPTUAL AND ARE SUBJECT TO CHANGE DURING DESIGN AND CONSTRUCTION  
DIMENSIONS ARE APPROXIMATE UNLESS NOTED OTHERWISE TO MEET A SPECIFIC CUSTOMER NEED.

BRAUN  
EXPRESS



2019 FRONT EXTERIOR VIEW  
EXPRESS-III/G-3500 GAS CHASSIS

DATE:  
8-3-18

DRAWING NO.

DWG. AAB  
REV. NR

EXPRESS-1

APPROVAL SIGNATURE:

DATE:

DIMENSIONS FOR OVERALL HEIGHT AND LENGTH ARE APPROXIMATE  
 OVERALL HEIGHT = 102.5"  
 OVERALL WIDTH WITH RUB  
 RAILS & FENDERETTES = 95"

(5) WHELEN 600 SUPER LED WARNING LIGHTS WITH CLEAR LENSES,  
 (2) WHELEN 600 CLEAR LED LOAD LIGHTS:  
 RED / RED / LOAD / AMBER / LOAD / RED / RED

(5) TECNIQ S330 RED  
 MINI-LED MARKER LIGHTS

EXHAUST VENT

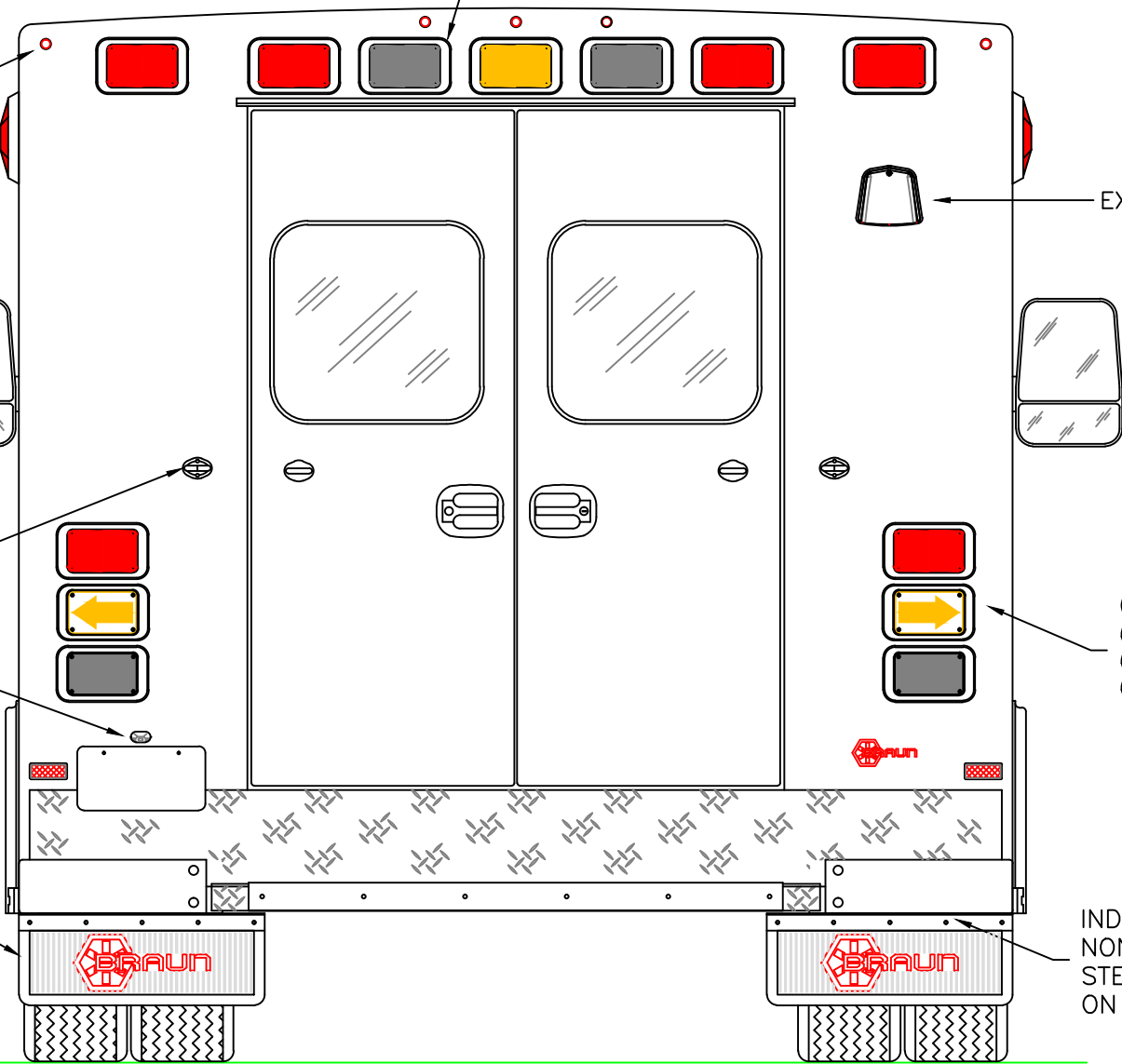
LOCATION FOR  
 DOOR GRABBERS

(1) EACH SIDE, WHELEN  
 600 LED BRAKE/TAIL,  
 600 LED TURN  
 600 LED BACK-UP

LED LICENSE  
 PLATE LIGHT

MUD FLAPS

INDEPENDENT BUMPER WITH  
 NON-SKID FLIP-UP CENTER  
 STEP AND COT PROTECTOR  
 ON STEP EDGE



THIS DRAWING IS FOR REPRESENTATIONAL PURPOSES ONLY. DETAILS ARE CONCEPTUAL AND ARE SUBJECT TO CHANGE DURING DESIGN AND CONSTRUCTION  
 DIMENSIONS ARE APPROXIMATE UNLESS NOTED OTHERWISE TO MEET A SPECIFIC CUSTOMER NEED.

BRAUN  
 EXPRESS



2019 REAR EXTERIOR VIEW  
 EXPRESS-III

DATE:  
 8-3-18

DWG. AAB REV. NR

DRAWING NO.

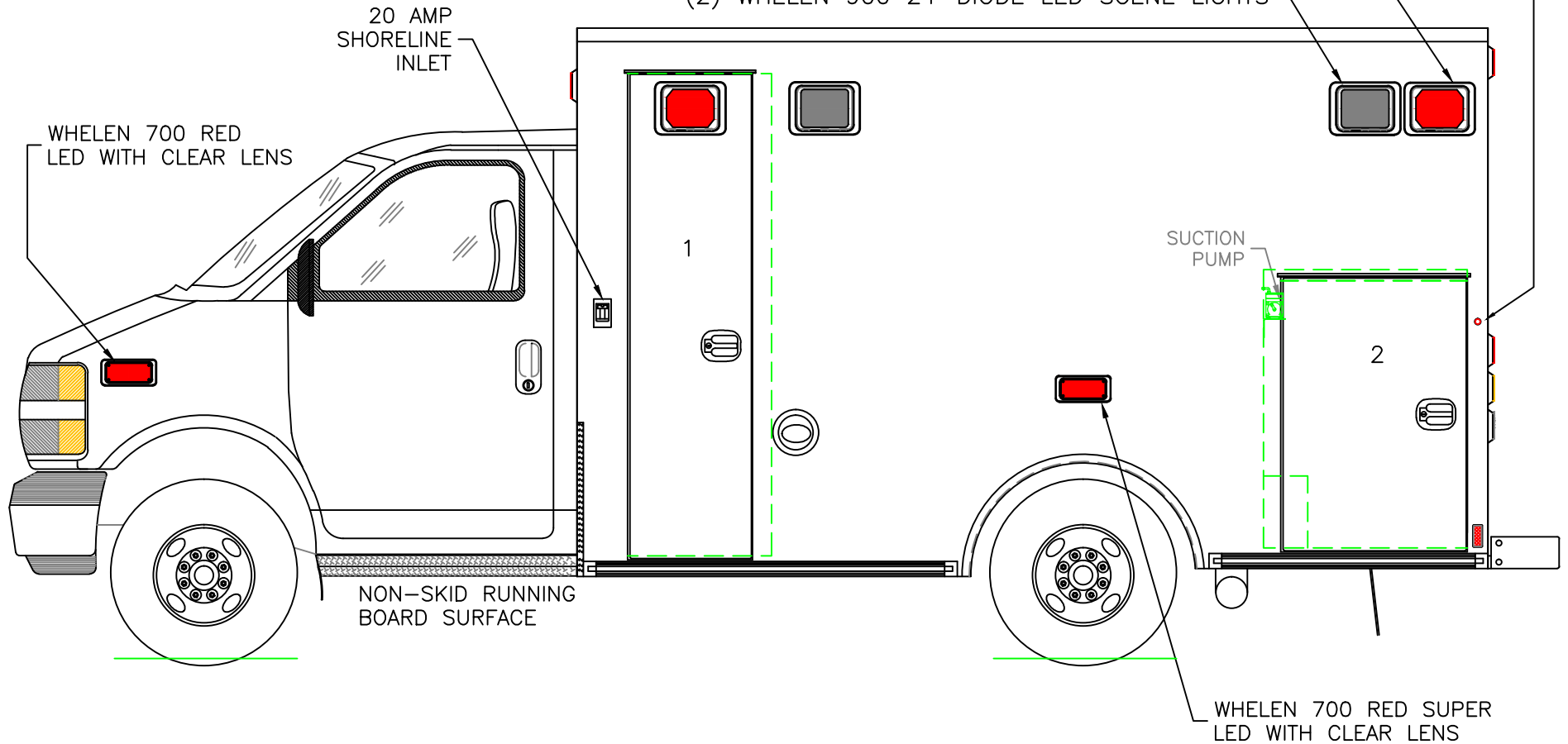
EXPRESS-2

DIMENSIONS FOR OVERALL HEIGHT AND LENGTH ARE APPROXIMATE  
 OVERALL HEIGHT = 102.5"  
 OVERALL LENGTH = 254"  
 MODULE LENGTH = 144"

TECNIQ S330 RED MINI-LED MARKER LIGHT TO ALSO FLASH WITH TURN SIGNAL

(2) WHELEN 900 RED SUPER LED WARNING LIGHTS WITH CLEAR LENSES

(2) WHELEN 900 24-DIODE LED SCENE LIGHTS



COMPARTMENT

O.S.S #1

CLEAR OPENING: 75.25h x 16.00w  
 INSIDE DIMS: 76.25h x 22.75w x 18.50d  
 BACKBOARD/SCOOP STORAGE

O.S.S #2

CLEAR OPENING: 42.25h x 26.00w  
 INSIDE DIM'S.: 44.00h x 32.25w x 18.50d

THIS DRAWING IS FOR REPRESENTATIONAL PURPOSES ONLY. DETAILS ARE CONCEPTUAL AND ARE SUBJECT TO CHANGE DURING DESIGN AND CONSTRUCTION  
 DIMENSIONS ARE APPROXIMATE UNLESS NOTED OTHERWISE TO MEET A SPECIFIC CUSTOMER NEED.

BRAUN  
EXPRESS

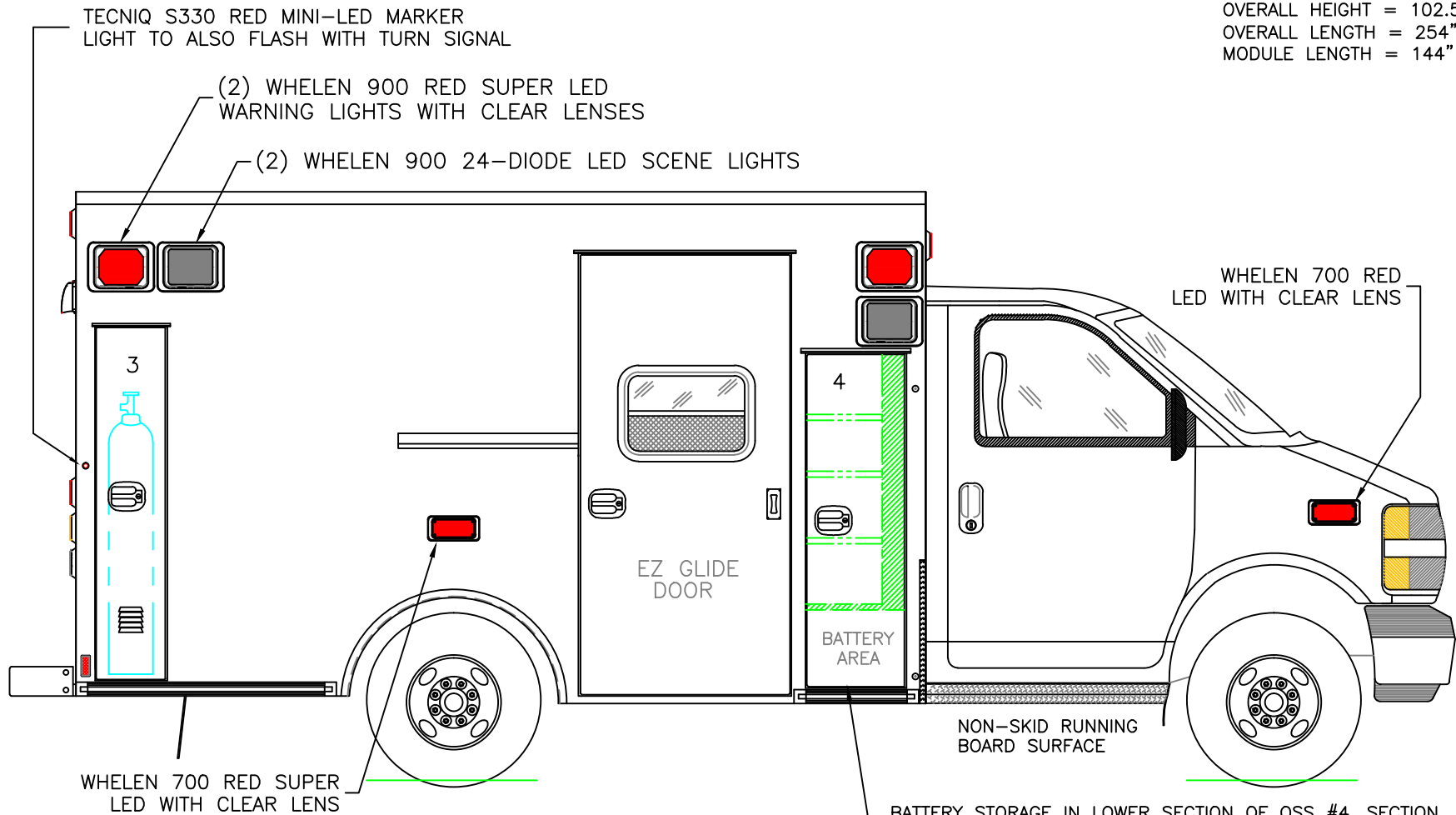


2019 STREETSIDE EXTERIOR VIEW  
 EXPRESS-III/G-3500 GAS CHASSIS

DATE:  
8-3-18  
DWG.  
AAB

REV.  
NR  
DRAWING NO.  
EXPRESS-3

DIMENSIONS FOR OVERALL HEIGHT AND LENGTH ARE APPROXIMATE  
 OVERALL HEIGHT = 102.5"  
 OVERALL LENGTH = 254"  
 MODULE LENGTH = 144"



WHELEN 700 RED SUPER LED WITH CLEAR LENS

BATTERY STORAGE IN LOWER SECTION OF OSS #4. SECTION TO BE SEALED AGAINST THE DOOR WHEN THE DOOR IS CLOSED. (1) BATTERY UNDER HOOD AND (1) IN #4 ON A SLIDE-OUT TRAY.

O.S.S #3  
 CLEAR OPENING: 58.50h x 9.50w  
 INSIDE DIM'S.: 59.25h x 12.00w x 15.00d  
 OXYGEN COMPARTMENT FOR "M" OR "H" CYLINDER

O.S.S #4  
 CLEAR OPENING: 54.75h x 15.50w  
 INSIDE DIM'S.: SEE PARTITION INTERIOR VIEW  
 INSIDE/OUTSIDE ACCESS

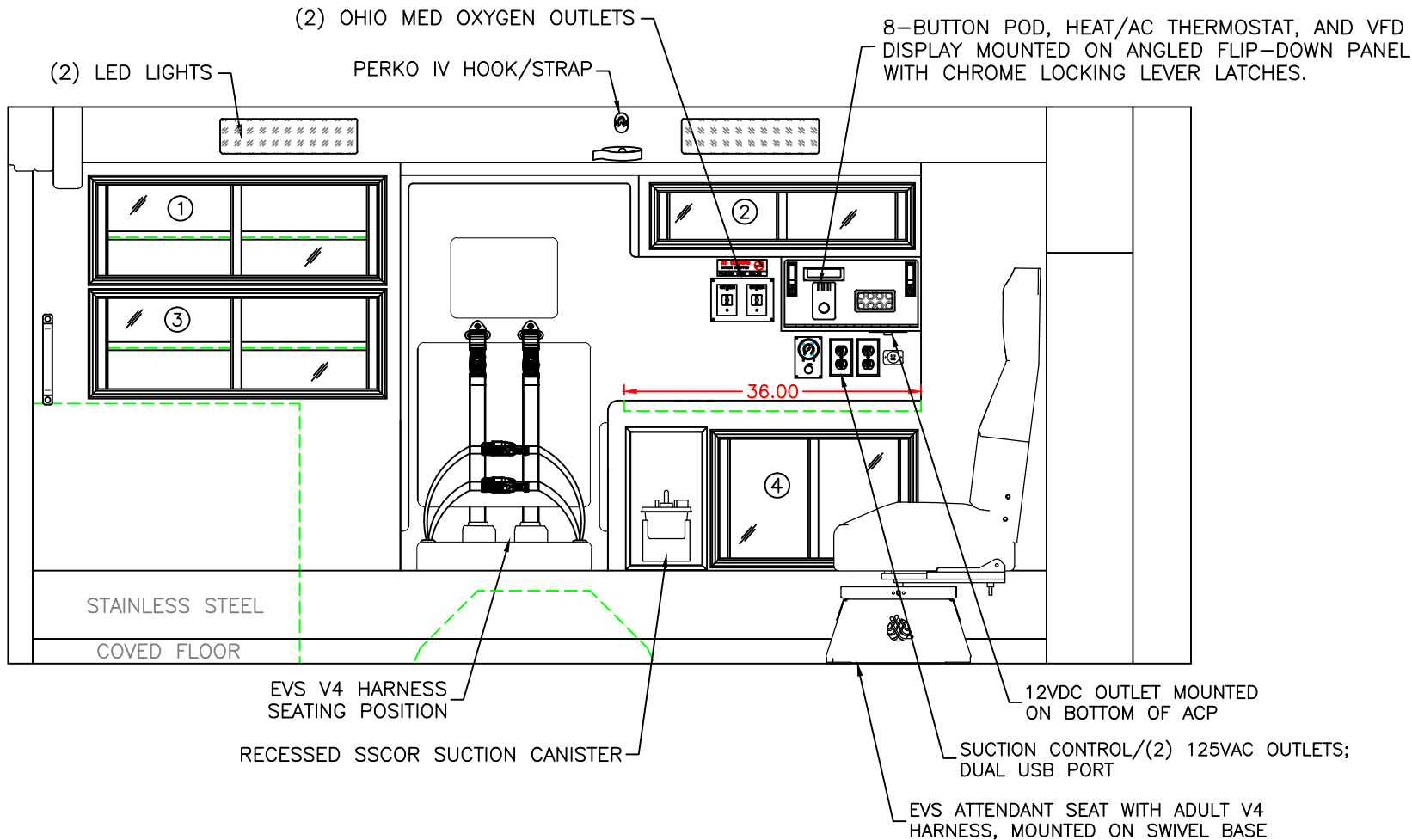
THIS DRAWING IS FOR REPRESENTATIONAL PURPOSES ONLY. DETAILS ARE CONCEPTUAL AND ARE SUBJECT TO CHANGE DURING DESIGN AND CONSTRUCTION DIMENSIONS ARE APPROXIMATE UNLESS NOTED OTHERWISE TO MEET A SPECIFIC CUSTOMER NEED.

BRAUN EXPRESS



2019 CURBSIDE EXTERIOR VIEW  
 EXPRESS-III/G-3500 GAS CHASSIS

DATE: 8-3-18	DRAWING NO. EXPRESS-4
DWG. AAB	REV. NR



COMPARTMENT:

- #1 DOOR OPENING: 11.00h x 34.00w  
INSIDE DIMS: 12.50h x 35.75w x 16.25d  
(1) ADJUSTABLE SHELF  
SLIDING POLYCARBONATE DOORS  
TOTAL CABINET WEIGHT RATING = 25 lbs.
- #2 DOOR OPENING: 5.75h x 30.00w  
INSIDE DIMS: 8.50h x 31.75w x 15.00d  
SLIDING POLYCARBONATE DOORS  
TOTAL CABINET WEIGHT RATING = 15 lbs.

- #3 DOOR OPENING: 11.00h x 34.00w  
INSIDE DIMS: 12.50h x 35.75w x 16.25d  
(1) ADJUSTABLE SHELF  
SLIDING POLYCARBONATE DOORS  
TOTAL CABINET WEIGHT RATING = 25 lbs.
- #4 DOOR OPENING: 14.50h x 23.00w  
INSIDE DIMS: 16.00h x 24.50w x 16.25d  
SLIDING POLYCARBONATE DOORS  
TOTAL CABINET WEIGHT RATING = 20 lbs.

CABINETS TO BE ALUMINUM

THIS DRAWING IS FOR REPRESENTATIONAL PURPOSES ONLY. DETAILS ARE CONCEPTUAL AND ARE SUBJECT TO CHANGE DURING DESIGN AND CONSTRUCTION DIMENSIONS ARE APPROXIMATE UNLESS NOTED OTHERWISE TO MEET A SPECIFIC CUSTOMER NEED.

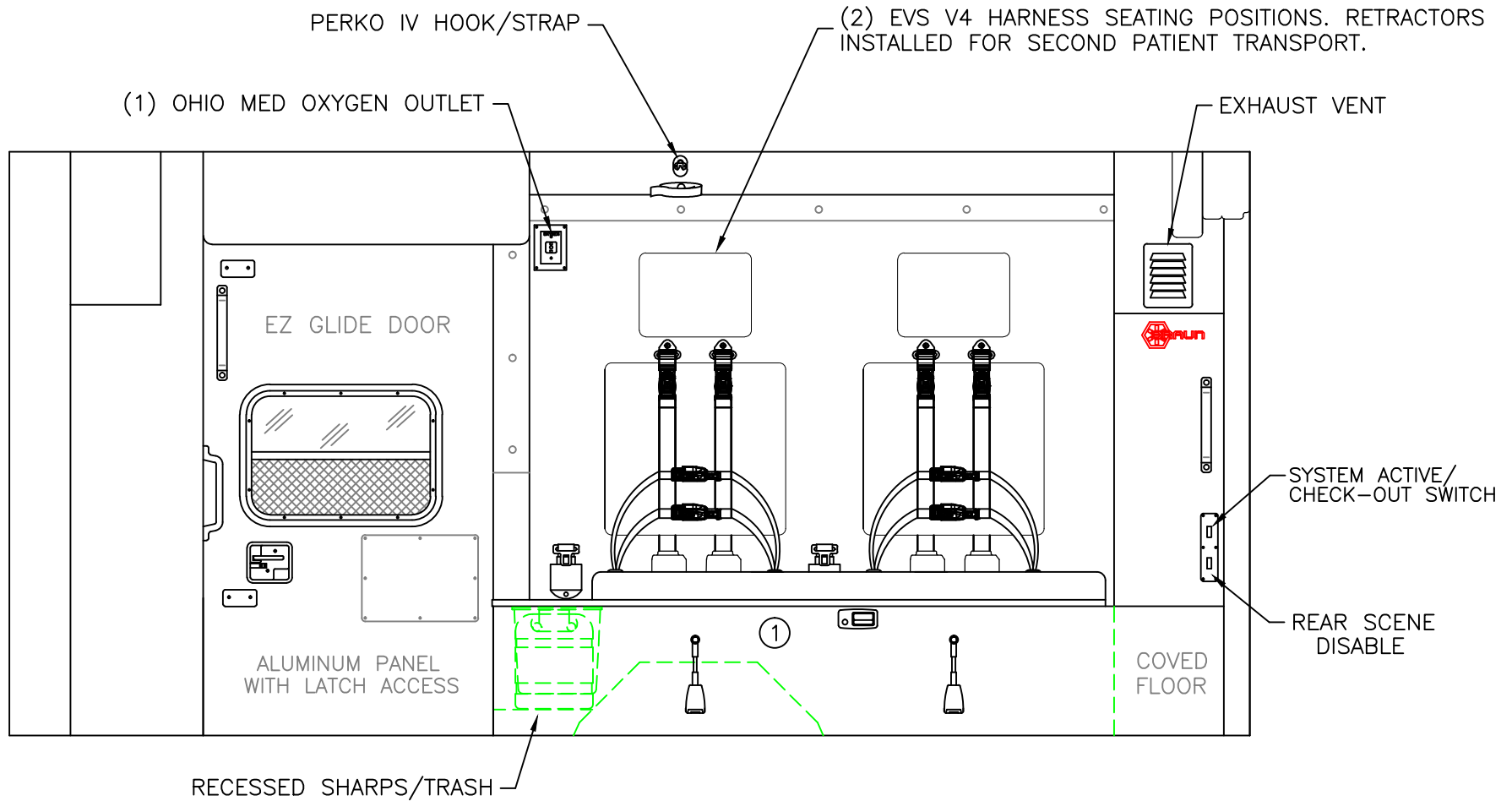
BRAUN  
EXPRESS



2019 STREETSIDE INTERIOR  
EXPRESS-III

DATE: 8-3-18	DWG. AAB	REV. NR
-----------------	-------------	------------

DRAWING NO. EXPRESS-5
--------------------------



COMPARTMENT  
 #1 INSIDE DIMS: 15.50h x 72.00w x 18.50d

CABINETS TO BE ALUMINUM

THIS DRAWING IS FOR REPRESENTATIONAL PURPOSES ONLY. DETAILS ARE CONCEPTUAL AND ARE SUBJECT TO CHANGE DURING DESIGN AND CONSTRUCTION  
 DIMENSIONS ARE APPROXIMATE UNLESS NOTED OTHERWISE TO MEET A SPECIFIC CUSTOMER NEED.

BRAUN  
 EXPRESS

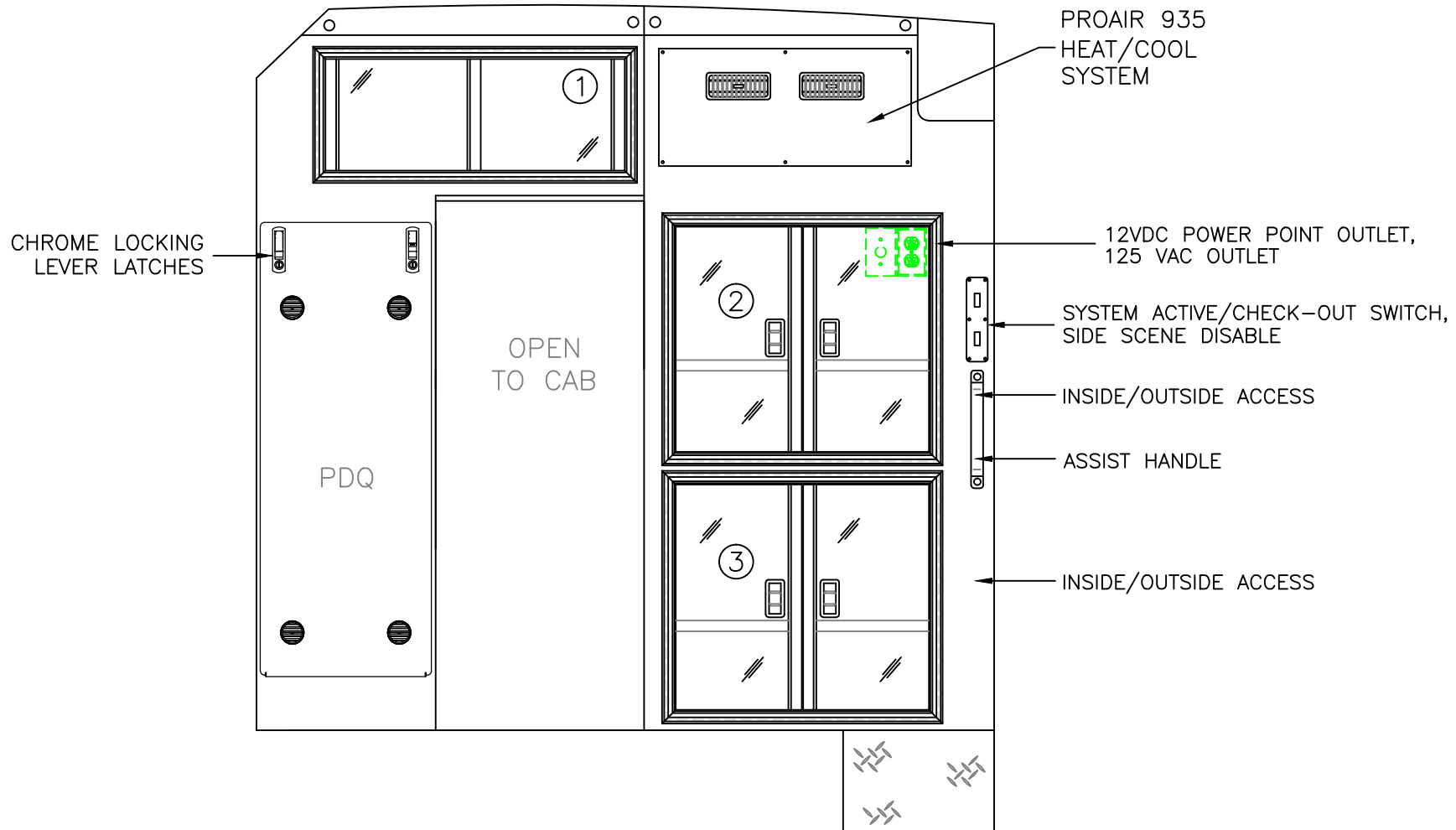


2019 CURBSIDE INTERIOR VIEW  
 EXPRESS-III

DATE:  
 8-3-18

DWG. AAB | REV. NR

DRAWING NO.  
 EXPRESS-6



COMPARTMENT

#1 DOOR OPENING: 10.50h x 28.00w  
 INSIDE DIMS: 12.25h x 29.75w x 6.50d  
 SLIDING POLYCARBONATE DOORS  
 TOTAL CABINET WEIGHT RATING = 20 lbs.

#2/#3 OPENING: 21.25h x 23.75w  
 INSIDE DIMS: 23.00h x 31.25w x 13.25d  
 (1) ADJUSTABLE SHELF PER CABINET  
 HINGED POLYCARBONATE DOORS WITH FULL LENGTH HANDLES  
 CENTER SQUEEZE LATCHES  
 TOTAL CABINET WEIGHT RATING = 60 lbs. EACH

CABINETS TO BE ALUMINUM

THIS DRAWING IS FOR REPRESENTATIONAL PURPOSES ONLY. DETAILS ARE CONCEPTUAL AND ARE SUBJECT TO CHANGE DURING DESIGN AND CONSTRUCTION  
 DIMENSIONS ARE APPROXIMATE UNLESS NOTED OTHERWISE TO MEET A SPECIFIC CUSTOMER NEED.

BRAUN  
EXPRESS



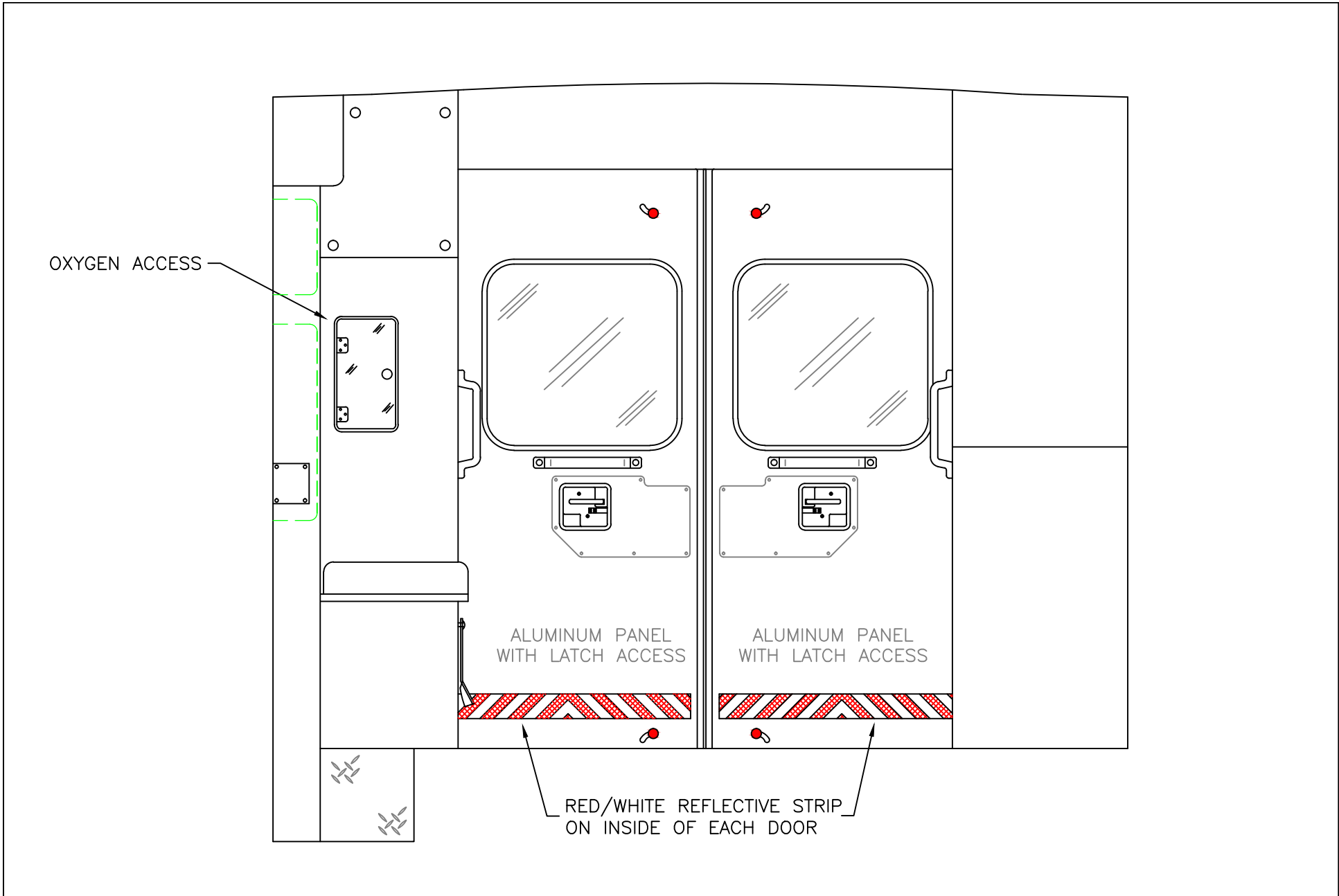
2019 PARTITION INTERIOR VIEW  
EXPRESS-III

DATE:  
8-3-18

DWG. AAB REV. NR

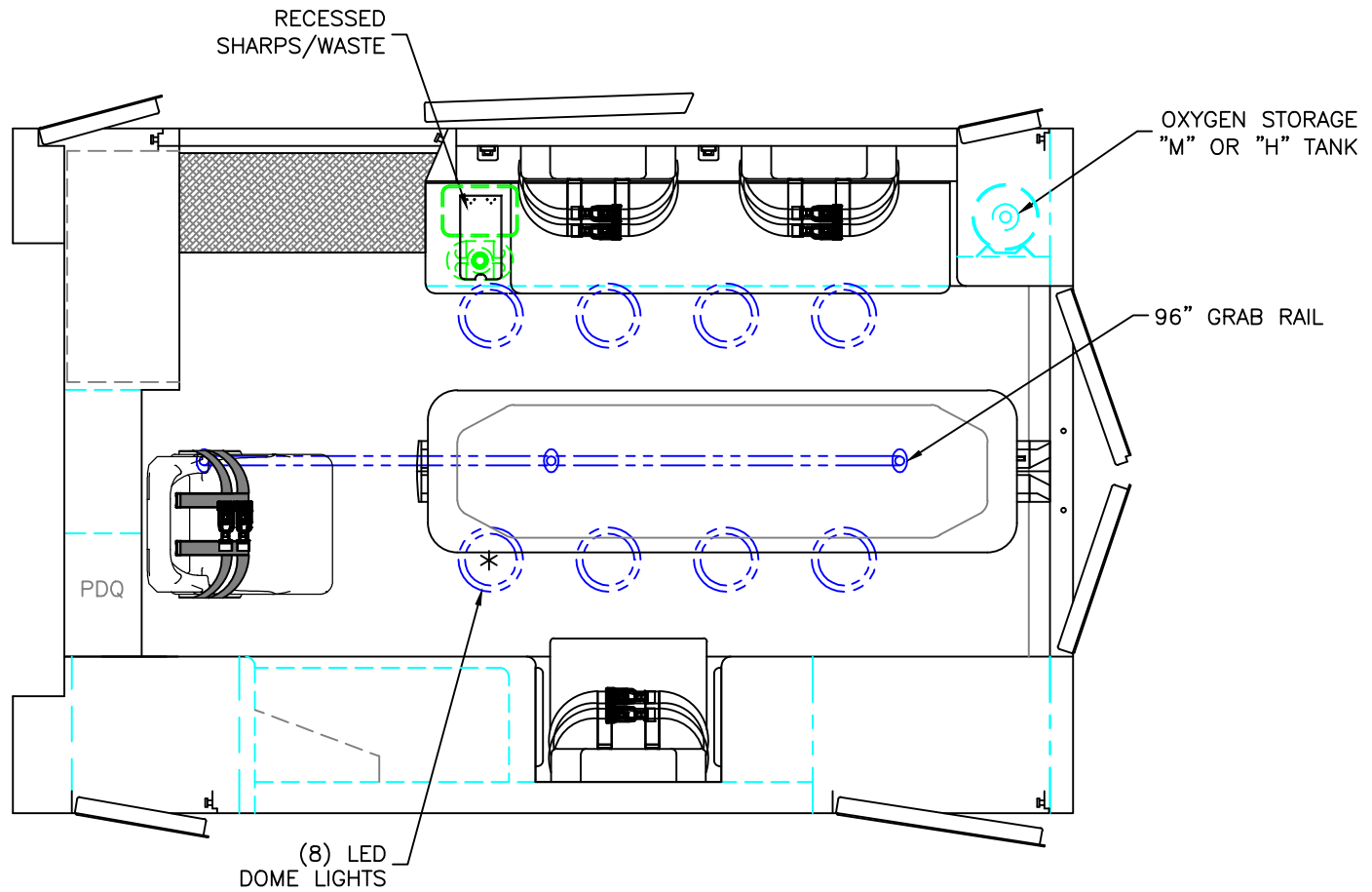
DRAWING NO.

EXPRESS-7



THIS DRAWING IS FOR REPRESENTATIONAL PURPOSES ONLY. DETAILS ARE CONCEPTUAL AND ARE SUBJECT TO CHANGE DURING DESIGN AND CONSTRUCTION DIMENSIONS ARE APPROXIMATE UNLESS NOTED OTHERWISE TO MEET A SPECIFIC CUSTOMER NEED.





\* (1) ANTENNA BASE LOCATED OUTBOARD OF DOME LIGHT WITH COAX SERVICE LOOP

86" FERNO STAT-TRAC CENTER MOUNT COT HARDWARE

HEAD ROOM = 68"  
 OVERALL WIDTH WITH RUB  
 RAILS & FENDERETTES = 95"  
 MODULE LENGTH = 144"

THIS DRAWING IS FOR REPRESENTATIONAL PURPOSES ONLY. DETAILS ARE CONCEPTUAL AND ARE SUBJECT TO CHANGE DURING DESIGN AND CONSTRUCTION  
 DIMENSIONS ARE APPROXIMATE UNLESS NOTED OTHERWISE TO MEET A SPECIFIC CUSTOMER NEED.

BRAUN  
 EXPRESS



2019 FLOOR VIEW  
 EXPRESS-III

DATE:	8-3-18
DWG.	REV.
AAB	NR

DRAWING NO.	EXPRESS-9
-------------	-----------